

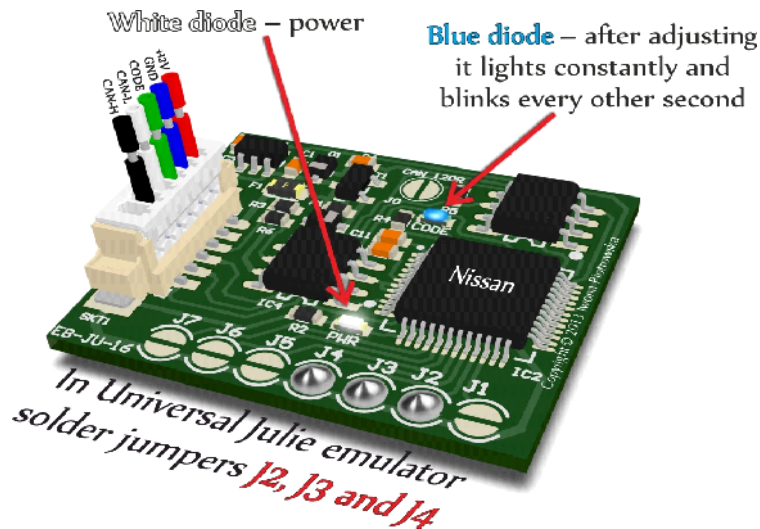


EDILOCK Group Ltd.

www.edilock-bg.com

www.vag-info.com

NISSAN



IMMO EMULATOR

SOLD AS UNIVERSAL *JULIE* EMULATOR

Use

ECU from 2000 to 2002 - NATS 4 and 5 immo

2.2 2.7 diesel 5-socket ECU with 24C04 memory

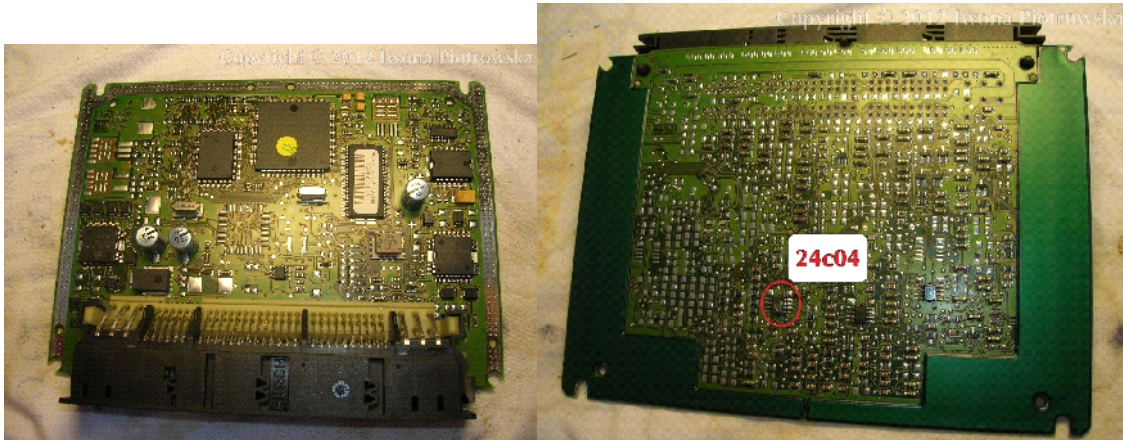
1.5 gasoline Hitachi MEC with 93C46 and 93C56 memory

1.8 and 2.0 gasoline Hitachi MEC with 93C56 memory

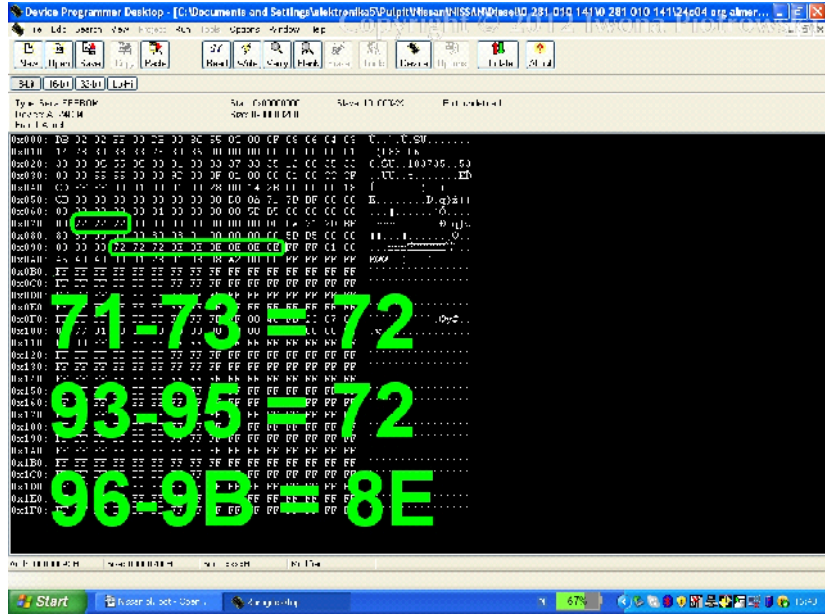
1.4 gasoline Bosch with 24LC02 memory

Models: Almera, Almera Tino, Micra, Primera, Terrano

2.2 diesel 5-socket ECU with 24C04 memory

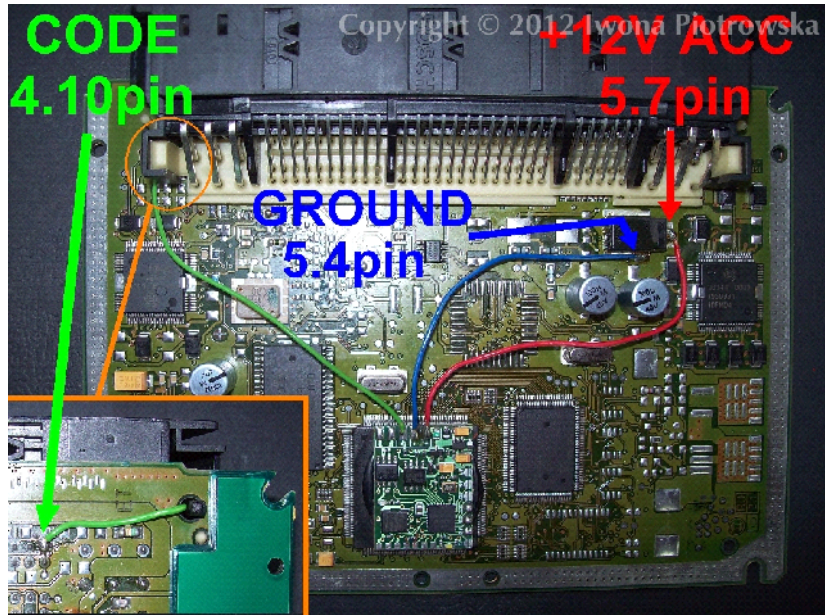


Find 24C04 eeprom memory



In addresses
 from 071 to 073 write 72 value
 from 093 to 095 write 72 value
 from 096 to 09B write 8E value

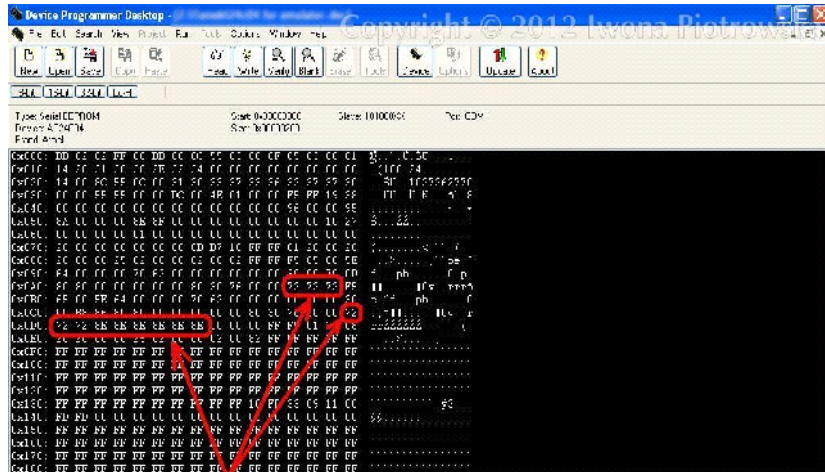
Connecting emulator to ECU



GND – 5.4 pin
 +12V ACC – 5.7 pin
 CODE – 4.10 pin

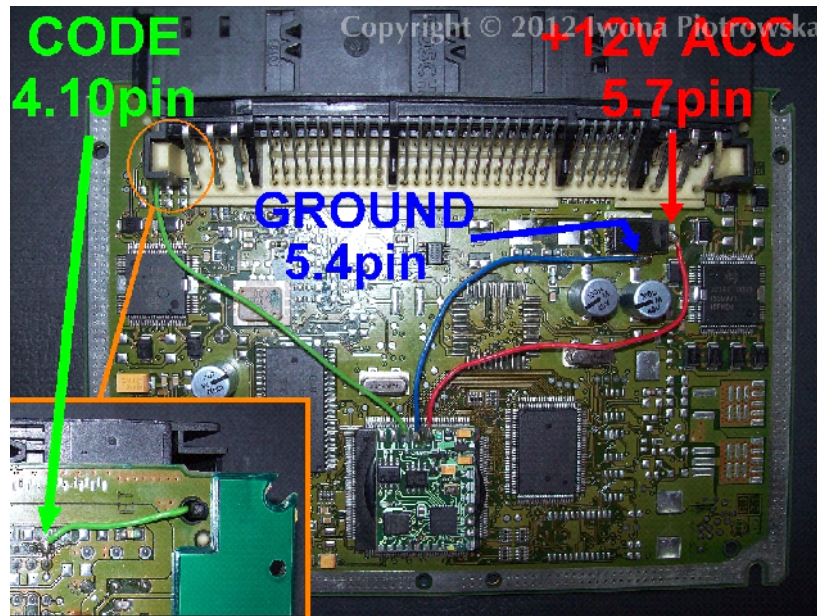
Before connecting the emulator, it must be precisely insulated with insulation tape

2.7 diesel 5-socket ECU with 24C04 memory



In addresses from 0AC to AE write 72 values

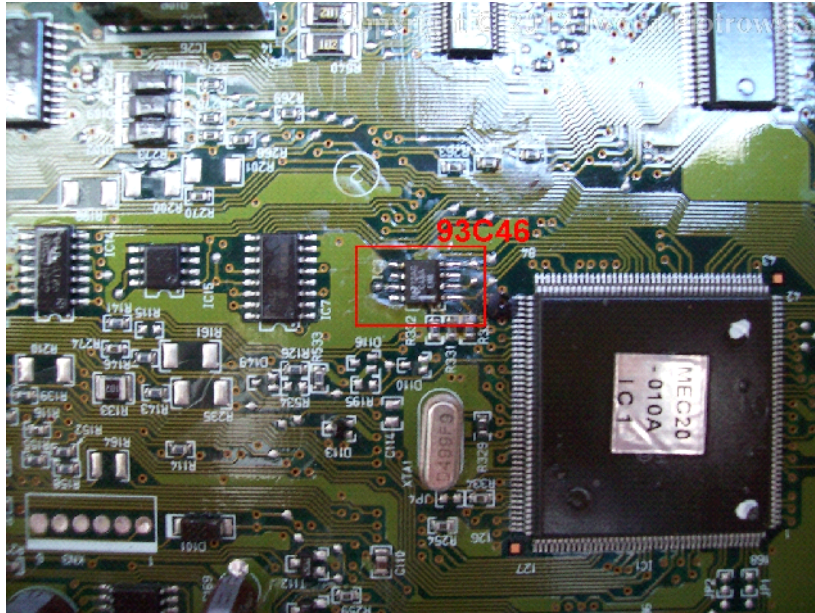
in 0CF write 72 value
from 0D0 to 0D7 write 72 72 8E 8E 8E 8E 8E 8E values
Connecting emulator to ECU



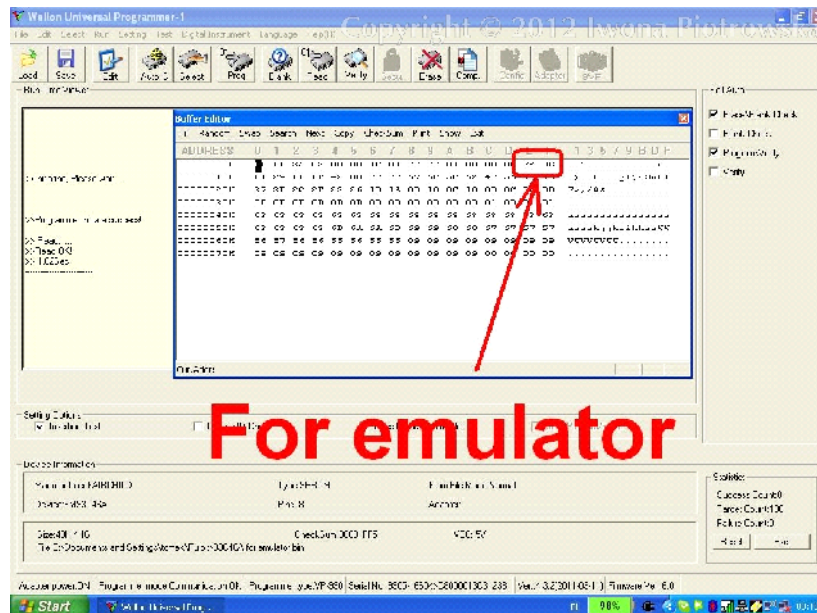
GND – 5.4 pin
+12V ACC – 5.7 pin
CODE – 4.10 pin

Before connecting the emulator, it must be precisely insulated with insulation tape

1.5 gasoline Hitachi MEC with 93C46 memory

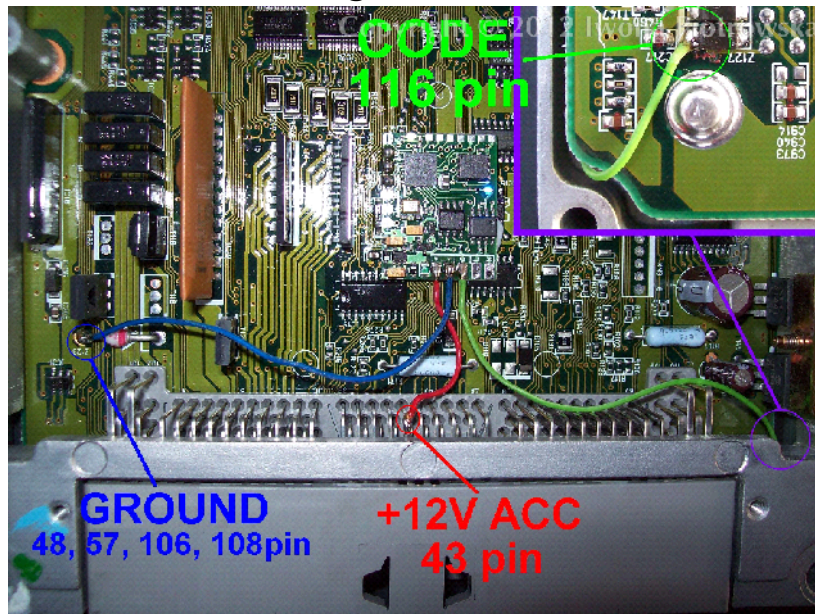


Find 93C46 eeprom memory



In address from 00E to 00F write 72 8E or 8E 72 values

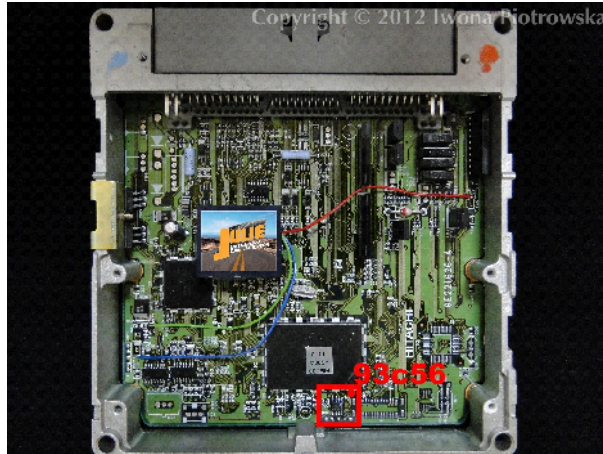
Connecting emulator to ECU



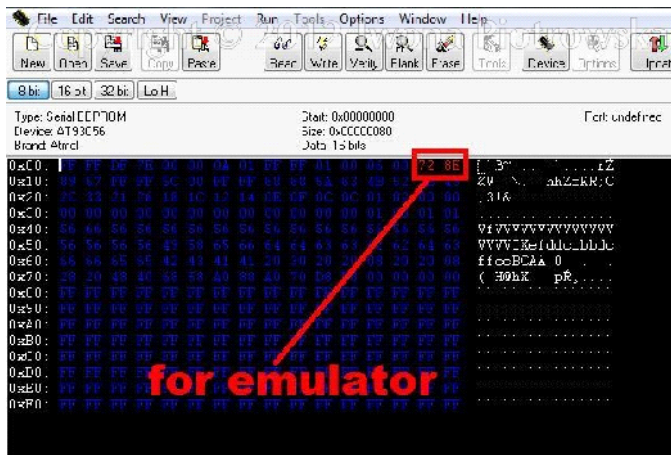
GND – 108 pin
+12V ACC – 43 pin
CODE – 116 pin
(cut it off from the plug in ECU)

Before connecting the emulator, it must be precisely insulated with insulation tape

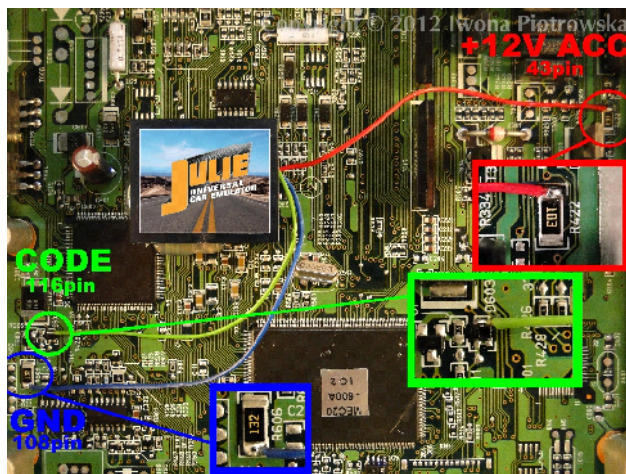
1.5 1.8 2.0 gasoline Hitachi MEC with 93C56 memory



Find 93C56 eeprom memory



In address
from 00E to 00F write 72 8E or 8E 72 values
Connecting emulator to ECU



GND – 108 pin
+12V ACC – 43 pin
CODE – 116 pin

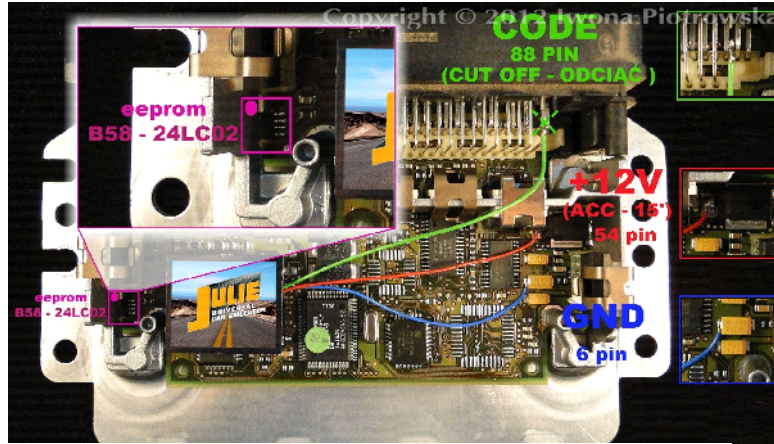
(cut it off from the plug in ECU)

Before connecting the emulator, it must be precisely insulated with insulation tape

1.4 gasoline Bosch ECU with 24LC02 memory



Find B58253 eeprom memory - read as 24C02



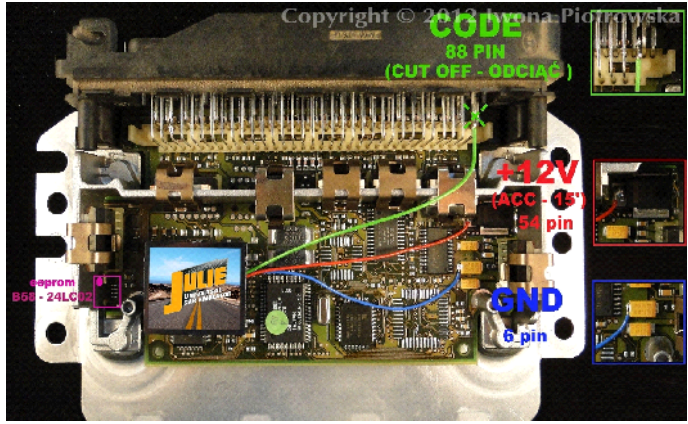
```

File Edit Search View Project Run Tools Options Window Help
New Open Save Copy Paste Read Write Verify Erase Tools Device Options Update About
8bit 16bit 32bit LoHi
Type: Serial EEPROM
Device: AT24C02
Brand: Atmel
Start: 00000000
Size: 0x0000100
Slave: 11111111
Part: undetected
Cx:00: 01 03 06 00 E1 BF 72 8E 08 01 05 00 00 00 00 CC .....a?z.....
Cx:10: 55 55 55 55 55 55 55 55 55 55 55 55 55 55 55 55 FA UUUUUUUUUUUUUUUUUUUUU
Cx:20: AA AA AA AA AA AA AA AA AA AA AA AA AA AA AA AA $$$$$$$$$$$$$$$$$
Cx:30: 55 55 55 55 55 55 55 55 55 55 55 55 55 55 55 55 UUUUUUUUUUUUUUUUUUUUU
Cx:40: AA AA AA AA AA AA AA AA AA AA AA AA AA AA AA AA $$$$$$$$$$$$$$$$$
Cx:50: 55 55 55 55 55 55 55 55 55 55 55 55 55 55 55 55 UUUUUUUUUUUUUUUUUUUUU
Cx:60: AA AA AA AA AA AA AA AA AA AA AA AA AA AA AA AA $$$$$$$$$$$$$$$$$
Cx:70: 55 55 55 55 55 55 55 55 55 55 55 55 55 55 55 55 UUUUUUUUUUUUUUUUUUUUU
Cx:80: AA AA AA AA AA AA AA AA AA AA AA AA AA AA AA AA $$$$$$$$$$$$$$$$$
Cx:90: 55 55 55 55 55 55 55 55 55 55 55 55 55 55 55 55 UUUUUUUUUUUUUUUUUUUUU
Cx:A0: AA AA AA AA AA AA AA AA AA AA AA AA AA AA AA AA $$$$$$$$$$$$$$$$$
Cx:B0: 55 55 55 55 55 55 55 55 55 55 55 55 55 55 55 55 UUUUUUUUUUUUUUUUUUUUU
Cx:C0: AA AA AA AA AA AA AA AA AA AA AA AA AA AA AA AA $$$$$$$$$$$$$$$$$
Cx:D0: 55 55 55 55 55 55 55 55 55 55 55 55 55 55 55 55 UUUUUUUUUUUUUUUUUUUUU
Cx:E0: AA AA AA AA AA AA AA AA AA AA AA AA AA AA AA AA $$$$$$$$$$$$$$$$$
Cx:F0: 55 55 55 55 55 55 55 55 55 55 55 55 55 55 55 55 UUUUUUUUUUUUUUUUUUUUU
For emulator
06 - 07 = 72 8E
NISSAN MICRA K11
1999-2002

```

in address
from 06 to 07 write 72 8E values

Connecting emulator to ECU



GND – 6 pin
10

+12V ACC – 54 pin
CODE – 88 pin
(cut it off from the plug in ECU)

BLAUPUNKT 9345 radio with 25160 memory

Upload memory content (available [HERE](#)) and connect up the radio, wait out the countdown of 50 seconds. Then when CODE shows up please enter code 8361 and confirm with UP ARROW button

Important!

When you enter incorrect code, it will cause the radio lock to turn on for 50 minutes



CLARION PN-1628M radio with f93C46 memory

Upload memory content (available [HERE](#)) and connect up the radio, wait out the countdown of 50 seconds. Then when CODE shows up please enter code 1111 and confirm with UP ARROW button.



Warning!!!

Due to possible construction changes of cars, check signals with multimeter in the ECU plug.

We state that we are the only authentic authors of this manual. We possess copyright of this publication. All rights reserved. Unauthorized copying, hiring, lending, public performance will be punished!!! Any trials of unauthorized copying, hiring, quoting prohibited!!! Both service and advertisement constitute copyright and they are the subject to the protection in accordance with the Act from 4th Feb. 1994 on Copyright and Related Laws (Statute Book no. 24 position 93) and protection on the basis of the Act from 8th June 1993 on combating an unfair competition (Statute Book no. 47 position 211)

www.edilock-bg.com

www.vag-info.com