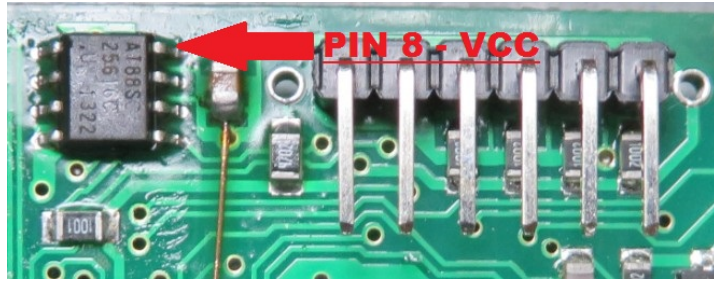


# CARPROG USB PROGRAMMING

## PRECAUTIONS:

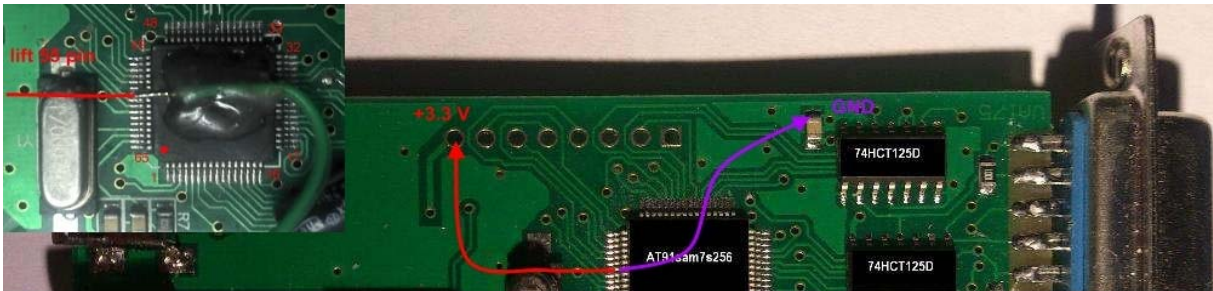
I am not responsible if you do not do this point and your AT88SC chip is erased. **YOU HAVE BEEN WARNED.**

0. Unsolder or lift up pin 8 of your AT88SC crypto memory



## PROCEDURE FOR PROGRAMMING:

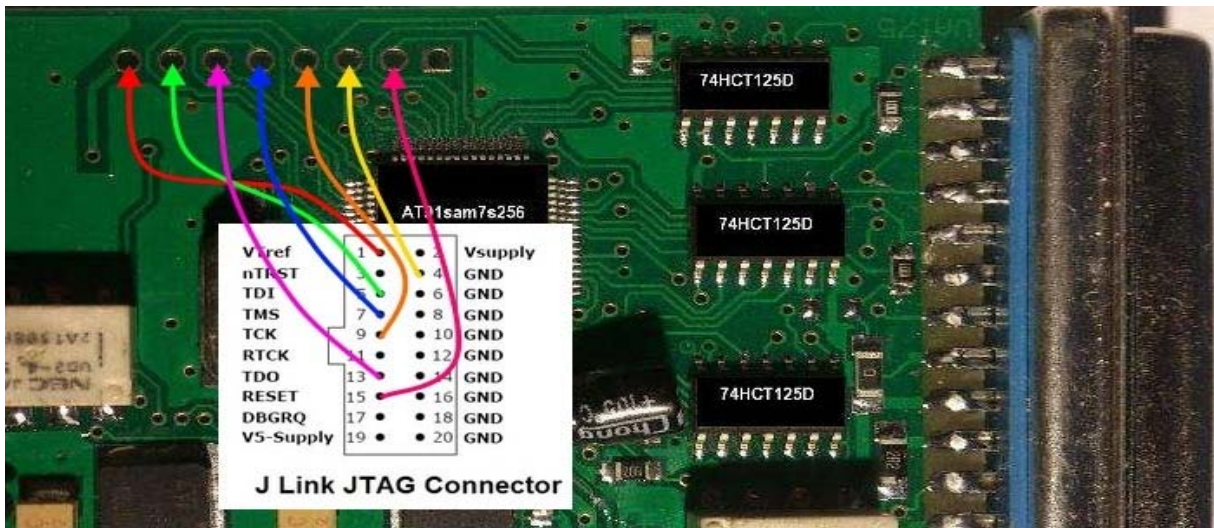
1. Erase your current firmware:



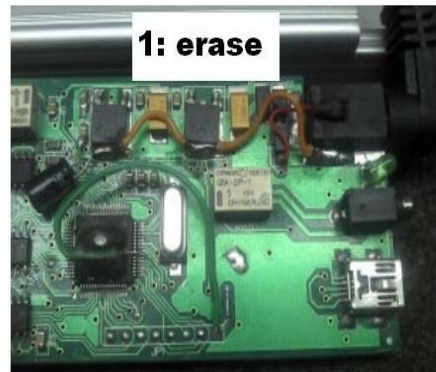
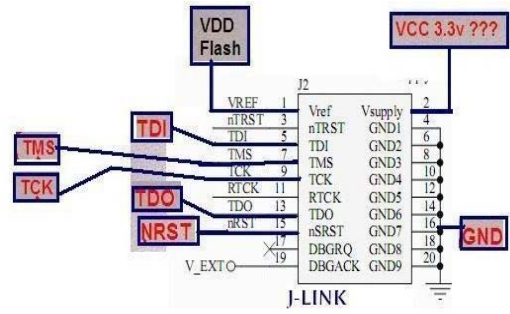
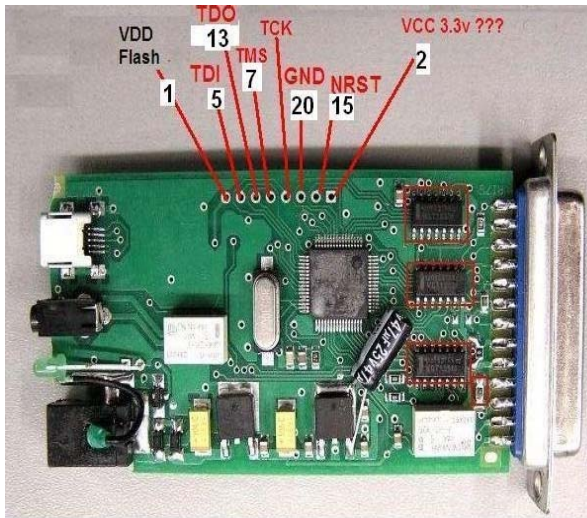
- Step 1: Lift 55 pin MCU AT91SAM7S256
- Step 2: Connect 55 pin MCU AT91SAM7S256 to +3.3 V
- Step 3: Connect power Carprog->USB->PC
- Step 4: Wait 10-15 seconds
- Step 5: Turn off the power of the board
- Step 6: Connect 55 pin to GND

2. Connect carprog to j-link programmer:

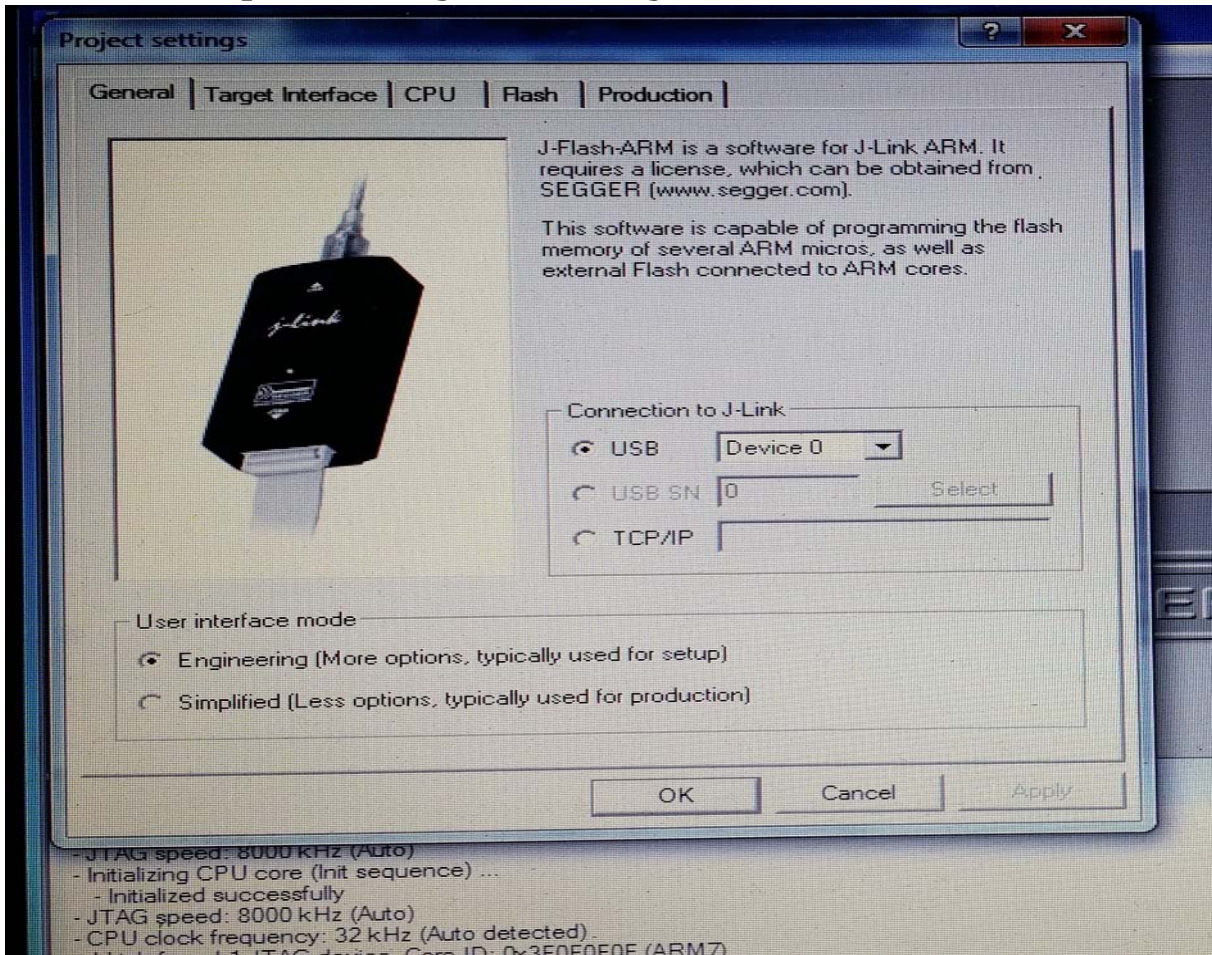
- a) with external power



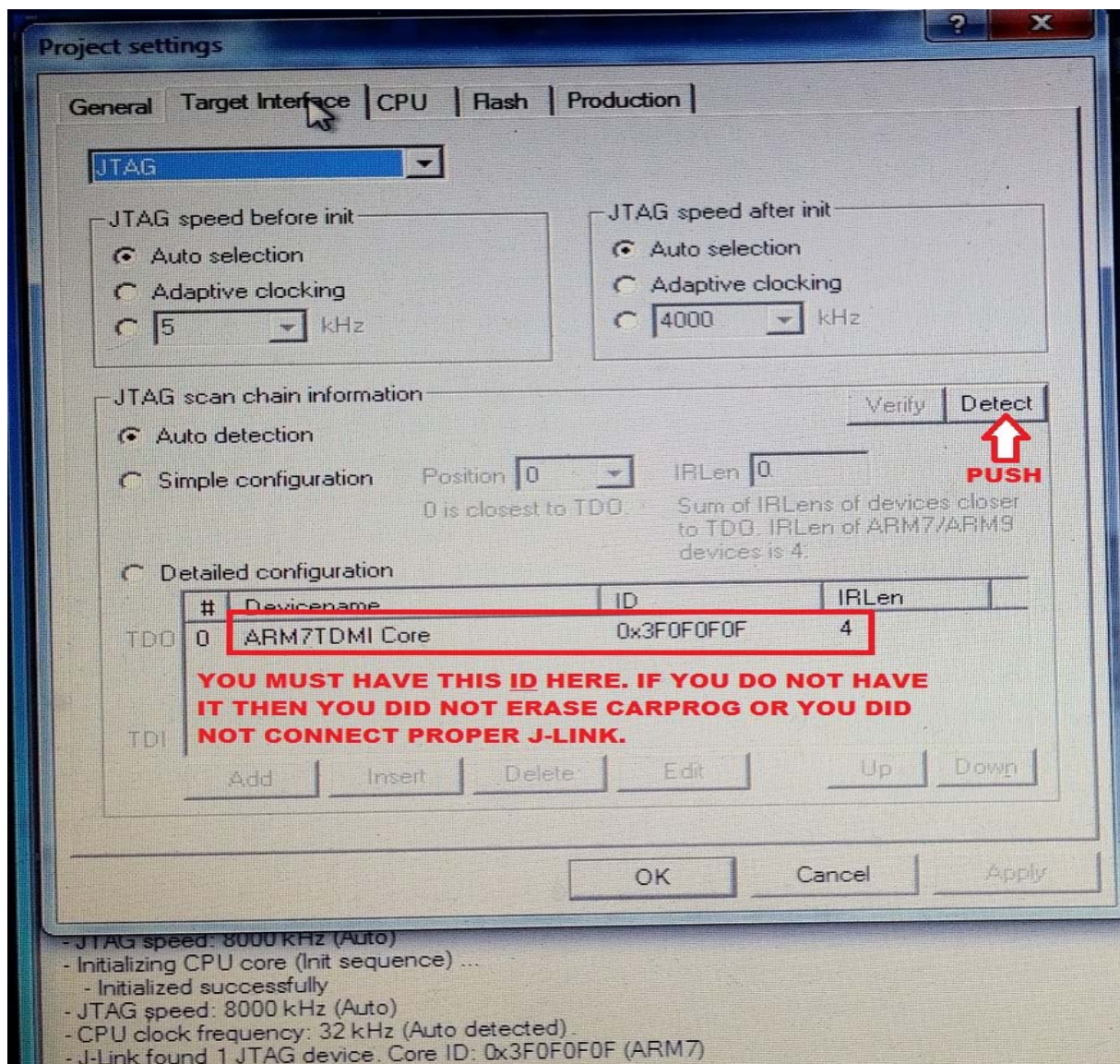
b) without external power - power from j-link



3. Connect J-Link to computer and open J-FLASH
4. Choose NEW Project
5. Go to Options-Project Settings (ALT+F7)



6. Target Interface - choose JTAG and push Detect



7. If you see there id **ARM7TDMI Core 0x3F0F0F0F** then you did all ok, carprog is erased and ready to be programmed.

8. Push OK and close program.

9. Open [usbclient.exe](#) and contact me for further instructions.

10. Only when all programming is done you can reconnect your at88 chip back to board after you disconnected device from all