

DASHBOARD PHOTO:



REQUIRED CABLE(s): C4



FOLLOW THIS INSTRUCTION STEP BY STEP:

1. Remove the dashboard and open it carefully.
2. Locate the Eeprom memory.
3. Look at photo below to find correct position of Pin1.
4. Connect the Eeprom memory using C4 cable.
5. Make sure that you connected the C4 clip correctly.
6. Press the READ EEP button and save Eeprom memory backup data.
7. Press the READ KM button and check if the value shown on the screen is correct. If not try to increase voltage using slider.
8. Now you can use the CHANGE KM function.

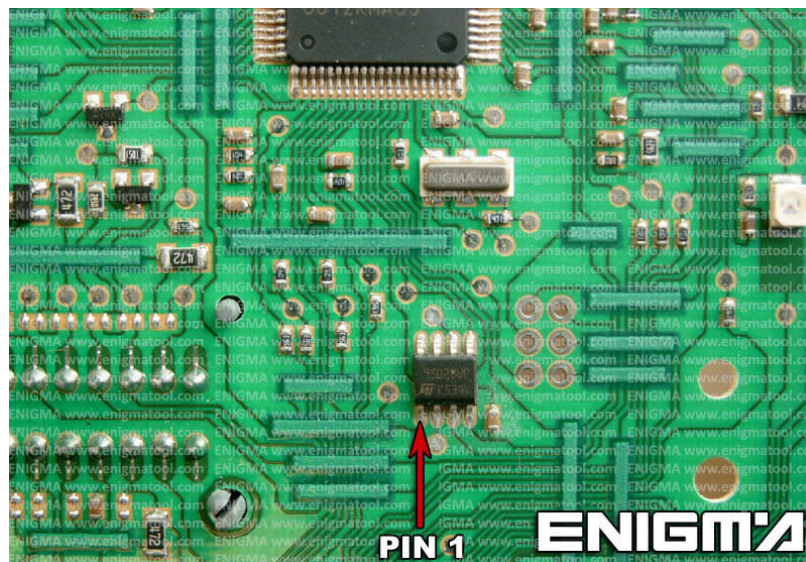


PHOTO 1: Connect cable C4 to the Eeprom memory according to the picture above.

FOR MORE INFORMATION

Call **0034 983 359 787** or visit www.enigmatool.com

DIAGCARELECTRONICS S.L. Ebanistería 1A, 47610 Zaratán, Spain

LEGAL DISCLAIMER:

DIAGCAR ELECTRONICS S.L. does not take any legal responsibility of illegal use of any information stored in this document. Copying, distributing or taking any action in reliance with the content of this information is strictly prohibited.

FOR MORE INFORMATION

Call **0034 983 359 787** or visit **www.enigmatool.com**

DIAGCAR ELECTRONICS S.L. Ebanistería 1A, 47610 Zaratán, Spain

