

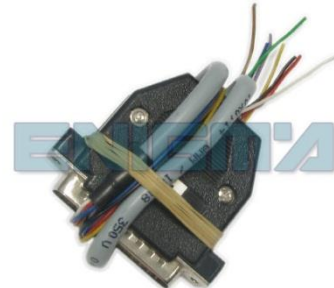
ENIGMA USER MANUAL

ALFA ROMEO 156 TO 2002 HC11

DASHBOARD PHOTO:



REQUIRED CABLE(S): C11



FOLLOW THIS INSTRUCTION STEP BY STEP:

1. Remove the dashboard and open it carefully.
2. Remove the back side of the dash to get to the main board.
3. First solder cables as shown on PHOTO 1.
Make sure that the connection you made is secure.
4. Before changing anything use EDITOR to read and save memory backup data from the dash.
5. Press the READ KM button and check if the value shown on the screen is correct.
6. Now you can use the CHANGE KM function.

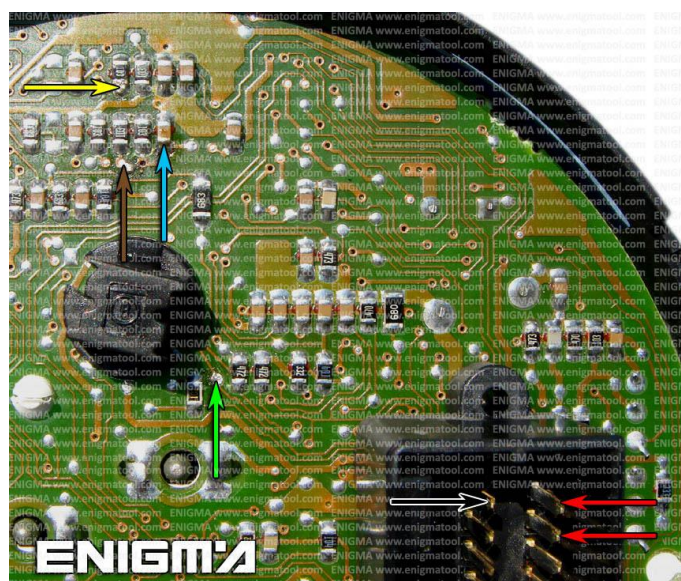


PHOTO 1: Solder cables according to the colors shown on the picture above.

FOR MORE INFORMATION

Call **0034 983 359 787** or visit www.enigmatool.com

DIAGCARELECTRONICS S.L. Ebanistería 1A, 47610 Zaratán, Spain


Diagcar Electronics S.L.

ENIGMA USER MANUAL
ALFA ROMEO 156 TO 2002 HC11

LEGAL DISCLAIMER:

DIAGCAR ELECTRONICS S.L. does not take any legal responsibility of illegal use of any information stored in this document. Copying, distributing or taking any action in reliance with the content of this information is strictly prohibited.

FOR MORE INFORMATION

Call **0034 983 359 787** or visit **www.enigmatool.com**

DIAGCAR ELECTRONICS S.L. Ebanistería 1A, 47610 Zaratán, Spain

