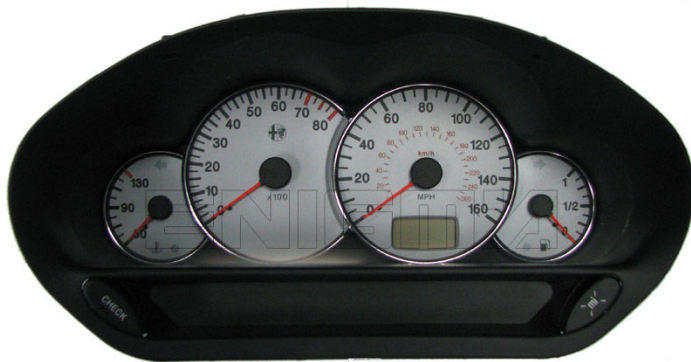


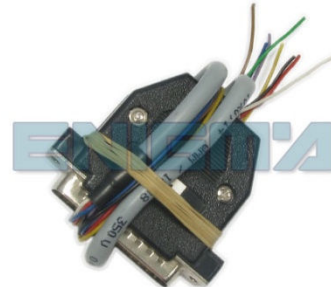
ENIGMA USER MANUAL

ALFA ROMEO 166 TO 2002 HC11

DASHBOARD PHOTO:



REQUIRED CABLE(s): C11



FOLLOW THIS INSTRUCTION STEP BY STEP:

1. Remove the dashboard and open it carefully.
2. Remove the back side of the dash to get to the main board.
3. First solder cables as shown on PHOTO 1.
4. Make sure that the connection you made is secure.
5. Solder cables according to colors as shown on PHOTO 2.
6. Press the READ EEP button and save memory backup data.
7. Press the READ KM button and check if the value shown on the screen is correct.
8. Now you can use the CHANGE KM function.

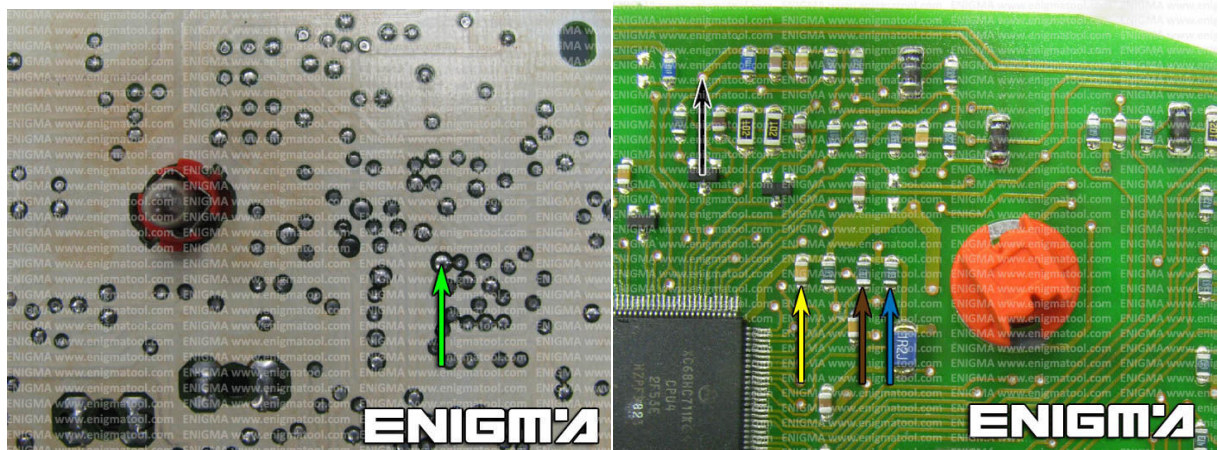


PHOTO 1: Solder cables according to the colors like shown on the photos above.

FOR MORE INFORMATION

Call **0034 983 359 787** or visit www.enigmatool.com

DIAGCARELECTRONICS S.L. Ebanistería 1A, 47610 Zaratán, Spain


Electronics
Diagcar S.L.

ENIGMA USER MANUAL

ALFA ROMEO 166 TO 2002 HC11

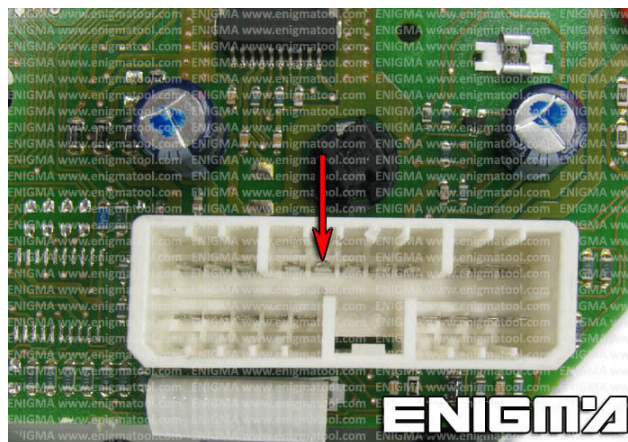


PHOTO 2: Solder cables according to the colors like shown on the photo above.

LEGAL DISCLAIMER:

DIAGCAR ELECTRONICS S.L. does not take any legal responsibility of illegal use of any information stored in this document. Copying, distributing or taking any action in reliance with the content of this information is strictly prohibited.

FOR MORE INFORMATION

Call **0034 983 359 787** or visit www.enigmatool.com

DIAGCAR ELECTRONICS S.L. Ebanistería 1A, 47610 Zaratán, Spain

