

# AUDI A3 FROM 07/2006

## DASHBOARD PHOTO:



## REQUIRED CABLE(S): C44 + A5 + C1



## FOLLOW THIS INSTRUCTION STEP BY STEP

1. Remove dashboard and open it completely. Separate boards from dashboard.
2. Connect power connector (blue 32 pin). Use [PHOTO 1](#).
3. Connect yellow wire from cable C44. Use [PHOTO 2](#).
4. Remove resistor marked on [PHOTO 2](#) and keep it to install it back later .
5. Lift up PIN from crystal resonator. Solder white wire from coaxial cable to pad on PCB where crystal pin was connected before. **Do not connect this cable to crystal resonator pin.** Use [PHOTO 3](#).
6. Solder red, green, black, white, blue wires from C44 cable. Use [PHOTO 3](#).
7. Now connect C44 cable to A5 adapter and connect A5 adapter to Enigma. **Do not connect C44 cable directly to Enigma!**
8. Please select in menu **AUDI->A3->xxxxx** and press button **START**.
9. Press **READ KEY** button and then **OK** button. If everything is connected correctly Enigma should read security access key from Micronas microprocessor and allow you to save this key into a file. Please save the file and remember the file name.
10. Unsolder all wires from PCB, install removed resistor and solder back lifted up pin from crystal resonator to PCB. Mount back dashboard and install it into the car.
11. Connect OBD2 cable to car and Enigma and start the same program again.
12. Press **READ KEY** button and then press **CANCEL** button. Enigma will ask you to open key file that you previously saved. Please open this saved file.
13. Now you can use functions: **READ KM, CHANGE KM, READ and WRITE EEP** as you need.

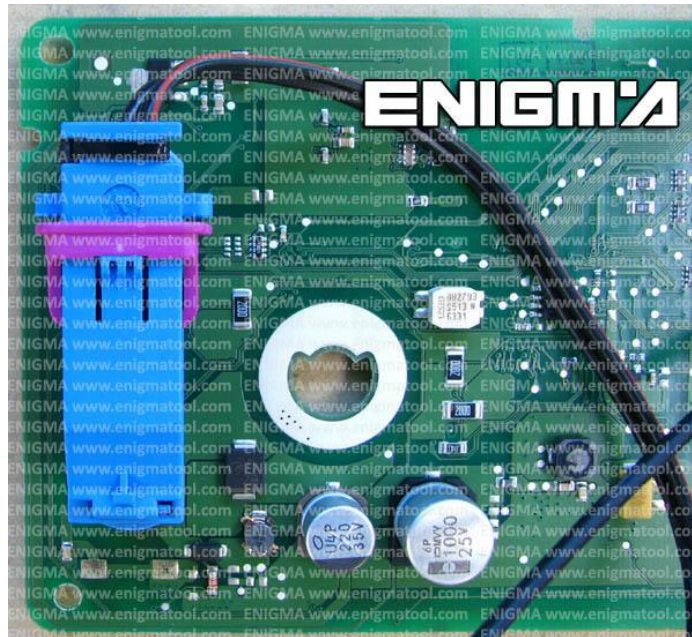
for more information

call **0034 983 359 787** or visit [www.enigmatool.com](http://www.enigmatool.com)

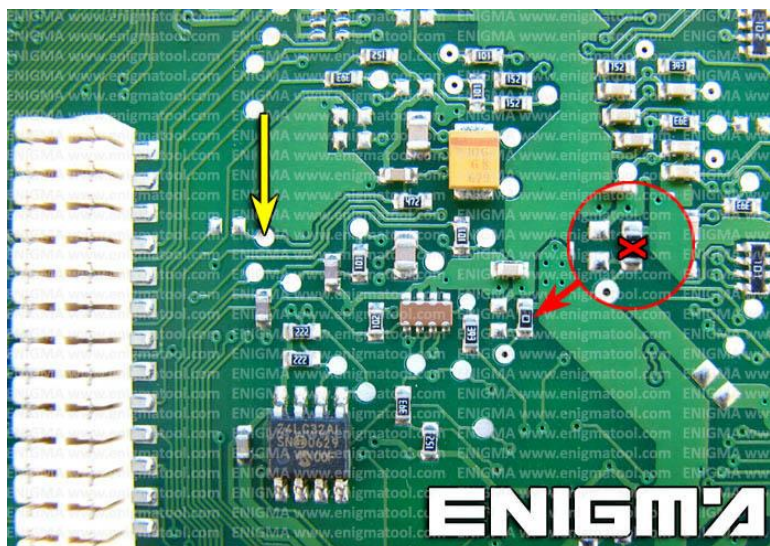
DIAGCAR ELECTRONICS S.L. C\ Ebanisteria 1A, 47610 Zaratan, Spain

# ENIGMA USER MANUAL

## AUDI A3 FROM 07/2006



**PHOTO 1: Connect blue power supply connector (32 pin) from C44.**



**PHOTO 2: Connect yellow wire from C44 and remove resistor marked on this photo.**

for more information

call **0034 983 359 787** or visit **[www.enigmatool.com](http://www.enigmatool.com)**

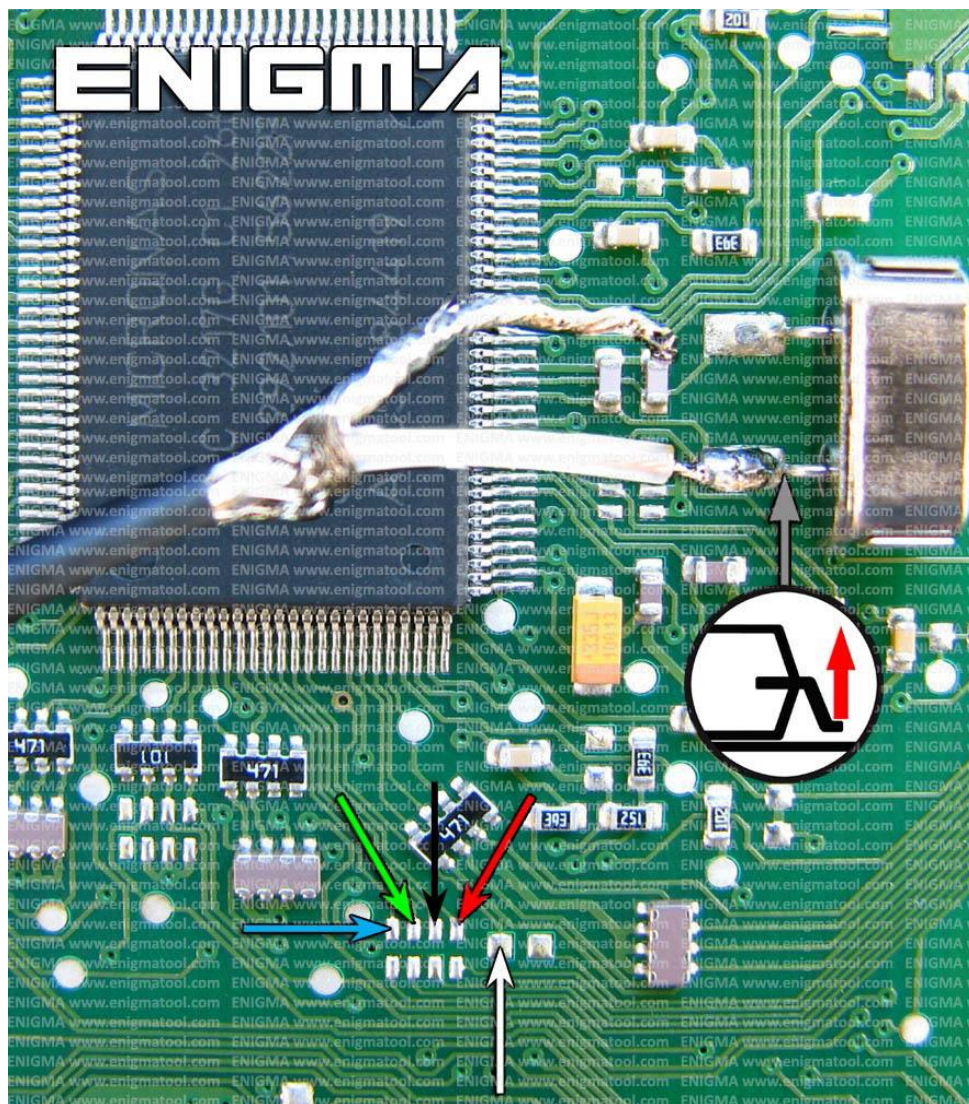
DIAGCAR ELECTRONICS S.L. C\ Ebanisteria 1A, 47610 Zaratan, Spain

  
**Diagcar** S.L.



# ENIGMA USER MANUAL

## AUDI A3 FROM 07/2006



**PHOTO 3:** Connect blue, white, green, black, red wire from C44, lift up marked pin from crystal resonator and solder coax cable like on photo above. **White wire from coax cable must be connected to PCB.**

### LEGAL DISCLAIMER:

**DIAGCAR ELECTRONICS S.L. does not take any legal responsibility of illegal use of any information stored in this document. Copying, distributing or taking any action in reliance with the content of this information is strictly prohibited.**

for more information

call **0034 983 359 787** or visit **[www.enigmatool.com](http://www.enigmatool.com)**

DIAGCAR ELECTRONICS S.L. C\ Ebanisteria 1A, 47610 Zaratan, Spain



**Diagcar** S.L.