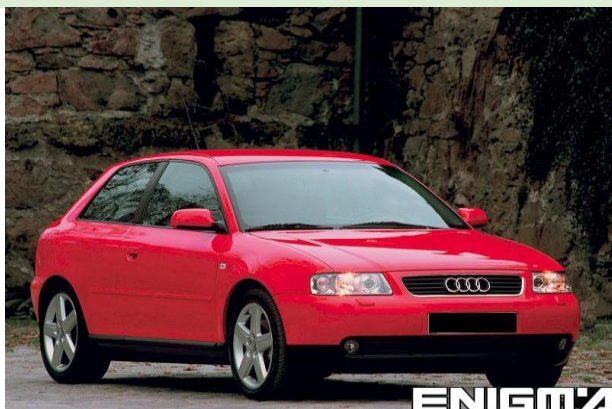


ENIGMA USER MANUAL
AUDI A3 TO 2003 OBD2

CAR PHOTO:



REQUIRED CABLE(s):
C1



FOLLOW THIS INSTRUCTION STEP BY STEP:

1. Locate the OBD2 connector.
2. Check the version and producer of the dash.
3. Select and run the correct program.



PHOTO 1: Connect cable C1 according to the picture above.

LEGAL DISCLAIMER:

DIAGCAR ELECTRONICS S.L. does not take any legal responsibility of illegal use of any information stored in this document. Copying, distributing or taking any action in reliance with the content of this information is strictly prohibited.

FOR MORE INFORMATION

Call **0034 983 359 787** or visit www.enigmatool.com

DIAGCARELECTRONICS S.L. Ebanistería 1A, 47610 Zaratán, Spain


Diagcar Electronics S.L.