

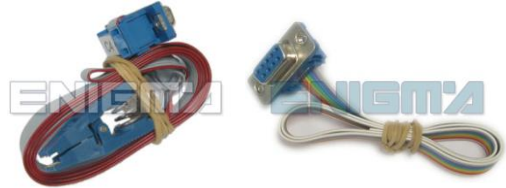
ENIGMA USER MANUAL

AUDI A4 FROM 2001

DASHBOARD PHOTO:



REQUIRED CABLE(S): C4 OR C7



FOLLOW THIS INSTRUCTION STEP BY STEP:

1. Remove the dashboard and open it carefully.
2. Remove the back side of the dash to get to the main board.
3. There are two ways to do this kind of car:
 - A) Solder cable C7 to the points on the back of the dash mainboard as shown on PHOTO1.
 - B) Remove back, front and nails of the dash and use cable C4 to clip the Eeprom memory as shown on PHOTO2.
4. Make sure that the connection you made is secure.
5. In case of C7 cable use EDITOR to save memory backup data.
6. In case of C4 cable READ EEP button and save memory backup data.
7. Press the READ KM button and check if the value shown on the screen is correct.
8. Now you can use the CHANGE KM function.

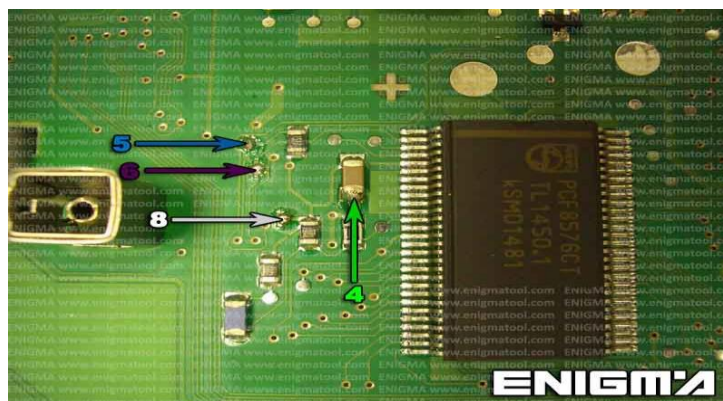


PHOTO 1: Solder cables according to the colors like shown on the photo above.

FOR MORE INFORMATION

Call **0034 983 359 787** or visit www.enigmatool.com

DIAGCARELECTRONICS S.L. Ebanistería 1A, 47610 Zaratán, Spain


Electronics
Diagcar S.L.

ENIGMA USER MANUAL

AUDI A4 FROM 2001

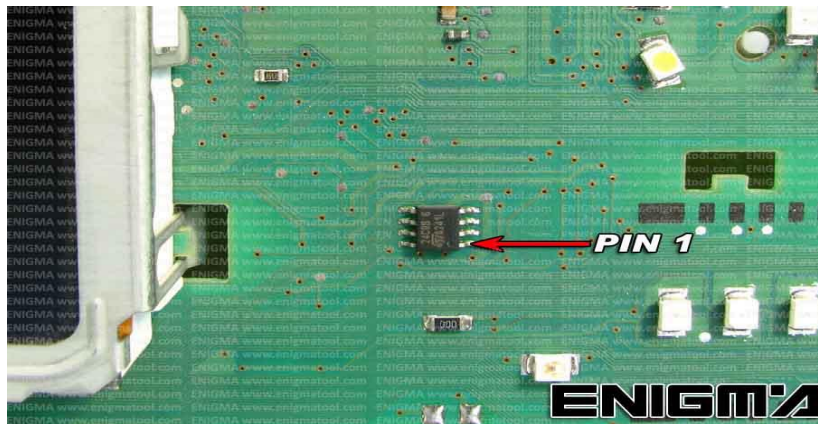


PHOTO 2: Use C4 cable to clip the Eeprom memory as shown on the photo above.

LEGAL DISCLAIMER:

DIAGCAR ELECTRONICS S.L. does not take any legal responsibility of illegal use of any information stored in this document. Copying, distributing or taking any action in reliance with the content of this information is strictly prohibited.

FOR MORE INFORMATION

Call **0034 983 359 787** or visit www.enigmatool.com

DIAGCAR ELECTRONICS S.L. Ebanistería 1A, 47610 Zaratán, Spain

