

ENIGMA USER MANUAL

BMW 7 SERIES E38 DASH SW13

DASHBOARD PHOTO:



REQUIRED CABLE(S): C7+ S. ERASER



FOLLOW THIS INSTRUCTION STEP BY STEP:

1. Remove the dashboard and open it carefully.
2. It might be necessary to use SUPER ERASER or EEPROM CHANGE.
3. Look at PHOTO 1 and solder C7 cables according to the colors shown on the photo.
4. Make sure that the connection you made is secure.
5. Press the READ EEP button or use EDITOR to save memory backup data.
6. Press the READ KM button and check if the value shown on the screen is correct.
7. Now you can use the CHANGE KM function.

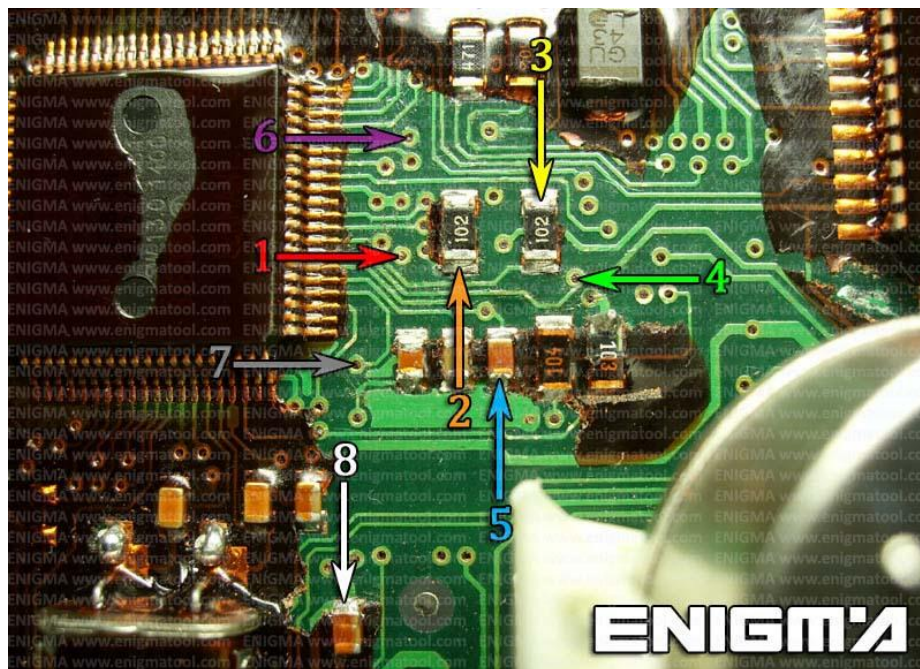


PHOTO 1: Solder C7 cables according to the picture above.

FOR MORE INFORMATION

Call **0034 983 359 787** or visit www.enigmatool.com

DIAGCARELECTRONICS S.L. Ebanistería 1A, 47610 Zaratán, Spain


Electronics
Diagcar S.L.

ENIGMA USER MANUAL
BMW 7 SERIES E38 DASH SW13

LEGAL DISCLAIMER:

DIAGCAR ELECTRONICS S.L. does not take any legal responsibility of illegal use of any information stored in this document. Copying, distributing or taking any action in reliance with the content of this information is strictly prohibited.

FOR MORE INFORMATION

Call **0034 983 359 787** or visit **www.enigmatool.com**

DIAGCAR ELECTRONICS S.L. Ebanistería 1A, 47610 Zaratán, Spain

