

BMW 7 SERIES E65 CAS2 FROM 2006 V1

CAS 2 PHOTO:



REQUIRED CABLE(s): C45 + A6



FOLLOW THIS INSTRUCTION STEP BY STEP:

1. First locate CAS2 as shown on PHOTO 1.
2. Remove the module and open it carefully.
3. Solder C45 cables to modules mainboard as shown on PHOTO2.
- Remember to connect A6 adapter.**
4. Make sure that the connection you made is secure.
5. Press the READ KM button and check if the value shown on the screen is correct.
6. Use the EDITOR to save memory backup data.
7. Now you can use the CHANGE KM function.



PHOTO 1: Locate the CAS2 module in the car.

FOR MORE INFORMATION

Call **0034 983 359 787** or visit www.enigmatool.com

DIAGCARELECTRONICS S.L. Ebanistería 1A, 47610 Zaratán, Spain

BMW 7 SERIES E65 CAS2 FROM 2006 V1

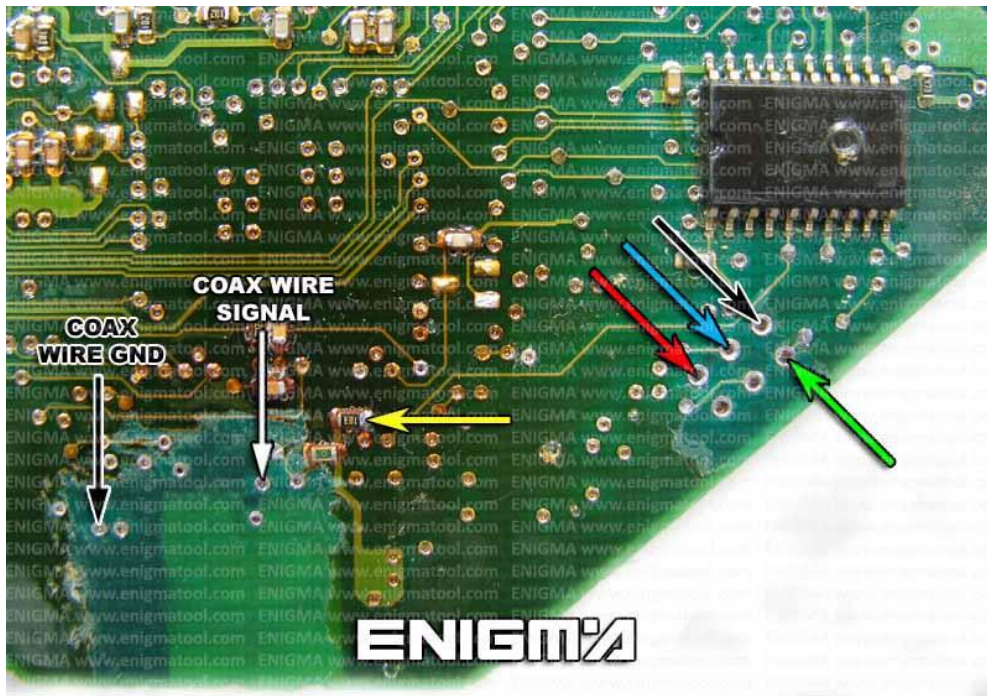


PHOTO 2: Solder C45 cables as shown on the photo above.

LEGAL DISCLAIMER:

DIAGCAR ELECTRONICS S.L. does not take any legal responsibility of illegal use of any information stored in this document. Copying, distributing or taking any action in reliance with the content of this information is strictly prohibited.

FOR MORE INFORMATION

Call **0034 983 359 787** or visit www.enigmatool.com

DIAGCARELECTRONICS S.L. Ebanistería 1A, 47610 Zaratán, Spain