

# ENIGMA USER MANUAL

## BMW EWS3 MASK 0D46J

### EWS PHOTO:

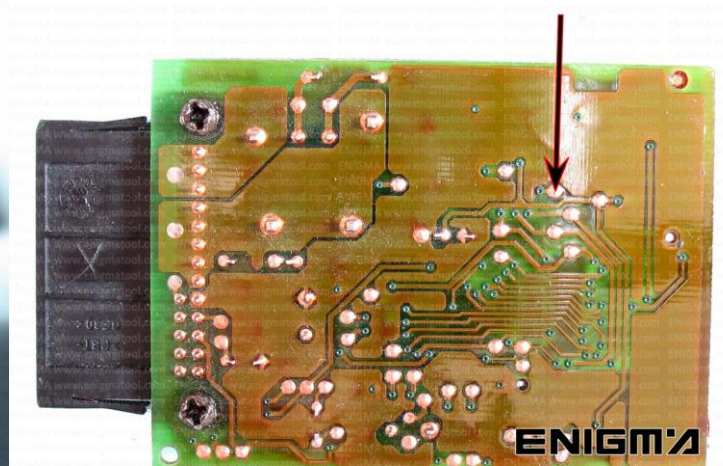
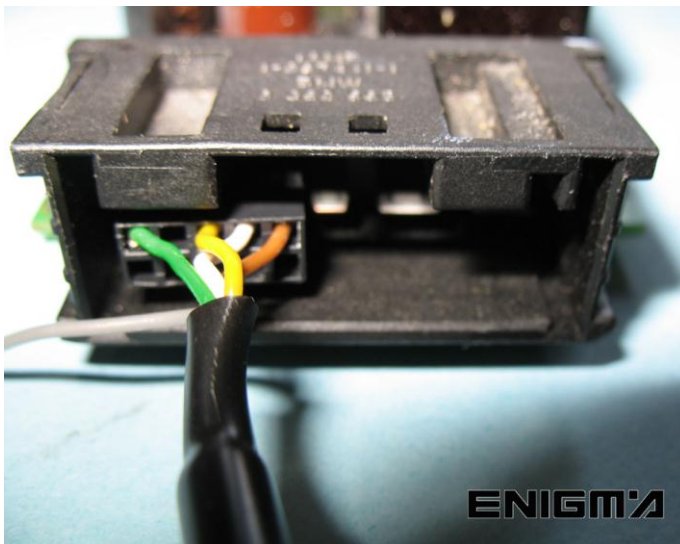


### REQUIRED CABLE(s): C18



### FOLLOW THIS INSTRUCTION STEP BY STEP:

1. Remove the EWS and open it carefully, **CHECK THE MASK.**
2. Look at PHOTO 1 and connect C18 cable according to the colors.
3. Solder one cable on the bottom part of PCB like shown on PHOTO1.
4. Make sure that the connection you made is secure.
5. Press the READ KM button and check if the value shown on the screen is correct.
6. Now you can use the CHANGE KM function to RESET EWS.



**PHOTO 1:** Solder and connect cable C18 according to the pictures above.

FOR MORE INFORMATION

Call **0034 983 359 787** or visit [www.enigmatool.com](http://www.enigmatool.com)

DIAGCARELECTRONICS S.L. Ebanistería 1A, 47610 Zaratán, Spain

  
**Diagcar** S.L.

ENIGMA USER MANUAL  
**BMW EWS3 MASK 0D46J**

**LEGAL DISCLAIMER:**

**DIAGCAR ELECTRONICS S.L. does not take any legal responsibility of illegal use of any information stored in this document. Copying, distributing or taking any action in reliance with the content of this information is strictly prohibited.**

FOR MORE INFORMATION

Call **0034 983 359 787** or visit **[www.enigmatool.com](http://www.enigmatool.com)**

DIAGCAR ELECTRONICS S.L. Ebanistería 1A, 47610 Zaratán, Spain

