

BMW X3 SERIES E83 LCM DIRECT 2007

LCM LOCATION PHOTO:



REQUIRED CABLE(s): C12



FOLLOW THIS INSTRUCTION STEP BY STEP:

1. Remove the LCM and open it carefully.
2. Look at PHOTO 1 and solder C12 cable according to the colors.
3. **Solder power leads first.**
4. Make sure that the connection you made is secure.
5. Use EDITOR to save memory backup data.
6. Press the READ KM button and check if the value shown on the screen is correct.
7. Now you can use the CHANGE KM function.

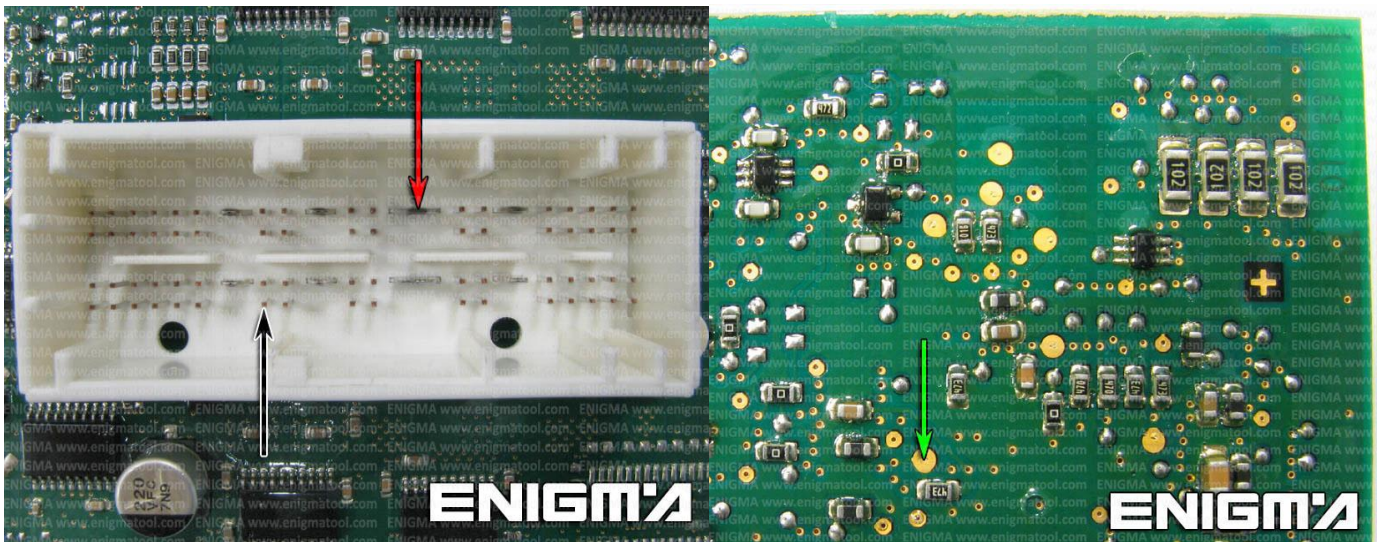


PHOTO 1: Solder cable C12 according to the pictures above.

FOR MORE INFORMATION

Call **0034 983 359 787** or visit www.enigmatool.com

DIAGCAR ELECTRONICS S.L. Ebanistería 1A, 47610 Zaratán, Spain

ENIGMA USER MANUAL

BMW X3 SERIES E83 LCM DIRECT 2007

LEGAL DISCLAIMER:

DIAGCAR ELECTRONICS S.L. does not take any legal responsibility of illegal use of any information stored in this document. Copying, distributing or taking any action in reliance with the content of this information is strictly prohibited.

FOR MORE INFORMATION

Call **0034 983 359 787** or visit **www.enigmatool.com**

DIAGCAR ELECTRONICS S.L. Ebanistería 1A, 47610 Zaratán, Spain

