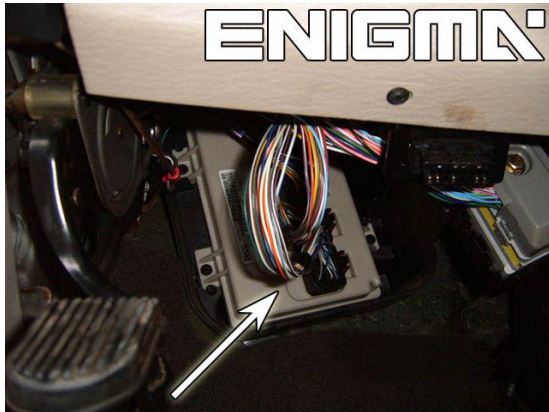


# ENIGMA USER MANUAL

## CHRYSLER PACIFICA BCM

### BCM AND LOCATION:

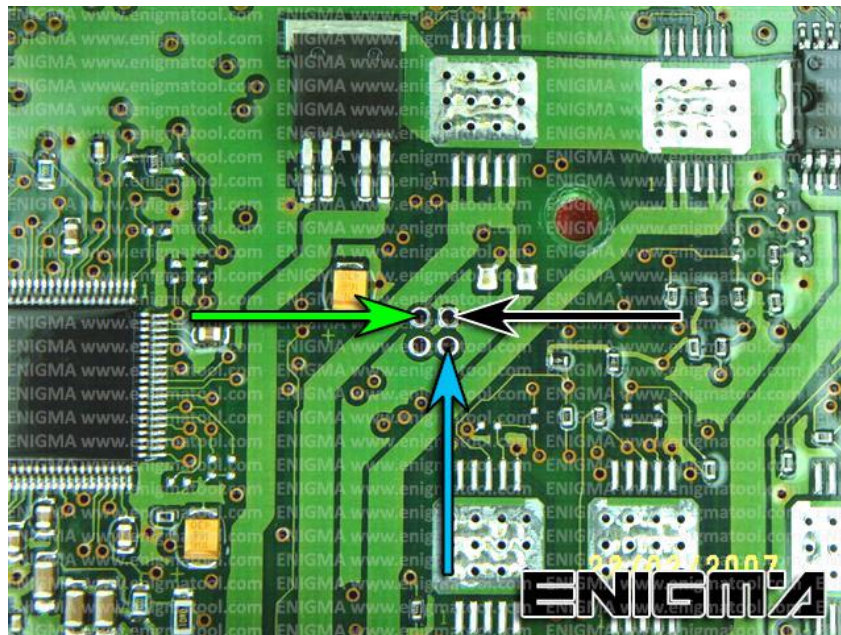


### REQUIRED CABLE(s): C12



### FOLLOW THIS INSTRUCTION STEP BY STEP:

1. **FIRST! DISCONNECT THE BATTERY!**
2. Remove the BCM module and open it carefully.
3. Look at PHOTO1 solder C12 cables according to colors.
4. Make sure that the connection you made is secure.
5. Use the EDITOR to save memory backup data.
6. Press the READ KM button and check if the value shown on the screen is correct.
7. Now you can use the CHANGE KM function.



**PHOTO 1: Solder cable C12 according to the picture above.**

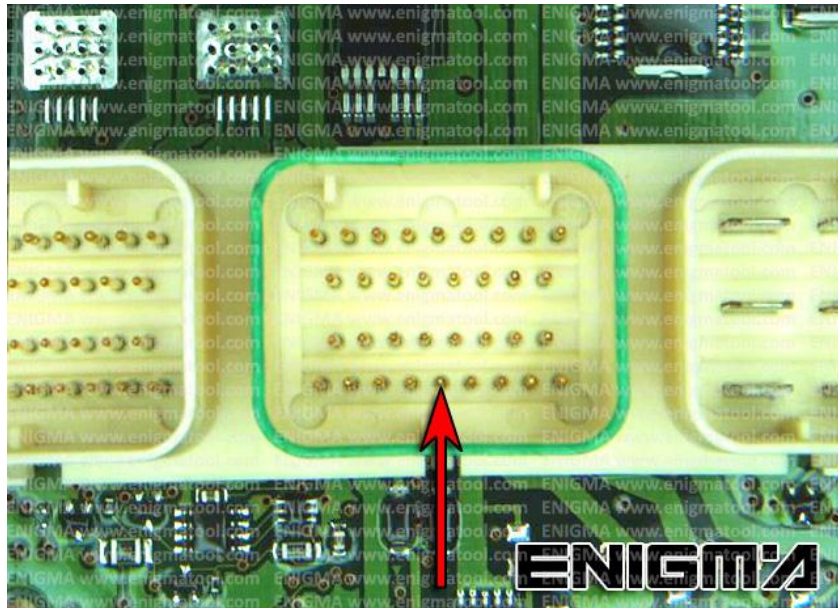
FOR MORE INFORMATION

Call **0034 983 359 787** or visit [www.enigmatool.com](http://www.enigmatool.com)

DIAGCARELECTRONICS S.L. Ebanistería 1A, 47610 Zaratán, Spain

# ENIGMA USER MANUAL

## CHRYSLER PACIFICA BCM



**PHOTO 2: Power lead connection.**

### **LEGAL DISCLAIMER:**

**DIAGCAR ELECTRONICS S.L. does not take any legal responsibility of illegal use of any information stored in this document. Copying, distributing or taking any action in reliance with the content of this information is strictly prohibited.**

FOR MORE INFORMATION

Call **0034 983 359 787** or visit [www.enigmatool.com](http://www.enigmatool.com)

DIAGCARELECTRONICS S.L. Ebanistería 1A, 47610 Zaratán, Spain

