

CITROEN C4 PICASSO DASH 93C66 V2

DASHBOARD PHOTO:



REQUIRED CABLE(s):

C4



FOLLOW THIS INSTRUCTION STEP BY STEP:

1. Remove the dashboard and open it carefully.
2. Locate the 93C66 EEPROM memory.
3. Look at PHOTO1 to find correct position of PIN1.
4. Connect the EEPROM memory using C4 cable.
5. Make sure that you connected the C4 clip correctly.
6. Press the READ EEP button and save EEPROM memory backup data.
7. Press the READ KM button and check if the value shown on the screen is correct.
8. Now you can use the CHANGE KM function.

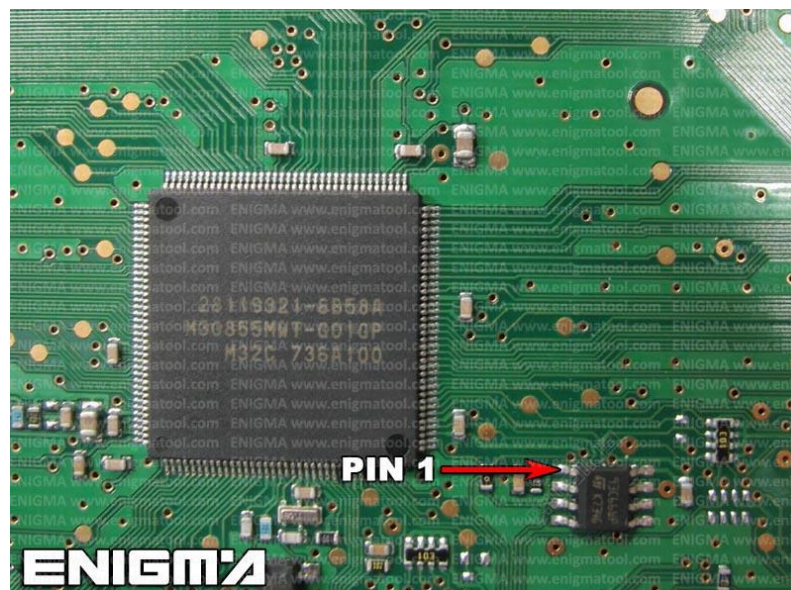


PHOTO 1: Connect cable C4 to the EEPROM memory according to the picture above.

FOR MORE INFORMATION

Call **0034 983 359 787** or visit www.enigmatool.com

DIAGCARELECTRONICS S.L. Ebanistería 1A, 47610 Zaratán, Spain

ENIGMA USER MANUAL

CITROEN C4 PICASSO DASH 93C66 V2

LEGAL DISCLAIMER:

DIAGCAR ELECTRONICS S.L. does not take any legal responsibility of illegal use of any information stored in this document. Copying, distributing or taking any action in reliance with the content of this information is strictly prohibited.

FOR MORE INFORMATION

Call **0034 983 359 787** or visit **www.enigmatool.com**

DIAGCAR ELECTRONICS S.L. Ebanistería 1A, 47610 Zaratán, Spain

