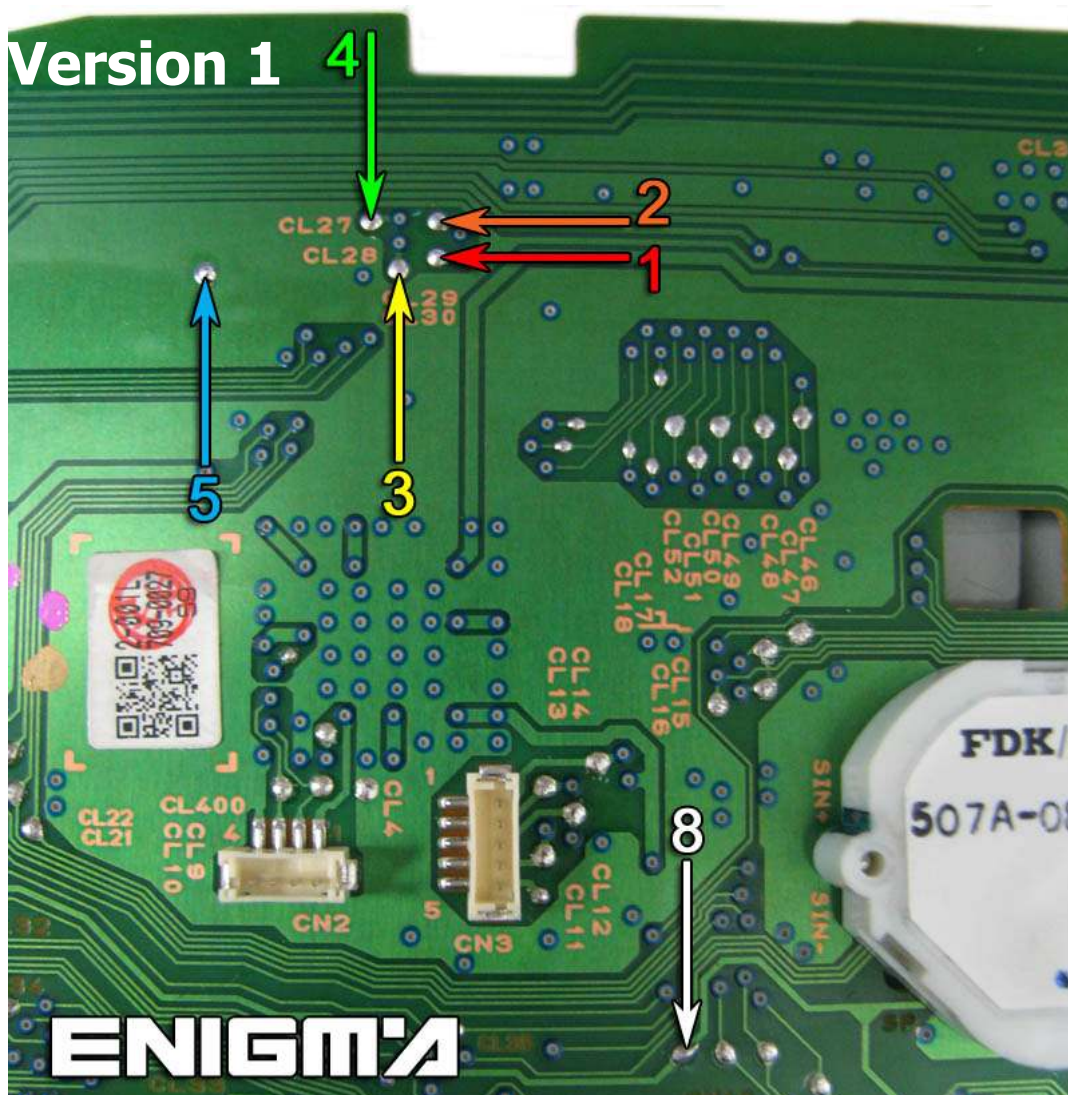


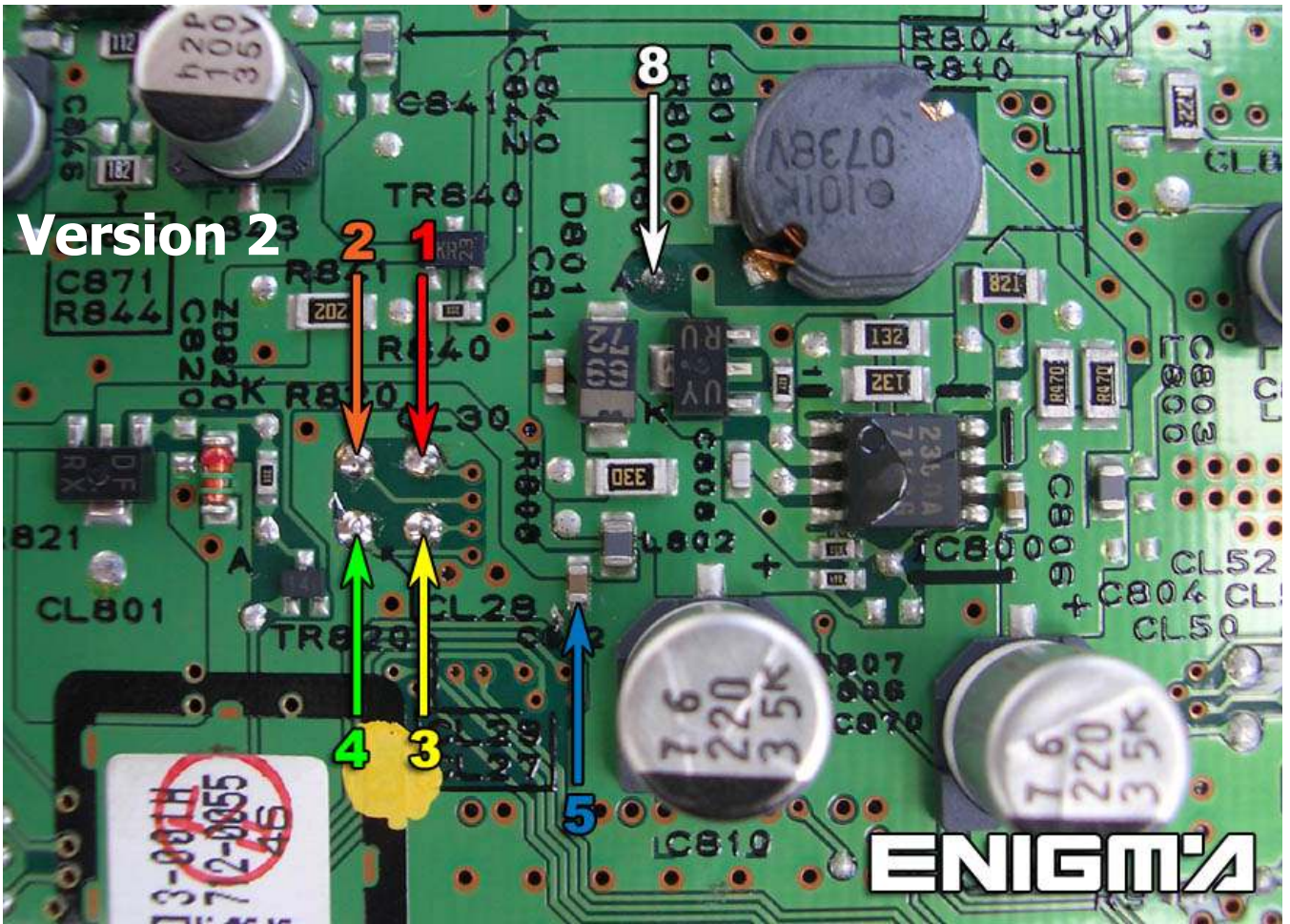
CITROEN C5 DASH FROM 2008



USE CABLE C7, OPEN BACK PLASTIC COVER FROM DASH, THEN LOCATE POINTS SHOWN ON PHOTO BELOW, AND THEN SOLDER CABLE LEADS CONCORDANCE WITH ITS NUMBER OR COLOUR AND VERSION:



Version 2



ENIGMA