

# ENIGMA USER MANUAL

## CITROEN JUMPY TO 2006

### DASHBOARD PHOTO:

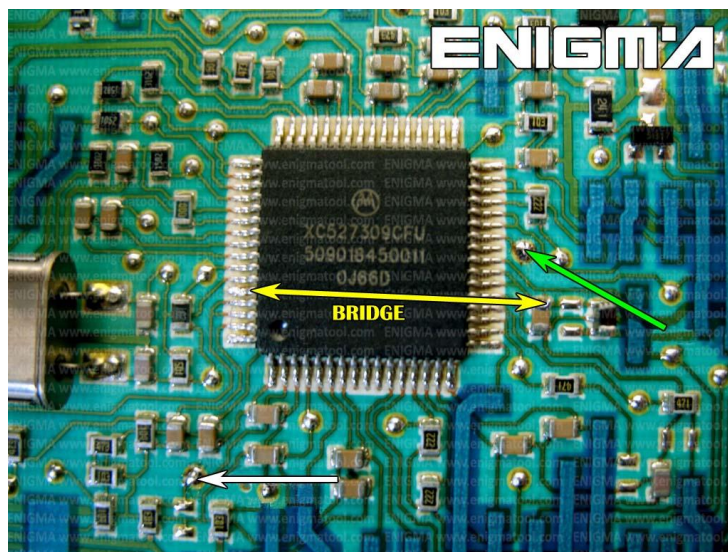


### REQUIRED CABLE(S): C12



### FOLLOW THIS INSTRUCTION STEP BY STEP:

1. Remove the dashboard and open it carefully.
2. Be very careful with indicators while disarming the dash.
3. Solder C12 cables like shown on PHOTO1.
4. See power lead connection on PHOTO2.
5. Make sure that the connection you made is secure.  
**Remember to make BRIDGE between points shown on PHOTO1.**
6. Use EDITOR to save memory backup data.
7. Press the READ KM button and check if the value shown on the screen is correct.
8. Now you can use the CHANGE KM function.



**PHOTO 1:** Solder C12 cables according to the picture above.

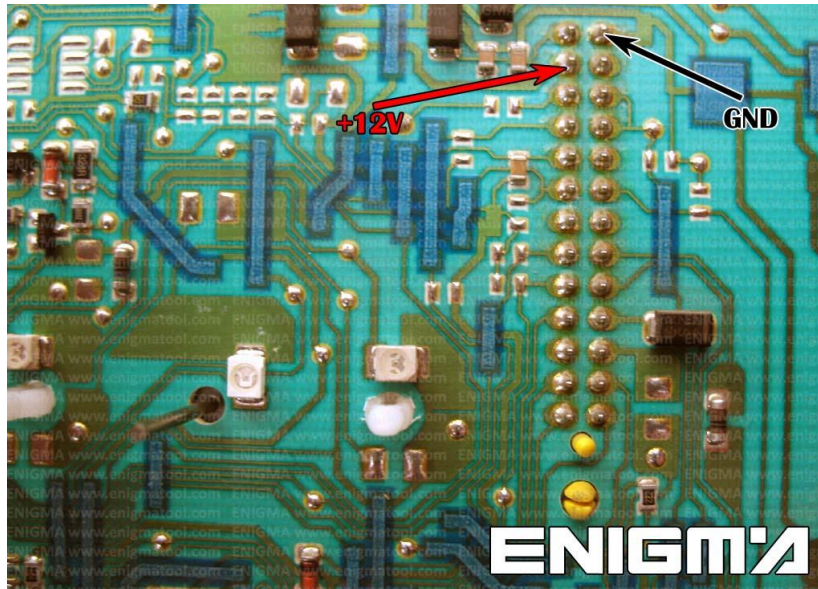
FOR MORE INFORMATION

Call **0034 983 359 787** or visit [www.enigmatool.com](http://www.enigmatool.com)

DIAGCARELECTRONICS S.L. Ebanistería 1A, 47610 Zaratán, Spain

  
**Diagcar** S.L.

ENIGMA USER MANUAL  
**CITROEN JUMPY TO 2006**



**PHOTO 2: Power lead connection.**

**LEGAL DISCLAIMER:**

**DIAGCAR ELECTRONICS S.L. does not take any legal responsibility of illegal use of any information stored in this document. Copying, distributing or taking any action in reliance with the content of this information is strictly prohibited.**

FOR MORE INFORMATION

Call **0034 983 359 787** or visit [www.enigmatool.com](http://www.enigmatool.com)

DIAGCAR ELECTRONICS S.L. Ebanistería 1A, 47610 Zaratán, Spain

