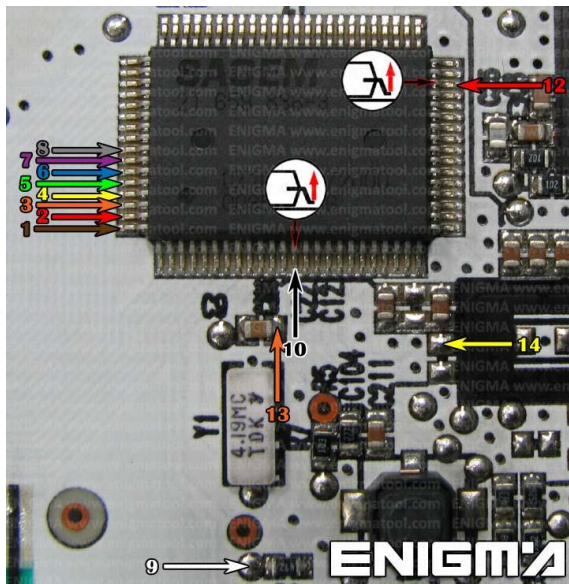


**CITROEN XSARA DASH NEC 00'-02' V2****DASH PHOTO:****REQUIRED CABLE(s):  
C13 + A1****FOLLOW THIS INSTRUCTION STEP BY STEP:**

1. Remove the dash and open it very carefully.
2. Solder cable C13 to the points on board as shown on PHOTO1.  
**Remember to lift up two PINS shown on PHOTO1.**
3. Solder cable C13 to the points on board as shown on PHOTO2.
4. Make sure that the connection you made is secure.
5. Press the READ KM button and check if the value shown on the screen is correct.
6. Now you can use the CHANGE KM function.

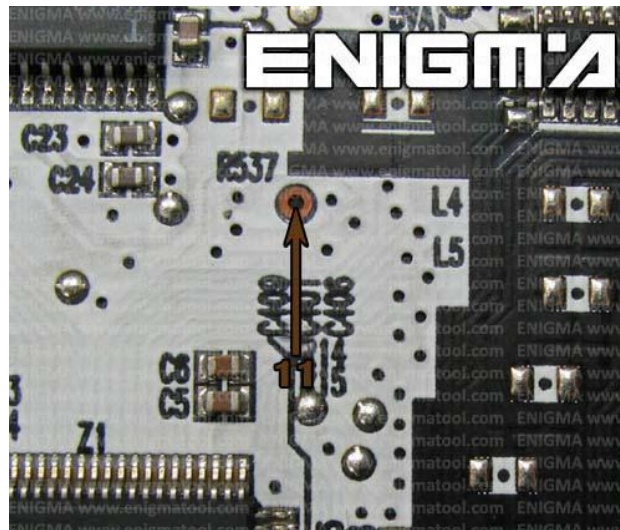
**PHOTO 1:** Solder C13 cables according to the colors like shown on the photos above.

FOR MORE INFORMATION

Call **0034 983 359 787** or visit [www.enigmatool.com](http://www.enigmatool.com)

DIAGCARELECTRONICS S.L. Ebanistería 1A, 47610 Zaratán, Spain

ENIGMA USER MANUAL  
**CITROEN XSARA DASH NEC 00'-02' V2**



**PHOTO 2:** Solder C13 cable according to the color like shown on the photo above.

## **LEGAL DISCLAIMER:**

**DIAGCAR ELECTRONICS S.L. does not take any legal responsibility of illegal use of any information stored in this document. Copying, distributing or taking any action in reliance with the content of this information is strictly prohibited.**

FOR MORE INFORMATION

Call **0034 983 359 787** or visit [www.enigmatool.com](http://www.enigmatool.com)

DIAGCARELECTRONICS S.L. Ebanistería 1A, 47610 Zaratán, Spain

