

# ENIGMA USER MANUAL

## FIAT ULYSSE BSI FROM 2006

### BSI AND LOCATION:

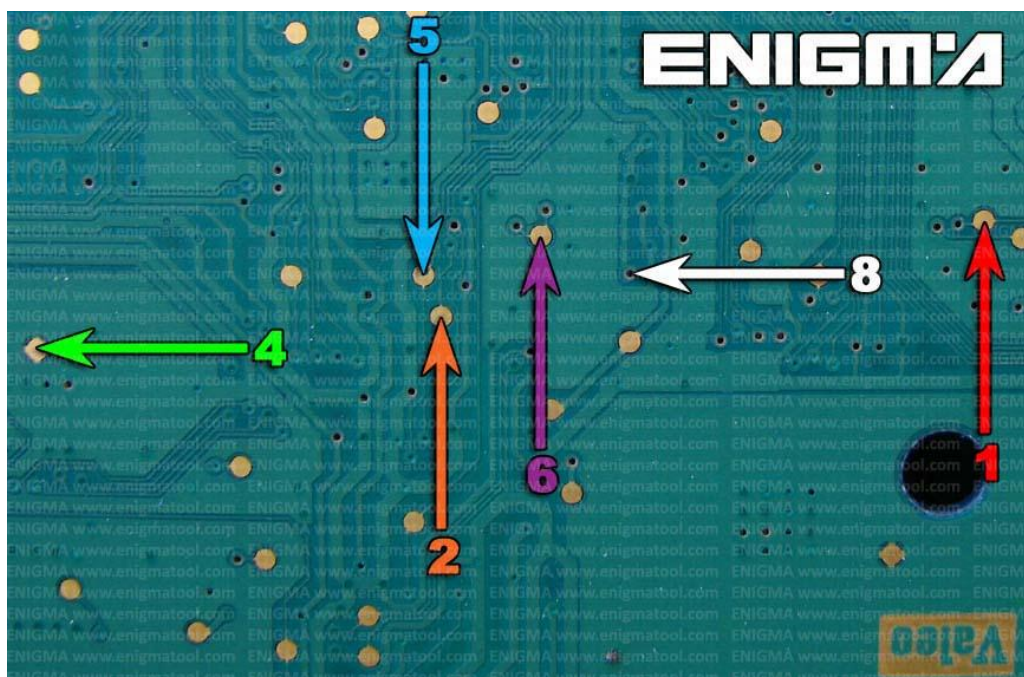


### REQUIRED CABLE(S): C7



### FOLLOW THIS INSTRUCTION STEP BY STEP:

1. Remove the BSI module and open it carefully.
2. Solder cable C7 to the points on board as shown on PHOTO1.
3. Make sure that the connection you made is secure.
4. Use the EDITOR or READ EEP to save memory backup data.
5. Press the READ KM button and check if the value shown on the screen is correct.
6. Now you can use the CHANGE KM function.



**PHOTO 1:** Solder C7 cables according to the colors like shown on the photo above.

FOR MORE INFORMATION

Call **0034 983 359 787** or visit [www.enigmatool.com](http://www.enigmatool.com)

DIAGCARELECTRONICS S.L. Ebanistería 1A, 47610 Zaratán, Spain

  
**Diagcar** S.L.

ENIGMA USER MANUAL  
**FIAT ULYSSE BSI FROM 2006**

**LEGAL DISCLAIMER:**

**DIAGCAR ELECTRONICS S.L. does not take any legal responsibility of illegal use of any information stored in this document. Copying, distributing or taking any action in reliance with the content of this information is strictly prohibited.**

FOR MORE INFORMATION

Call **0034 983 359 787** or visit **[www.enigmatool.com](http://www.enigmatool.com)**

DIAGCAR ELECTRONICS S.L. Ebanistería 1A, 47610 Zaratán, Spain

