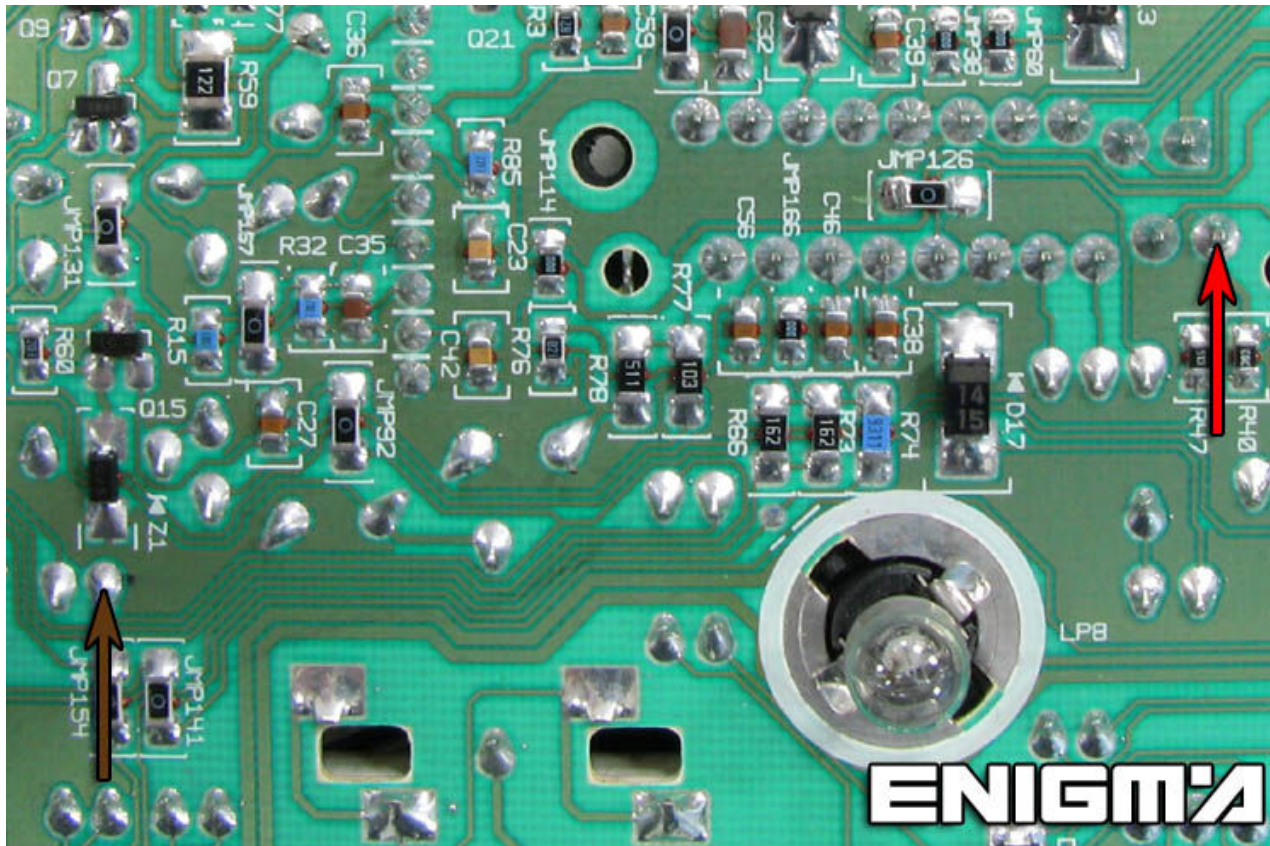


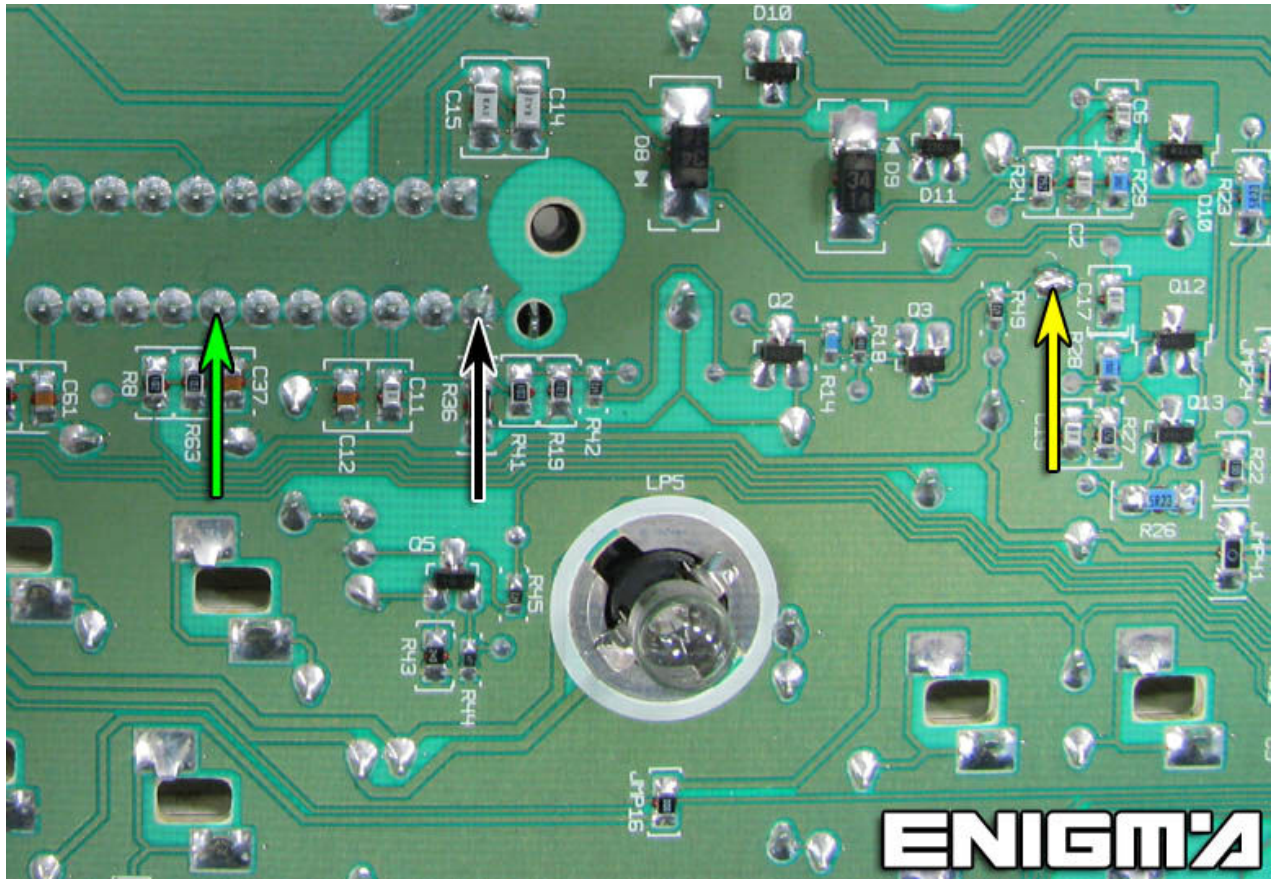
FORD F150 HC11



VERSION 1:

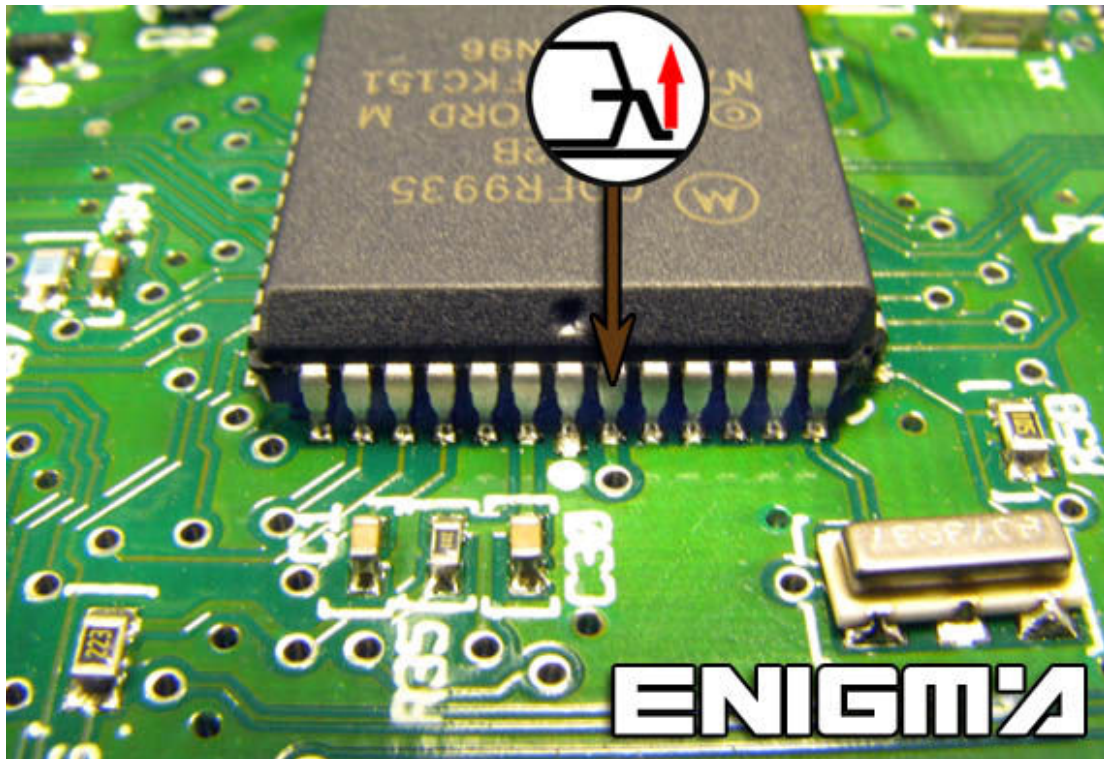
USE CABLE C11, REMOVE BACK COVER FROM DASH, THEN PULL OUT MAIN BOARD AND SOLDER CABLE LEADS ACCORDING TO COLOURS AS SHOWN ON PHOTOS BELOW:



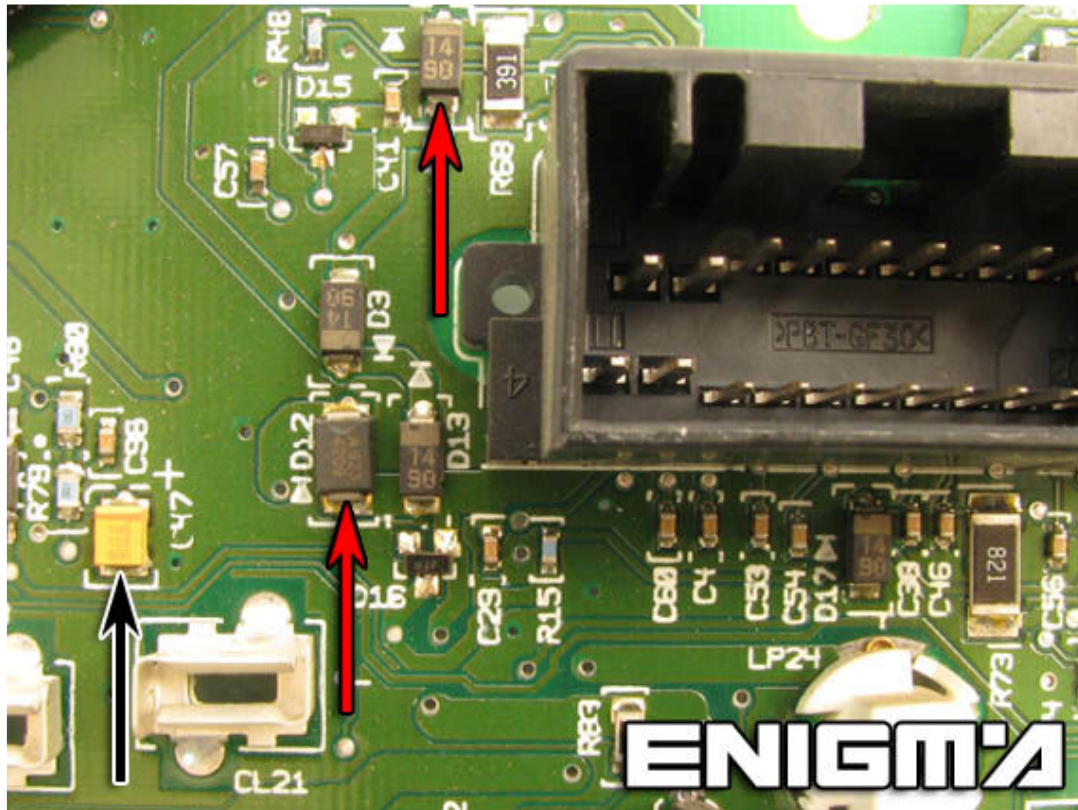


VERSION 2:

USE CABLE C11, REMOVE BACK COVER FROM DASH, LOCATE MICRO AND LIFT UP PIN AND SOLDER BROWN LEAD AS WE CAN SEE ON NEXT PHOTO:



NOW SOLDER POWER LEADS:



FINALLY SOLDER CABLE LEADS ACCORDING TO COLOURS AS SHOWN ON PHOTOS BELOW:

