

# ENIGMA USER MANUAL

## FORD F150 HC11 V2

### DASHBOARD PHOTO:

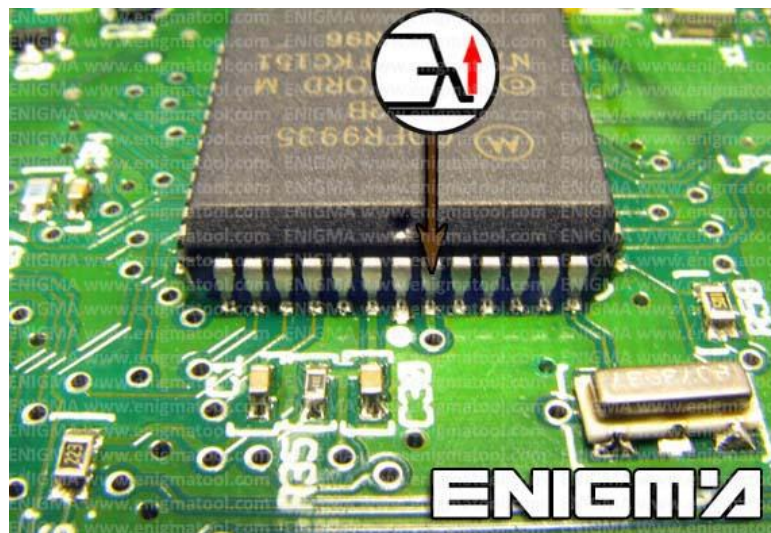


### REQUIRED CABLE(S): C11



### FOLLOW THIS INSTRUCTION STEP BY STEP:

1. Remove the dashboard and open it carefully.
2. Remove the back side of the dash to get to the main board.
3. Solder C11 cable as shown on PHOTO 1.  
**Remember to lift PIN like shown on PHOTO1.**
4. Solder C11 cables as shown on PHOTO 2.
5. Solder C11 cables as shown on PHOTO 3.
6. Make sure that the connection you made is secure.
7. Use EDITOR to save memory backup data.
8. Press the READ KM button and check if the value shown on the screen is correct.
9. Now you can use the CHANGE KM function.



**PHOTO 1:** Solder C11 cables like shown on the photo above.

FOR MORE INFORMATION

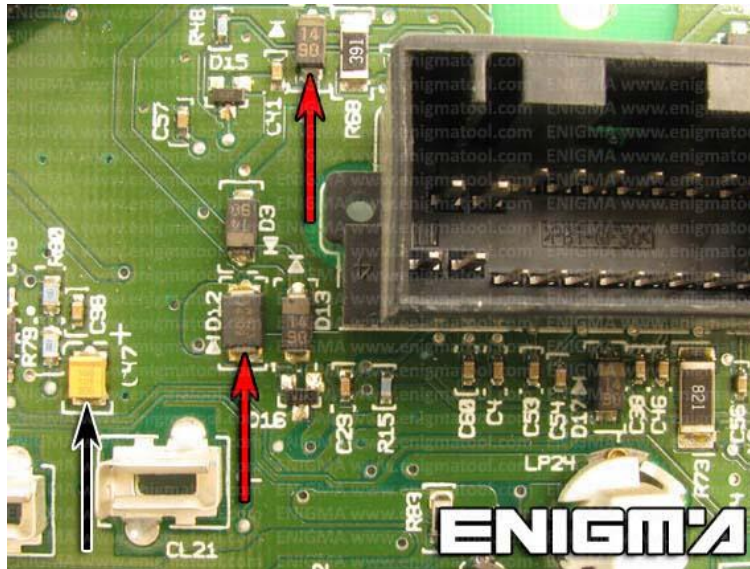
Call **0034 983 359 787** or visit [www.enigmatool.com](http://www.enigmatool.com)

DIAGCARELECTRONICS S.L. Ebanistería 1A, 47610 Zaratán, Spain

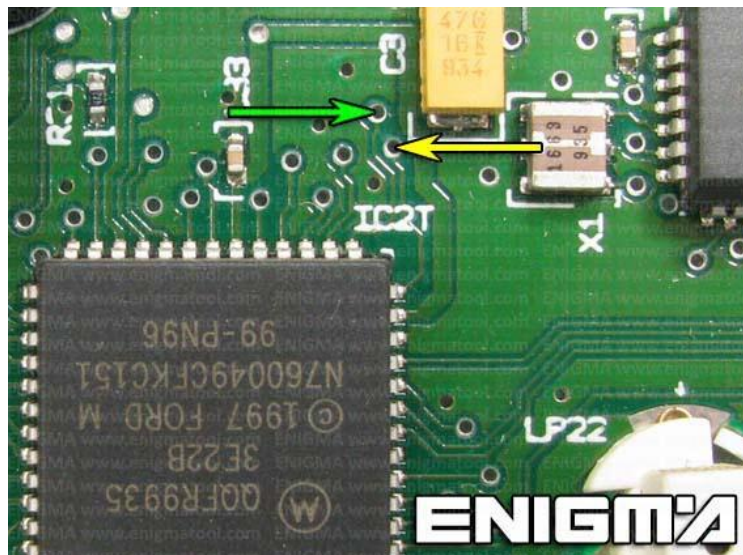
  
**Diagcar** Electronics S.L.

# ENIGMA USER MANUAL

## FORD F150 HC11 V2



**PHOTO 2: Power lead connection.**



**PHOTO 3: Solder C11 cables like shown on photo above.**

### **LEGAL DISCLAIMER:**

**DIAGCAR ELECTRONICS S.L. does not take any legal responsibility of illegal use of any information stored in this document. Copying, distributing or taking any action in reliance with the content of this information is strictly prohibited.**

FOR MORE INFORMATION

Call **0034 983 359 787** or visit [www.enigmatool.com](http://www.enigmatool.com)

DIAGCARELECTRONICS S.L. Ebanistería 1A, 47610 Zaratán, Spain