

ENIGMA USER MANUAL

FORD FOCUS HC11 TO 2002 V2

DASHBOARDS PHOTOS:



REQUIRED CABLE(S): C36



FOLLOW THIS INSTRUCTION STEP BY STEP:

1. Remove the dashboard from the car and open it carefully.
 2. Locate the Dash Diag connector on the back side of the dash.
 3. Connect cable C36 to WHITE PLUG and run CORRECT PROGRAM.
Remember to solder GREY cable to TP46 like shown on PHOTO1.
- If point TP46 is not on mainboard you have to make BRIDGE between PIN1 and PIN2 of Motorola processor.**
4. Press the READ KM button and check if the value shown on the screen is correct.
 5. Now you can use the CHANGE KM function.

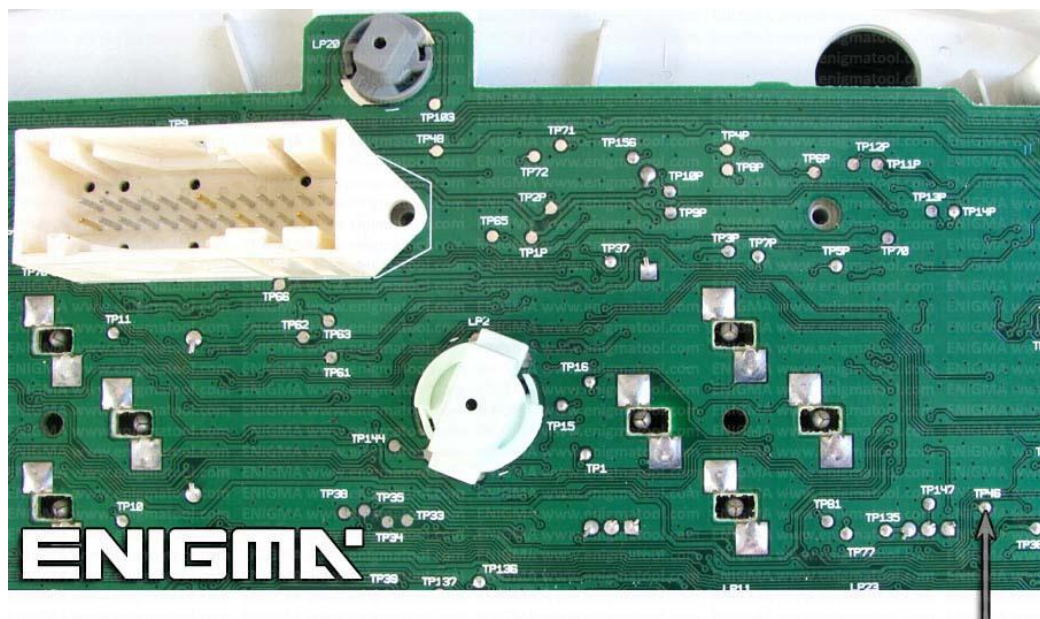


PHOTO 1: Connect cable C36 like shown on the photo above.

FOR MORE INFORMATION

Call **0034 983 359 787** or visit www.enigmatool.com

DIAGCARELECTRONICS S.L. Ebanistería 1A, 47610 Zaratán, Spain


Electronics
Diagcar S.L.

ENIGMA USER MANUAL
FORD FOCUS HC11 TO 2002 V2

LEGAL DISCLAIMER:

DIAGCAR ELECTRONICS S.L. does not take any legal responsibility of illegal use of any information stored in this document. Copying, distributing or taking any action in reliance with the content of this information is strictly prohibited.

FOR MORE INFORMATION

Call **0034 983 359 787** or visit **www.enigmatool.com**

DIAGCAR ELECTRONICS S.L. Ebanistería 1A, 47610 Zaratán, Spain

