

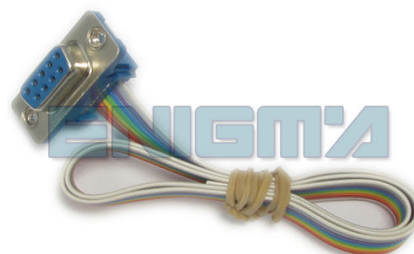
ENIGMA USER MANUAL

HONDA FORZA 250 2007 93C56

DASHBOARD PHOTO:



REQUIRED CABLE(s): C7



FOLLOW THIS INSTRUCTION STEP BY STEP:

1. Remove the dashboard and open it carefully.
2. Locate the points on the main board as shown on PHOTO 1.
3. Solder cables according to colors as shown on PHOTO 1.
4. Connect power lead as shown on the PHOTO2.
5. Make sure that the connection you made is secure.
6. Press the READ EEP button and save the memory backup data.
7. Press the READ KM button and check if the value shown on the screen is correct.
8. Now you can use the CHANGE KM function.

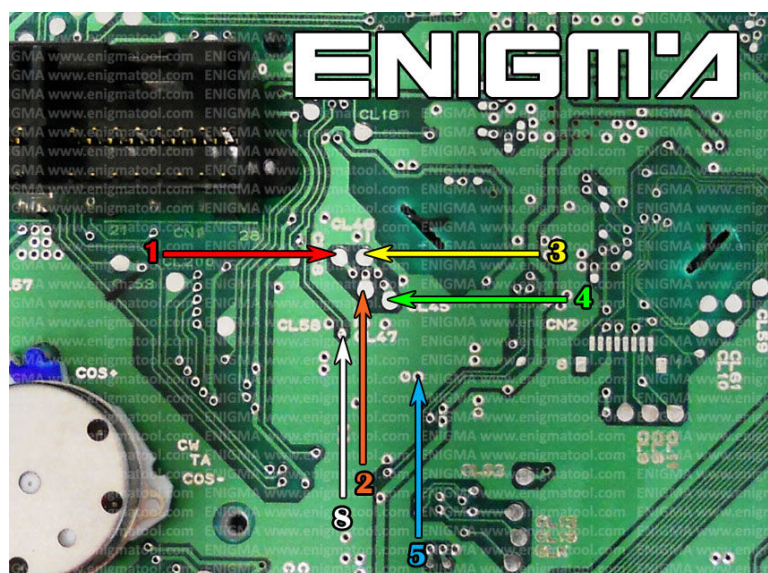


PHOTO 1: Connect cable C7 to the points as show on the picture above.

FOR MORE INFORMATION

Call **0034 983 359 787** or visit www.enigmatool.com

DIAGCARELECTRONICS S.L. Ebanistería 1A, 47610 Zaratán, Spain


Diagcar S.L.

ENIGMA USER MANUAL

HONDA FORZA 250 2007 93C56

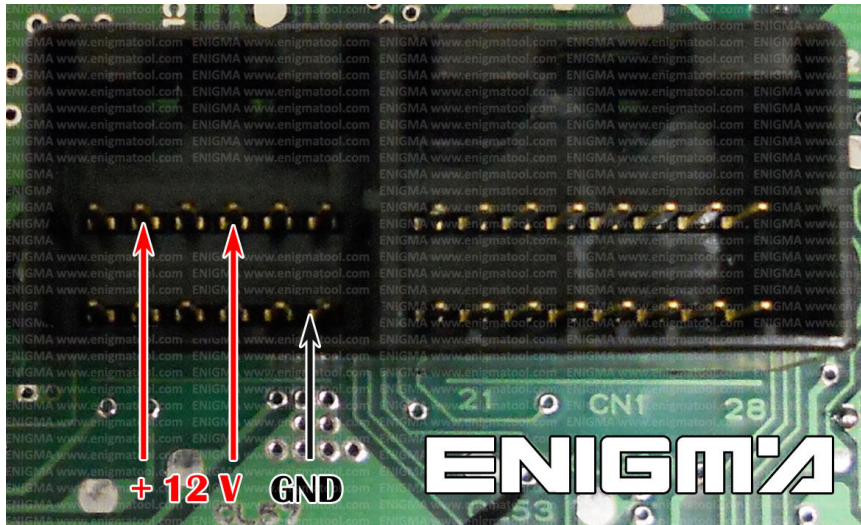


PHOTO 2: Power supply to check old or new data value.

LEGAL DISCLAIMER:

DIAGCAR ELECTRONICS S.L. does not take any legal responsibility of illegal use of any information stored in this document. Copying, distributing or taking any action in reliance with the content of this information is strictly prohibited.

FOR MORE INFORMATION

Call **0034 983 359 787** or visit www.enigmatool.com

DIAGCAR ELECTRONICS S.L. Ebanistería 1A, 47610 Zaratán, Spain

