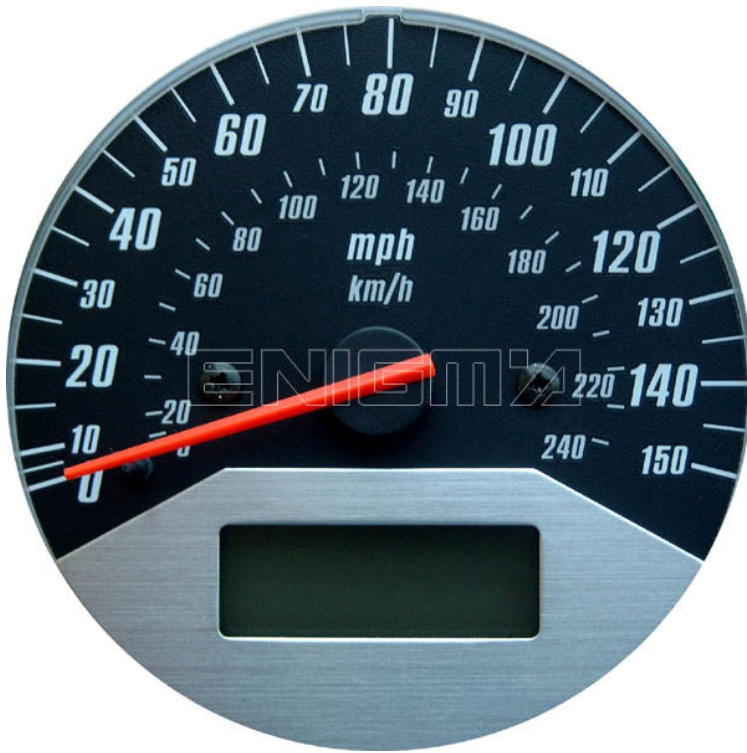


# HONDA VTX 1800



USE CABLE C7, OPEN DASH REMOVING OUTSIDE RING, IT IS VERY DIFICULT, THEN WE CAN SEE THE EPROM MEMORY AND POINTS WHERE WE CAN SOLDER CABLE LEADS ACCORDING TO THEIR COLOURS AS SHOW TO US BELOW PHOTO:

