

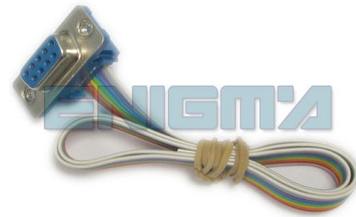
ENIGMA USER MANUAL

KAWASAKI VN1600 C56

DASHBOARD PHOTO:



REQUIRED CABLE(s): C7



FOLLOW THIS INSTRUCTION STEP BY STEP:

1. Remove the dashboard and open it carefully.
2. Locate the EEPROM memory.
3. Look at PHOTO1 to find correct position of PIN1.
4. Solder C7 cable like shown on PHOTO1.
5. Make sure that you connected the C7 cable correctly.
6. Press the READ EEP button and save EEPROM memory backup data.
7. Press the READ KM button and check if the value shown on the screen is correct.
8. Now you can use the CHANGE KM function.

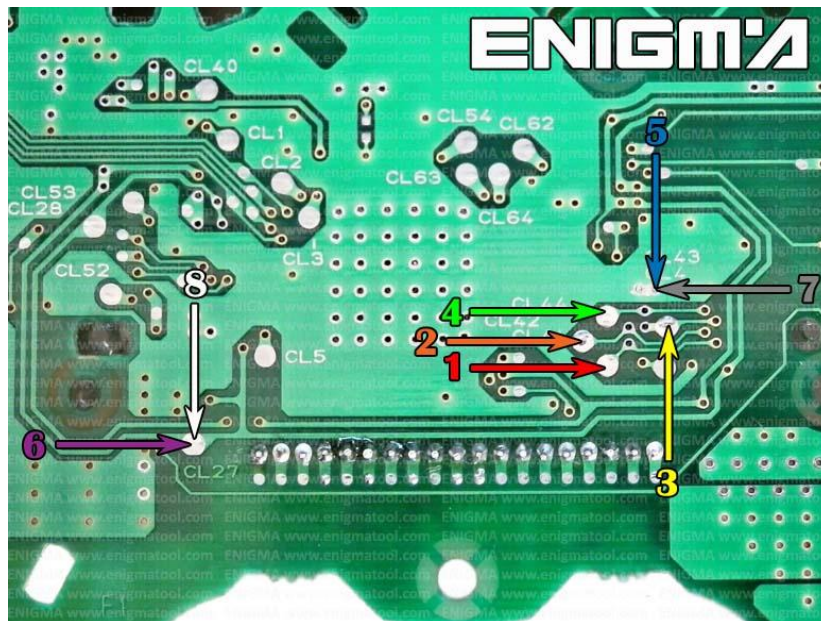


PHOTO 1: Solder C7 cable according to the picture above.

FOR MORE INFORMATION

Call **0034 983 359 787** or visit www.enigmatool.com

DIAGCARELECTRONICS S.L. Ebanistería 1A, 47610 Zaratán, Spain


Diagcar Electronics S.L.

ENIGMA USER MANUAL
KAWASAKI VN1600 C56

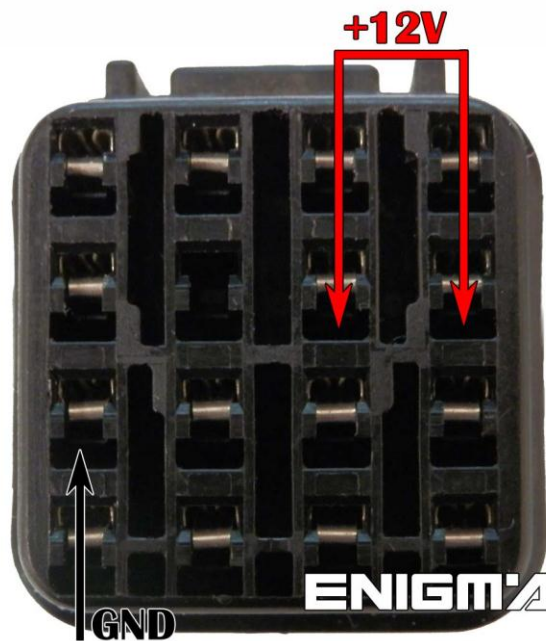


PHOTO 2: Power connection.

LEGAL DISCLAIMER:

DIAGCAR ELECTRONICS S.L. does not take any legal responsibility of illegal use of any information stored in this document. Copying, distributing or taking any action in reliance with the content of this information is strictly prohibited.

FOR MORE INFORMATION

Call **0034 983 359 787** or visit www.enigmatool.com

DIAGCAR ELECTRONICS S.L. Ebanistería 1A, 47610 Zaratán, Spain

