

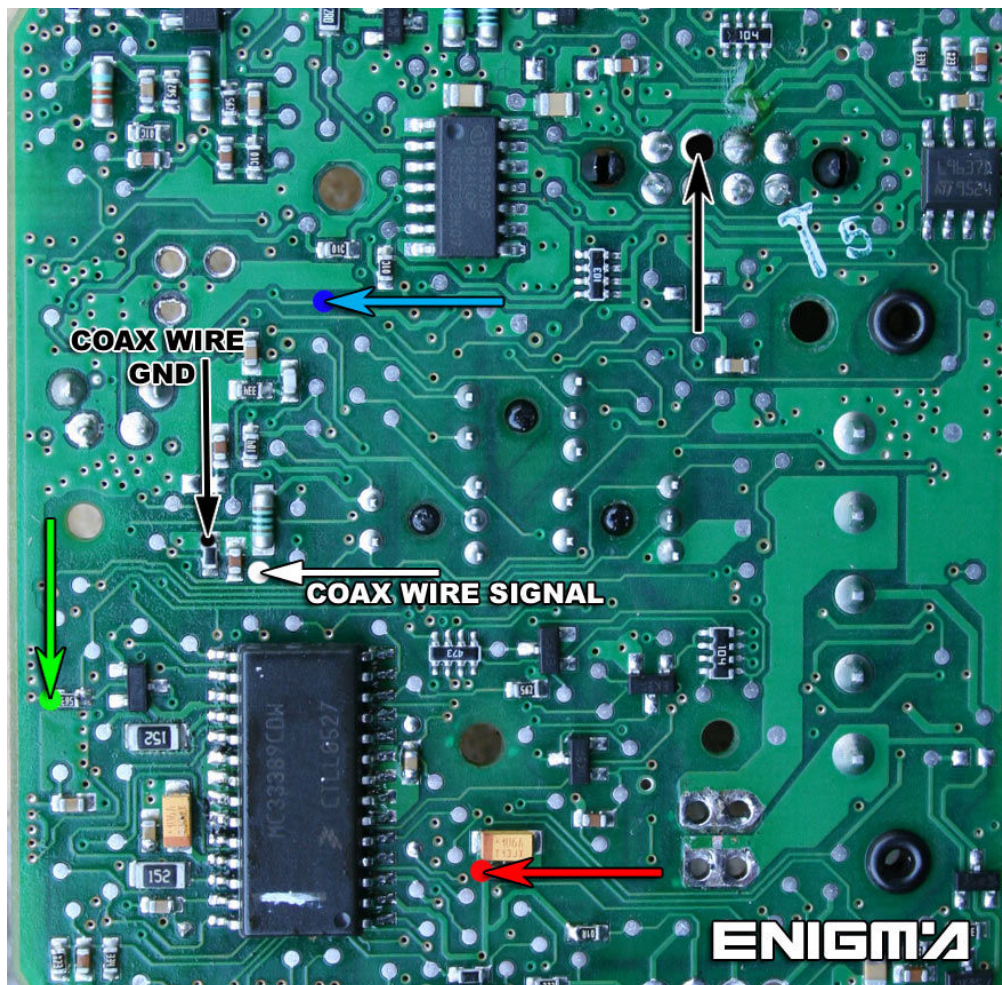
# MERCEDES BENZ A-W169 EZS

USE CABLE **C45 + A6 ADAPTER**. REMOVE MODULE FROM CAR CAREFULLY:



REMOVE BACK PLASTIC COVER FROM EZS, AND LOCATE POINTS ON THE BOARD CHECKING PHOTOS BELOWS AND SOLDER CABLE LEADS AS IT SHOWS TO US, WE CAN NOT READ OLD VALUE, WE HAVE TO GO DIRECT TO PROGAM, ENIGMA WILL RESET IT AUTOMATIC:

## VERSION 1:



VERSION 2:

