

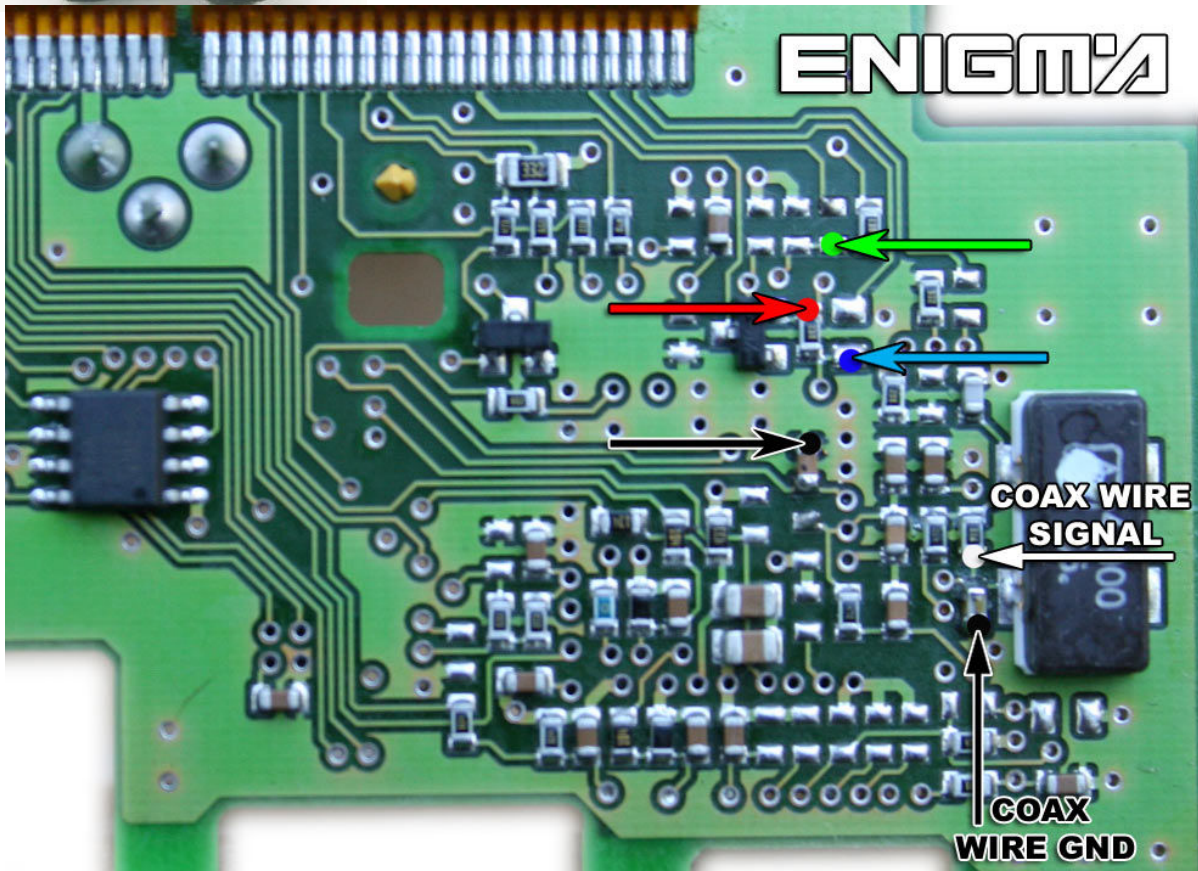
# MERCEDES BENZ SLR MCLAREN EZS

USE CABLE **C45 + A6 ADAPTER**. REMOVE MODULE FROM CAR CAREFULLY:



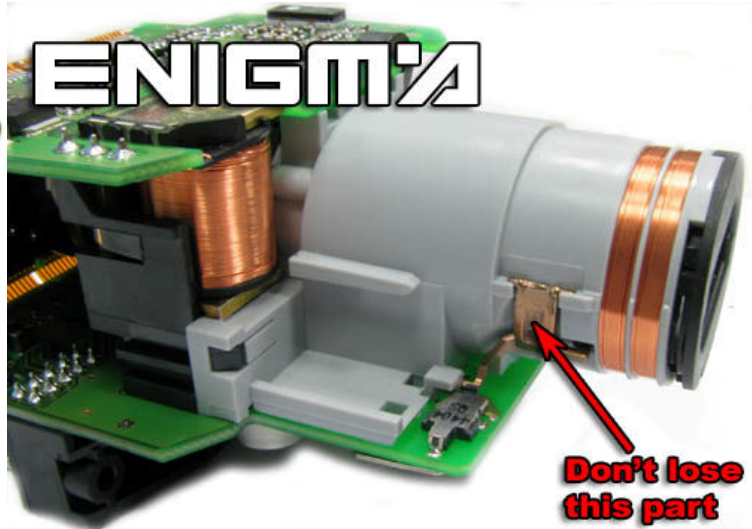
VERSION 1:

REMOVE PLASTIC COVERS FROM EZS, AND LOCATE POINTS ON THE BOARD LIKE IN PHOTO BELOW AND SOLDER CABLE LEADS AS IT SHOWS TO US:

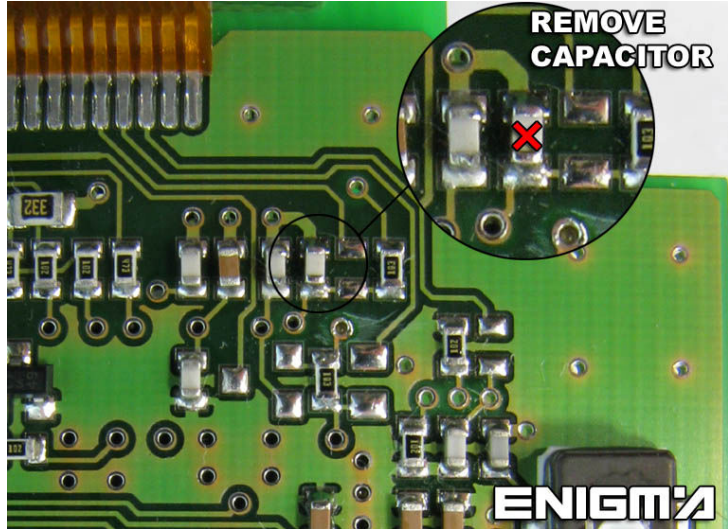


**VERSION 2:**

**IN NEWER VERSIONS WE HAVE A NEW MODULE:**



REMOVE PLASTIC COVERS FROM EZS, REMOVE CAPACITOR LIKE IN THE PHOTO; LOCATE POINTS ON THE BOARD LIKE IN THE PHOTO BELOW AND SOLDER CABLE LEADS AS IT SHOWS TO US:



CABLE LEADS AS IT SHOWS TO US:

