

# MERCEDES VITO DASH 2007- 25LC640

## DASHBOARD PHOTO:

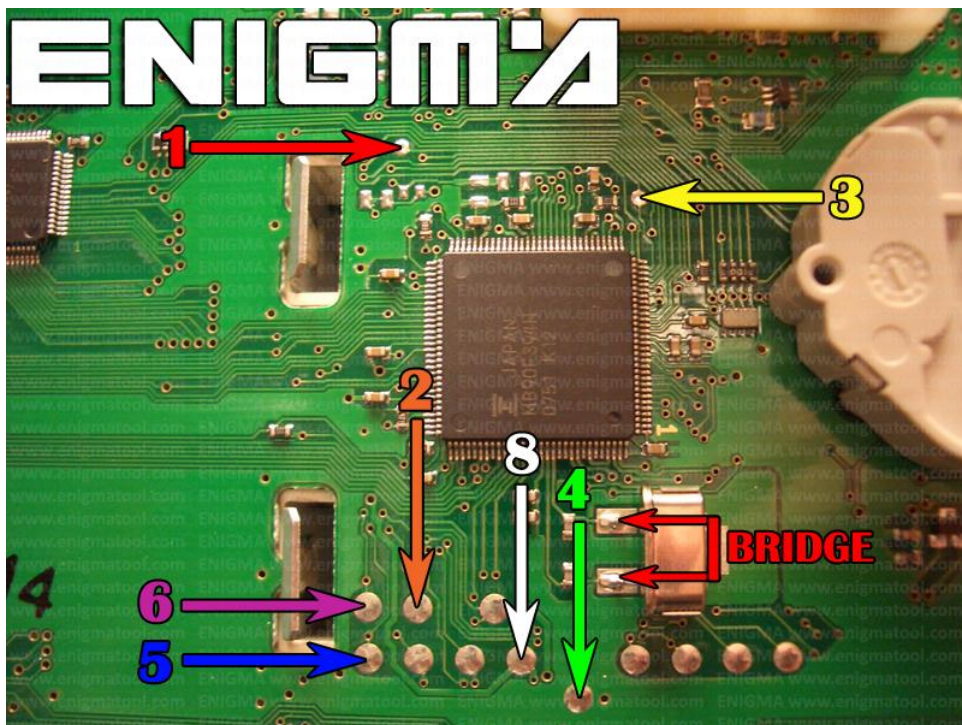


## REQUIRED CABLE(s): C7



## FOLLOW THIS INSTRUCTION STEP BY STEP:

1. Remove the dashboard and open it carefully.
2. Look at PHOTO 1 and solder C7 cables according to the colors shown on the photo.
3. Make sure that the connection you made is secure.
4. Press the READ EEP button or use EDITOR to save memory backup data.
5. Press the READ KM button and check if the value shown on the screen is correct.
6. Now you can use the CHANGE KM function.



**PHOTO 1:** Solder C7 cables according to the picture above.

FOR MORE INFORMATION

Call **0034 983 359 787** or visit [www.enigmatool.com](http://www.enigmatool.com)

DIAGCARELECTRONICS S.L. Ebanistería 1A, 47610 Zaratán, Spain

ENIGMA USER MANUAL

# MERCEDES VITO DASH 2007- 25LC640

## **LEGAL DISCLAIMER:**

**DIAGCAR ELECTRONICS S.L. does not take any legal responsibility of illegal use of any information stored in this document. Copying, distributing or taking any action in reliance with the content of this information is strictly prohibited.**

FOR MORE INFORMATION

Call **0034 983 359 787** or visit **[www.enigmatool.com](http://www.enigmatool.com)**

DIAGCAR ELECTRONICS S.L. Ebanistería 1A, 47610 Zaratán, Spain

