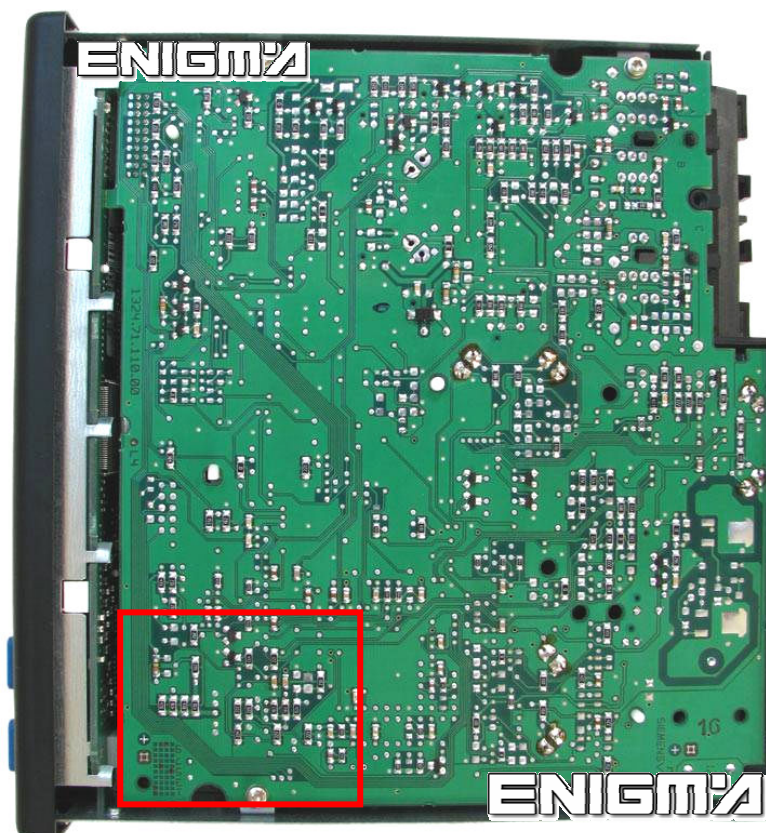


RENAULT TACHOGRAPH

IN THIS KINDS OF VEHICLES DASH IS NOT IMPORTANT, ALL INFO IS STORED INTO TACHO MODULE, WE CAN SEE IT IN PHOTO BELOW.

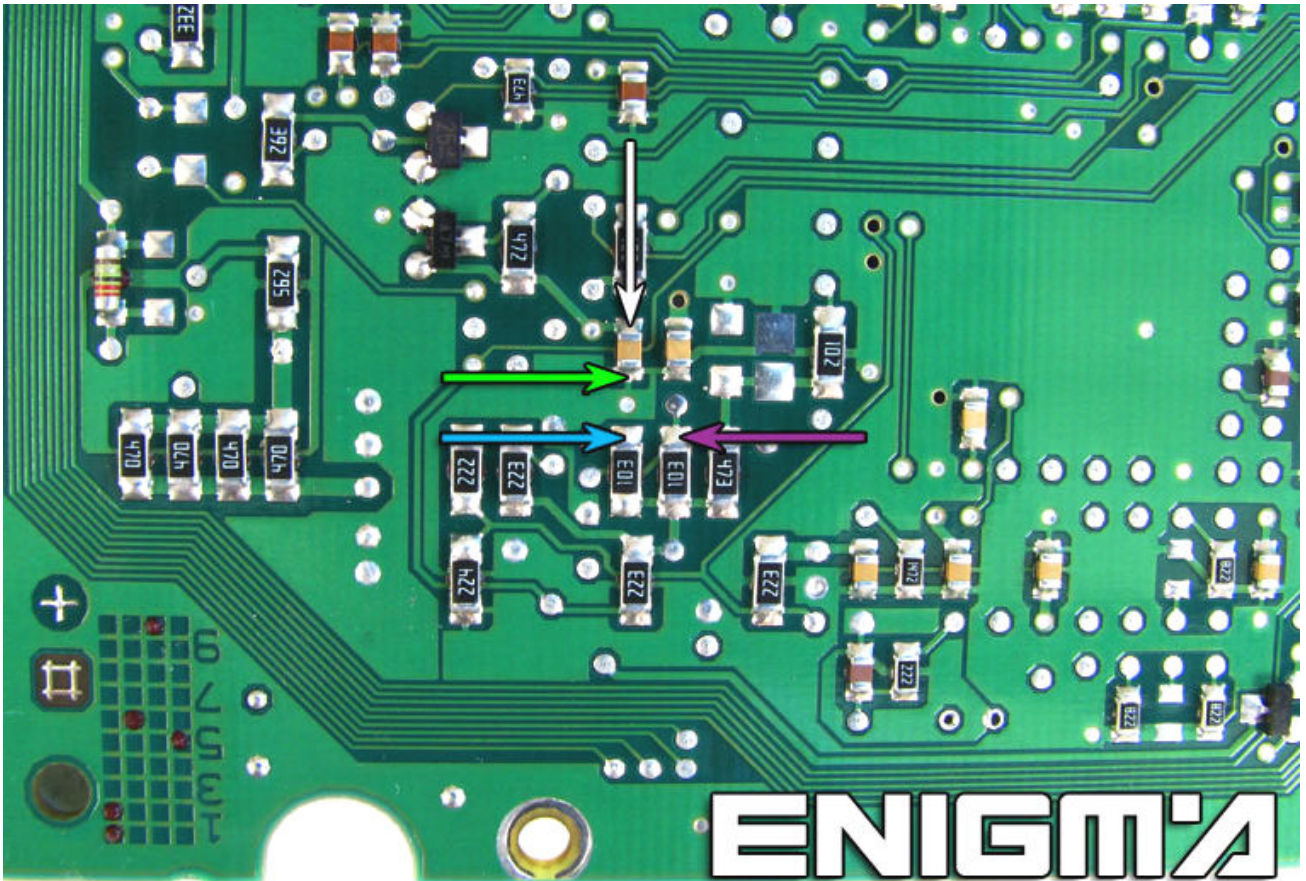


AFTER TAKE IT OUT FROM CAR WE MUST PULL OFF RED FILLING FROM UP, UNSCREW ONE TORX AND REMOVE UPPER METAL COVER, AND CHECK ZONE INSIDE **RED BOX**:

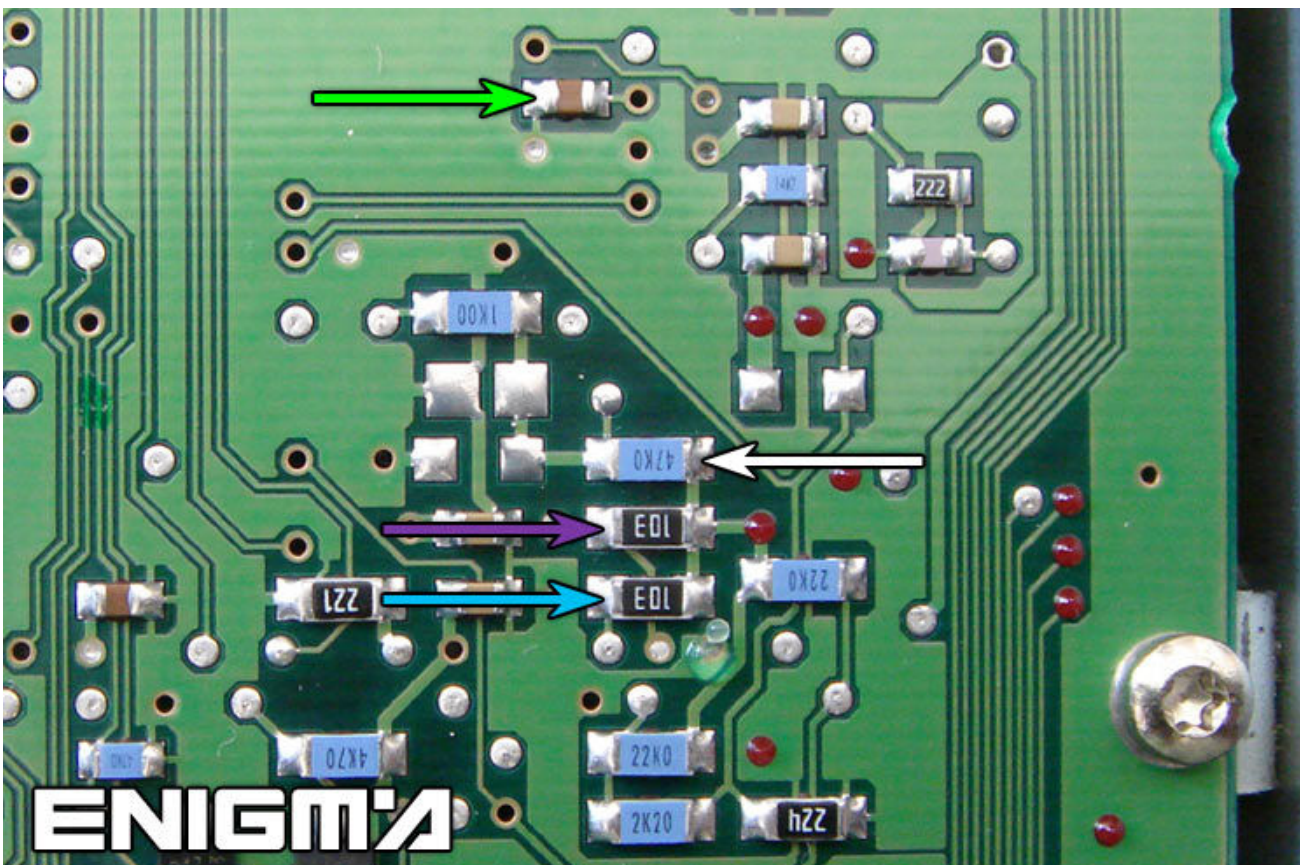


NOW WE CAN HAVE 3 DIFFERENT VERSIONS. CHECK WHICH ONE IS OURS AND USING C7 CABLE LOCATE POINTS AND SOLDER 4 WIRES LIKE WE CAN SEE ON PHOTOS ACCORDING EACH VERSION:

- VERSION 1



- VERSION 2



- VERSION 3

