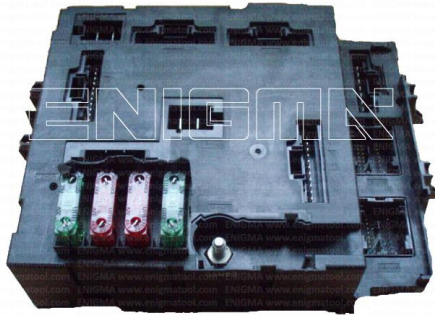


# ENIGMA USER MANUAL

## SMART FORFOUR ETACS 9S12

**ETACS (only example photo):**

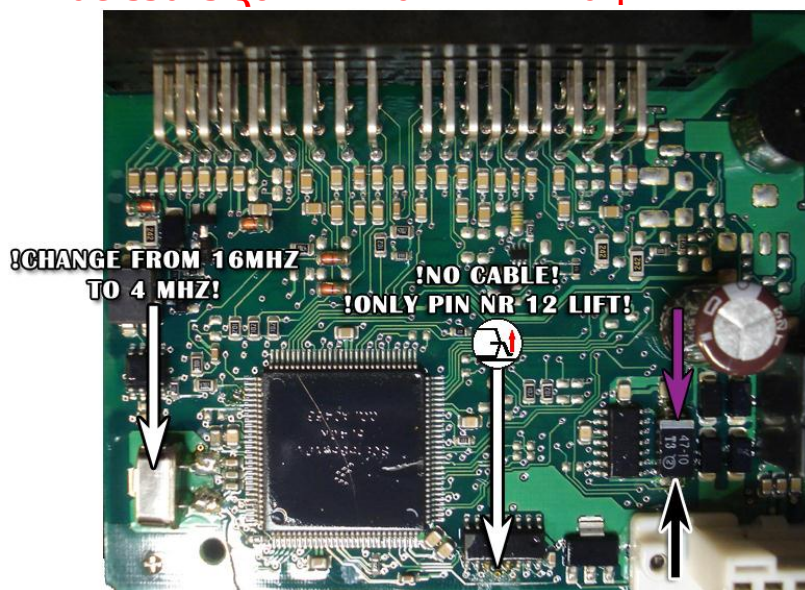


**REQUIRED CABLE(s):**  
**C12**



### **FOLLOW THIS INSTRUCTION STEP BY STEP:**

1. Remove the ETACS module from the car and open it **VERY CAREFULLY!**
2. Solder C12 cables to the points on board as shown on PHOTO1.  
**Remember to LIFT UP PIN 12 and to put it back to his place after the work is done.**
3. Solder C12 cables to the points on board as shown on PHOTO2.
4. Make sure that the connection you made is secure.
5. Press the READ KM button and check if the value shown on the screen is correct.
6. Now you can use the CHANGE KM function.  
**! IF YOU GET BDM STATUS NOT READY ERROR PLEASE DO AS WRITTEN ON PHOTO1, CHANGE THE PROCESSORS QUARTZ FROM 16 MHZ TO 4 MHZ AND TRY AGAIN !**



**PHOTO 1:** Solder C12 cables according to the colors like shown on the photo above.

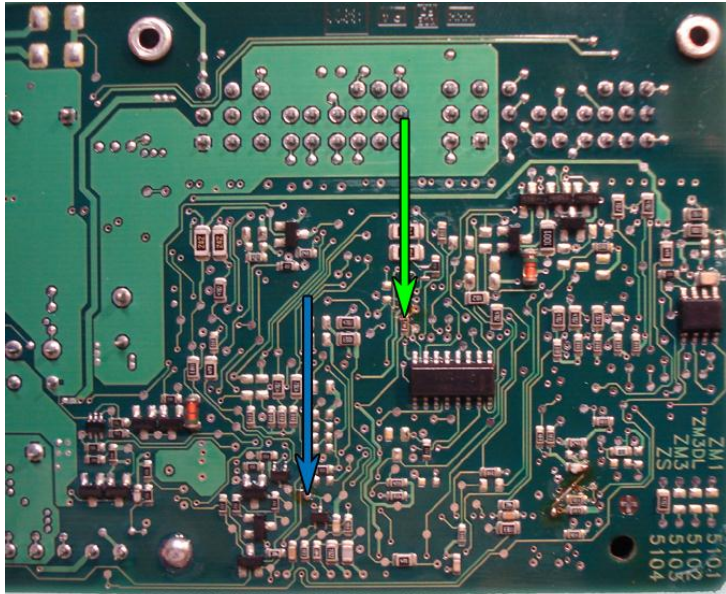
FOR MORE INFORMATION

Call **0034 983 359 787** or visit [www.enigmatool.com](http://www.enigmatool.com)

DIAGCARELECTRONICS S.L. Ebanistería 1A, 47610 Zaratán, Spain

  
**Diagcar** S.L.

ENIGMA USER MANUAL  
**SMART FORFOUR ETACS 9S12**



**PHOTO 2:** Solder C12 cables according to the colors like shown on the photo above.

## **LEGAL DISCLAIMER:**

**DIAGCAR ELECTRONICS S.L. does not take any legal responsibility of illegal use of any information stored in this document. Copying, distributing or taking any action in reliance with the content of this information is strictly prohibited.**

FOR MORE INFORMATION

Call **0034 983 359 787** or visit [www.enigmatool.com](http://www.enigmatool.com)

DIAGCARELECTRONICS S.L. Ebanistería 1A, 47610 Zaratán, Spain