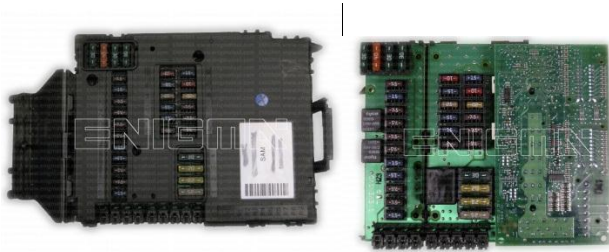


# ENIGMA USER MANUAL

## SMART SAM-BSI HC9S12

### SAM (only example photo):



### REQUIRED CABLE(s): C12



### FOLLOW THIS INSTRUCTION STEP BY STEP:

1. See PHOTO1 to find SAM location.
2. Remove the SAM module from the car and open it **VERY CAREFULLY!**
3. Solder C12 cables to the points on board as shown on PHOTO2.  
**Remember to REMOVE COMPONENT and put it back after the work is done.**
4. Solder C12 cables to the points on board as shown on PHOTO3.
5. Make sure that the connection you made is secure.
6. Use EDITOR to save memory backup data.
7. Press the READ KM button and check if the value shown on the screen is correct.
8. Now you can use the CHANGE KM function.



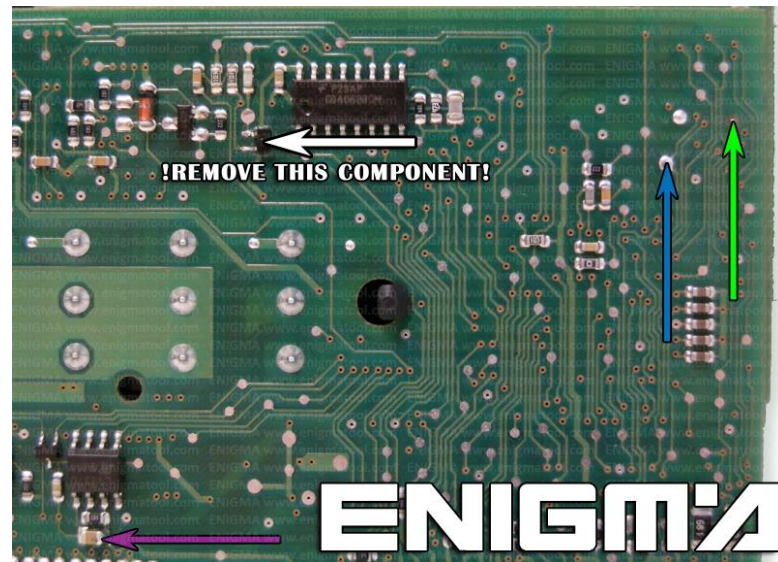
**PHOTO 1: SAM location.**

FOR MORE INFORMATION

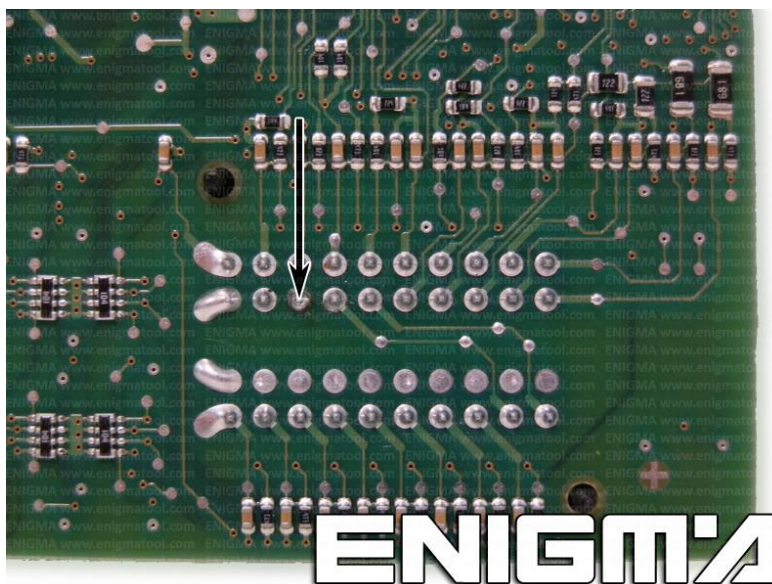
Call **0034 983 359 787** or visit [www.enigmatool.com](http://www.enigmatool.com)

DIAGCARELECTRONICS S.L. Ebanistería 1A, 47610 Zaratán, Spain

ENIGMA USER MANUAL  
**SMART SAM-BSI HC9S12**



**PHOTO 2:** Solder C12 cables according to the colors like shown on the photo above.



**PHOTO 3:** Solder C12 cable according to the color like shown on the photo above.

**LEGAL DISCLAIMER:**

**DIAGCAR ELECTRONICS S.L. does not take any legal responsibility of illegal use of any information stored in this document. Copying, distributing or taking any action in reliance with the content of this information is strictly prohibited.**

FOR MORE INFORMATION

Call **0034 983 359 787** or visit [www.enigmatool.com](http://www.enigmatool.com)

DIAGCARELECTRONICS S.L. Ebanistería 1A, 47610 Zaratán, Spain