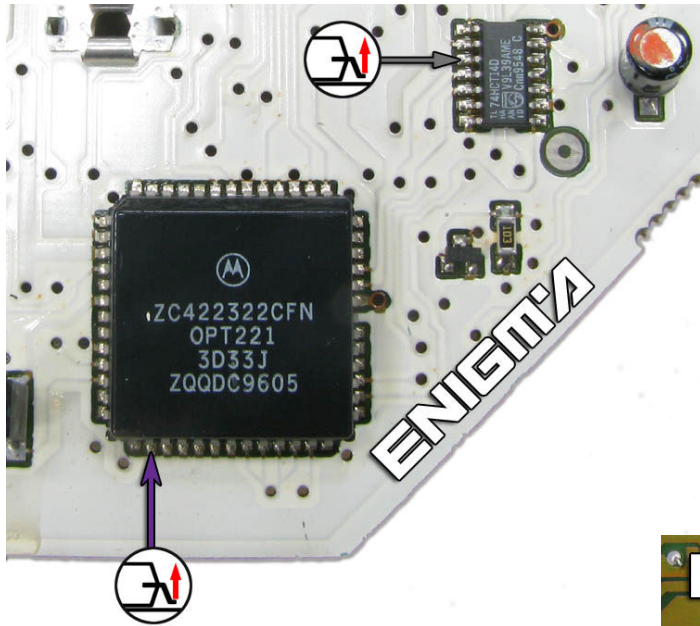


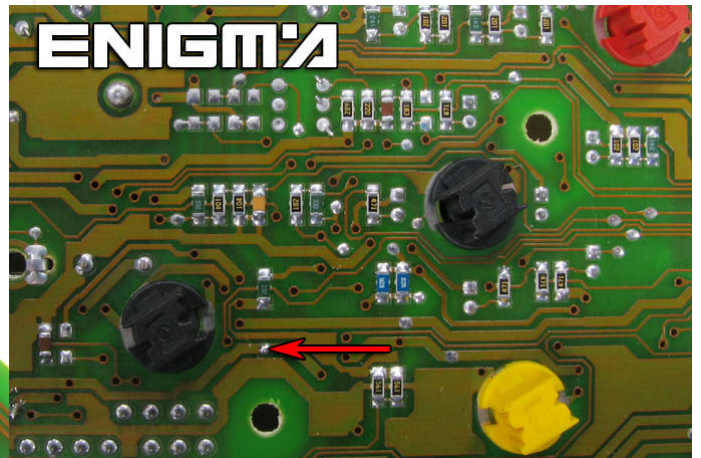
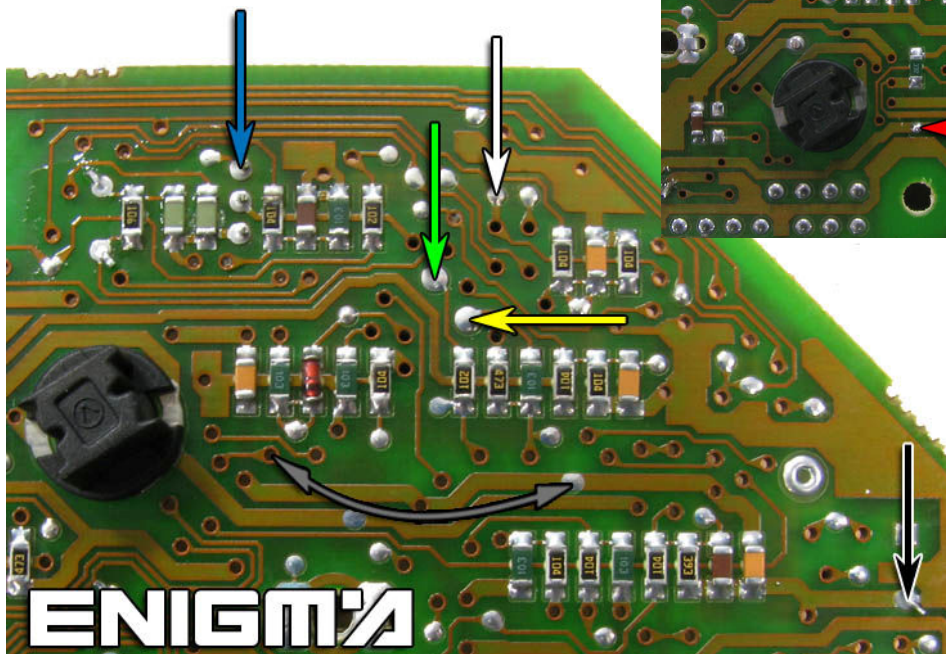
ALFA ROMEO GTV



USE CABLE C11, REMOVE BACK COVER FROM DASH, THEN REMOVE MAIN BOARD, JUST PULL IT OFF.

FIRST WE MUST LIFT UP THESE TWO PINS; IN THE PIN FROM PROCESSOR WE MUST SOLDER **VIOLET** LEAD:

FINALLY SOLDER CABLE LEADS ACCORDING TO COLOURS AS SHOWN OF BELOWS PHOTOS:



ENIGMA

ENIGMA