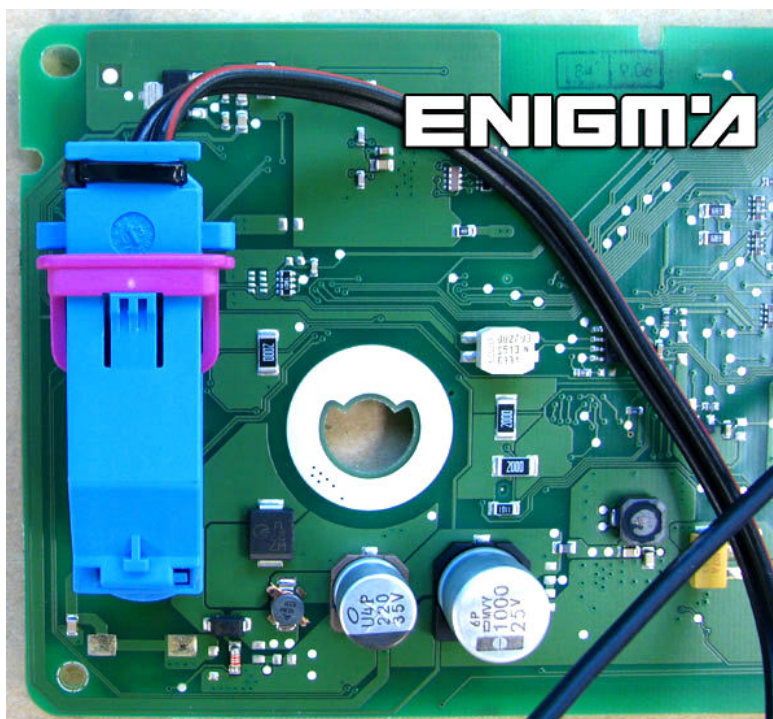


AUDI A3 FROM 07-2006

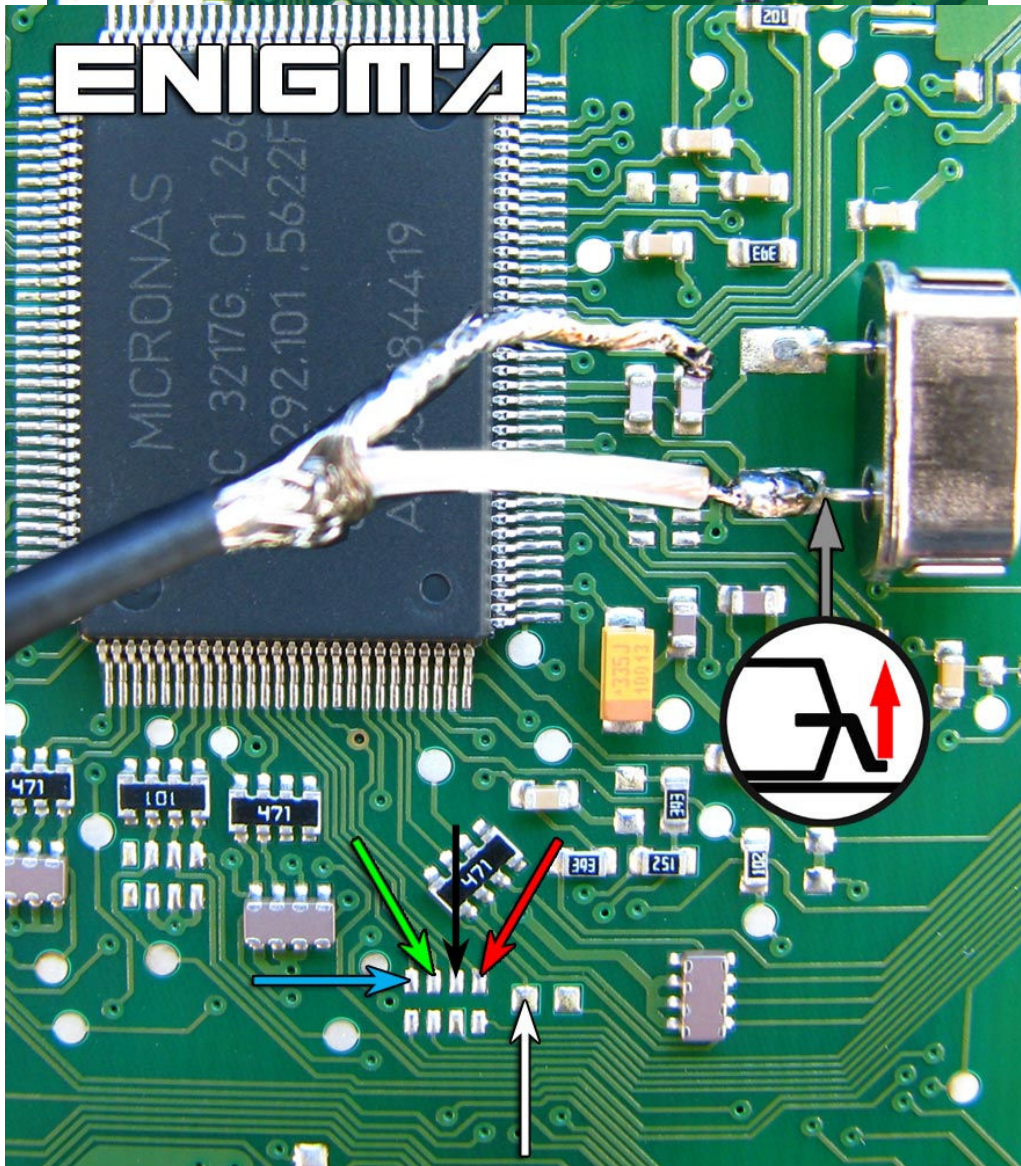
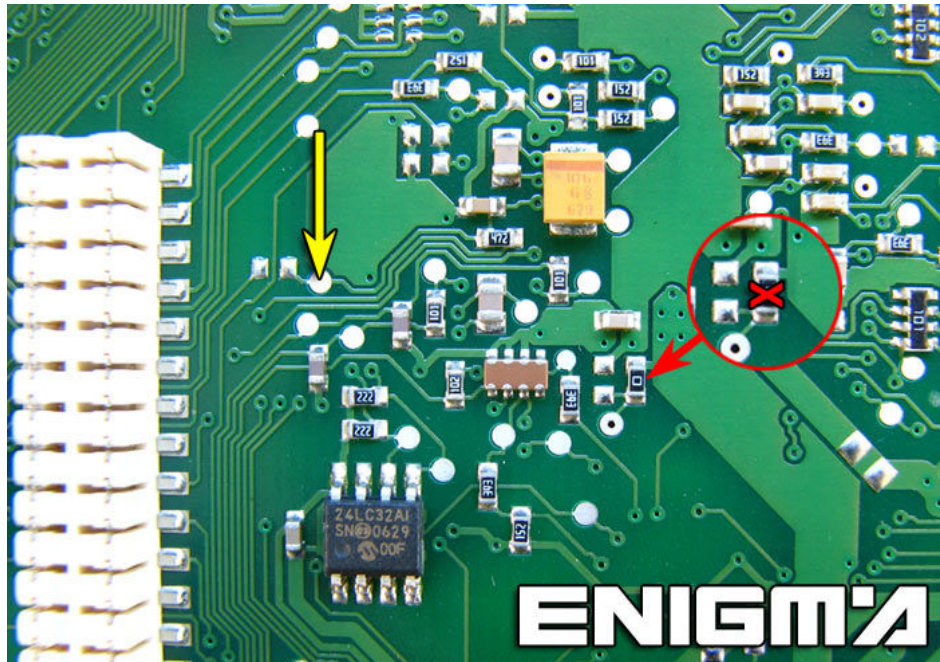


USE CABLE **C44 + A5 ADAPTER**, REMOVE DASH FROM CAR AND OPEN IT COMPLETELY. SEPARATE BOTH BOARDS FROM DASH, AND CONNECT POWER ON PLUG:



NOW LOCATE POINTS ON THE OTHER SIDE OF BOARD LIKE IN PHOTO BELOW AND SOLDER CABLE LEADS AS IT SHOWS TO US:

REMEMBER TO REMOVE RESISTOR
LIFT UP PIN FROM QUARZ AND SOLDER WHITE COAXIAL CABLE TO BOARD WITH PIN UP!!!



READ KEY FILE AND **SAVE IT** THEN CONNECT BACK TO CAR AND PROGRAM BY **OBD**.