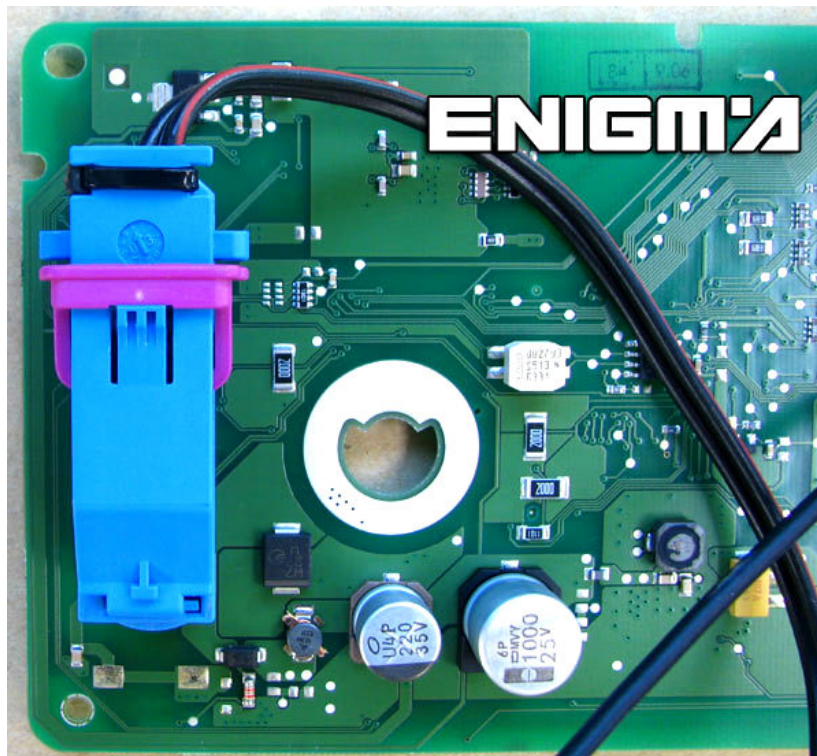


AUDI TT FROM 07-2006



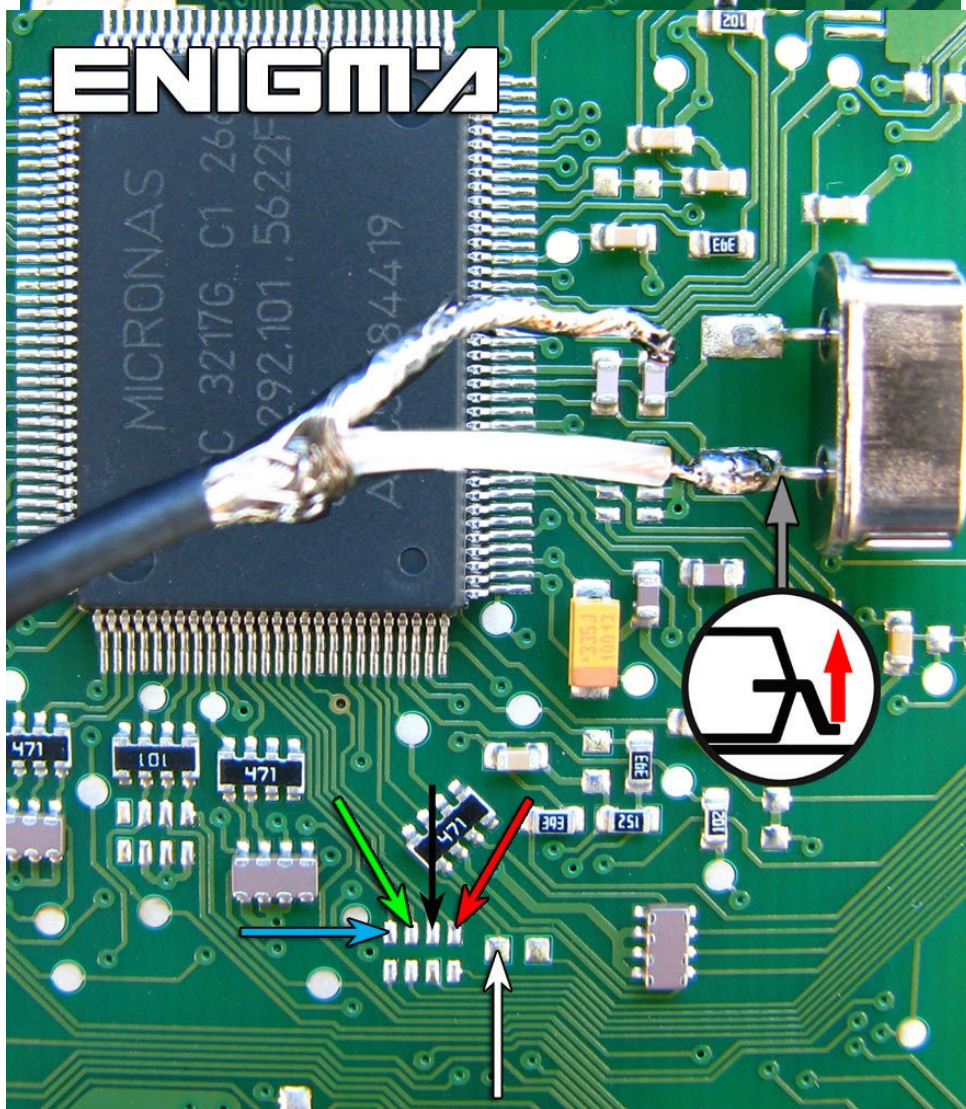
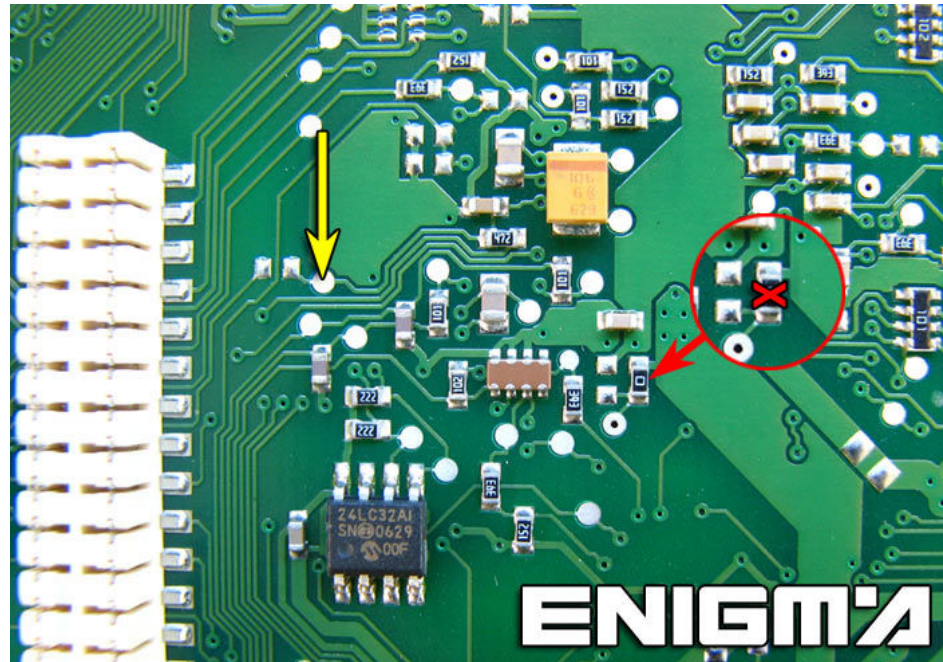
USE CABLE **C44 + A5 ADAPTER**, REMOVE DASH FROM CAR AND OPEN IT COMPLETELY. SEPARATE BOTH BOARDS FROM DASH, AND CONNECT POWER ON PLUG:



NOW LOCATE POINTS ON THE OTHER SIDE OF BOARD LIKE IN PHOTO BELOW AND SOLDER CABLE LEADS AS IT SHOWS TO US:

REMEMBER TO REMOVE RESISTOR

LIFT UP PIN FROM QUARZ AND SOLDER WHITE COAXIAL CABLE TO BOARD WITH PIN UP!!!



READ KEY FILE AND SAVE IT THEN CONNECT BACK TO CAR AND PROGRAM BY OBD.