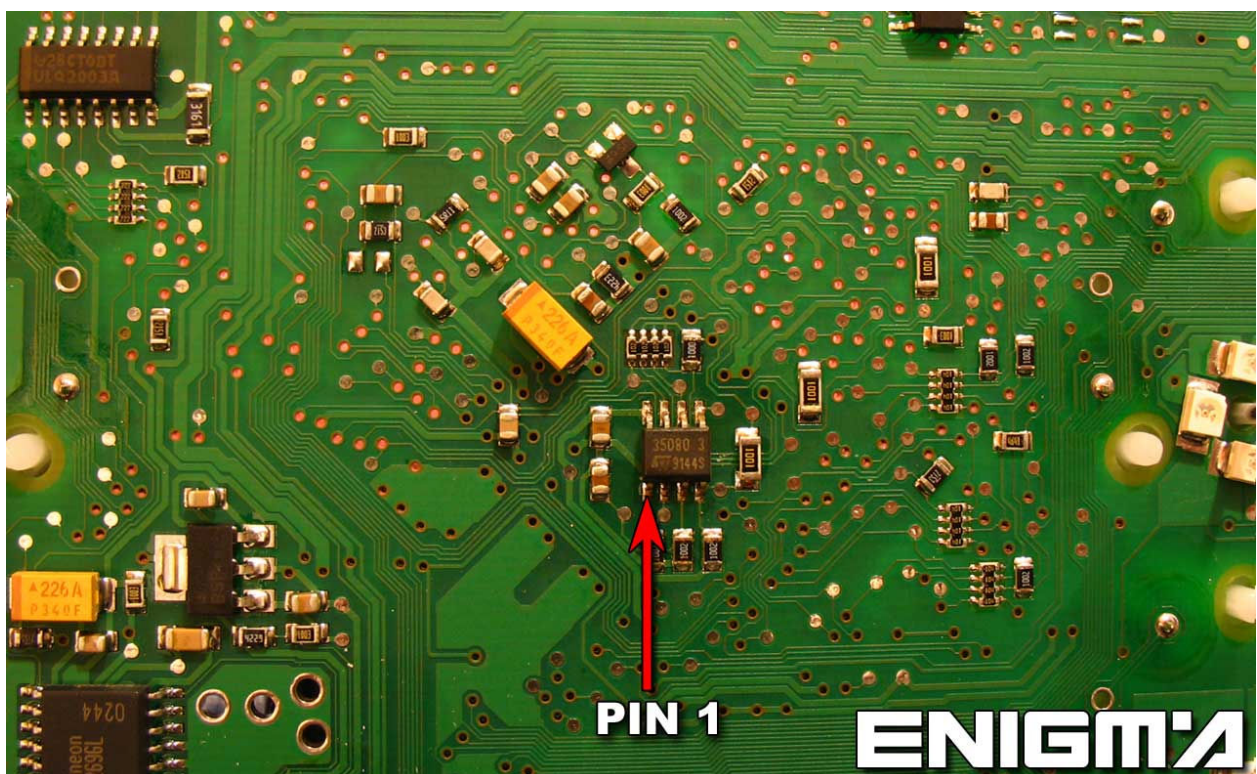


# BMW 3 SERIES E46 DASH BOSCH



**ENIGMA**

USE CABLE C4, OPEN ALL DASH, PLEASE MAKE IT CAREFULLY, THEN LOCATE EPROM MEMORY, AND CLIP IT CHECKING PIN 1 AS SHOWN OF PHOTO BELOW:



**PIN 1**

**ENIGMA**