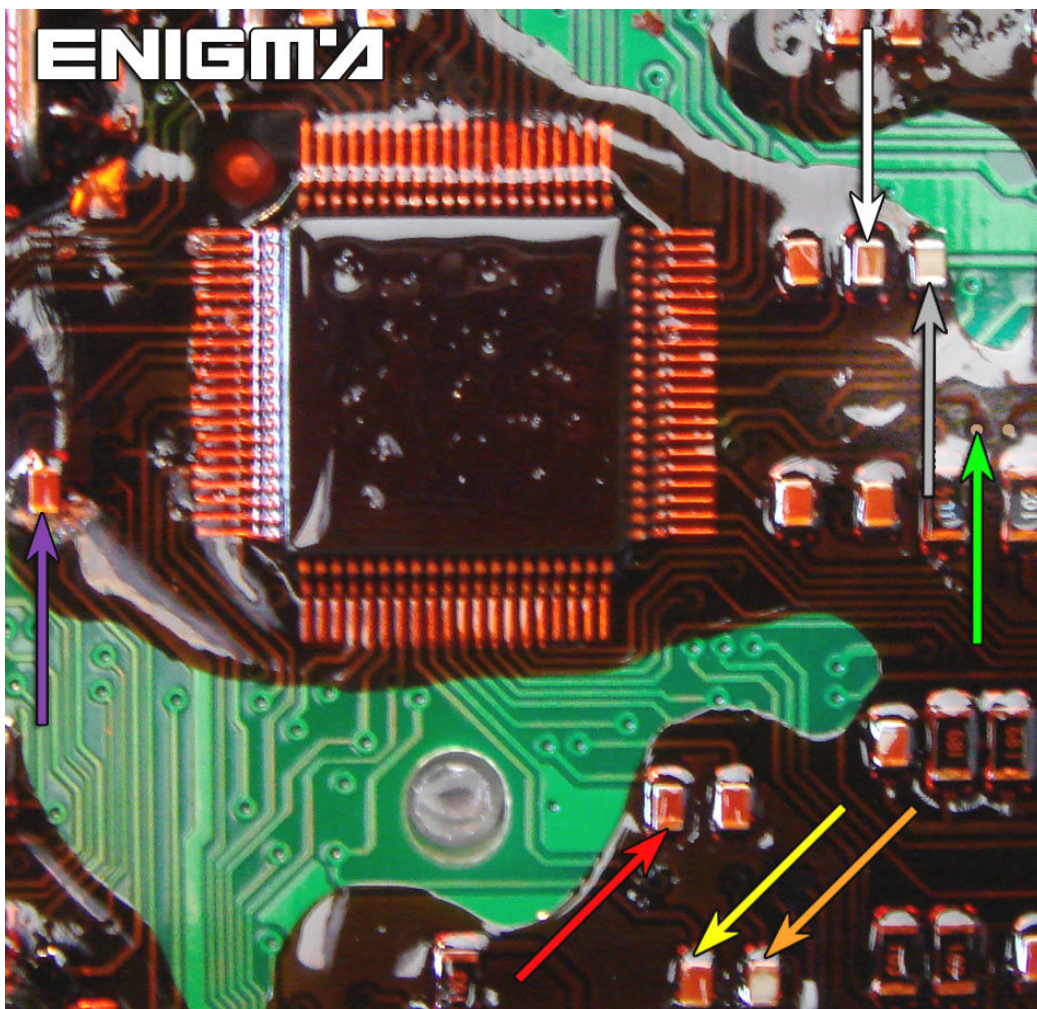


# BMW 5 SERIES E39 DASH SW17



USE C7 CABLE, WE ONLY NEED REMOVE BACK COVER FROM DASH, LOCATE POINTS IN THE MAIN BOARD LIKE IN PHOTO BELOW AND SOLDER CABLE LEADS AS IT SHOWS TO US. **NEVER** TOUCH NAILS, IT IS VERY DANGEROUS. MEMORY INSIDE THESE KINDS OF CARS IS A M35080.



TO MAKE A GOOD JOB REMEMBER TO **MODIFY LCM AND EWS**