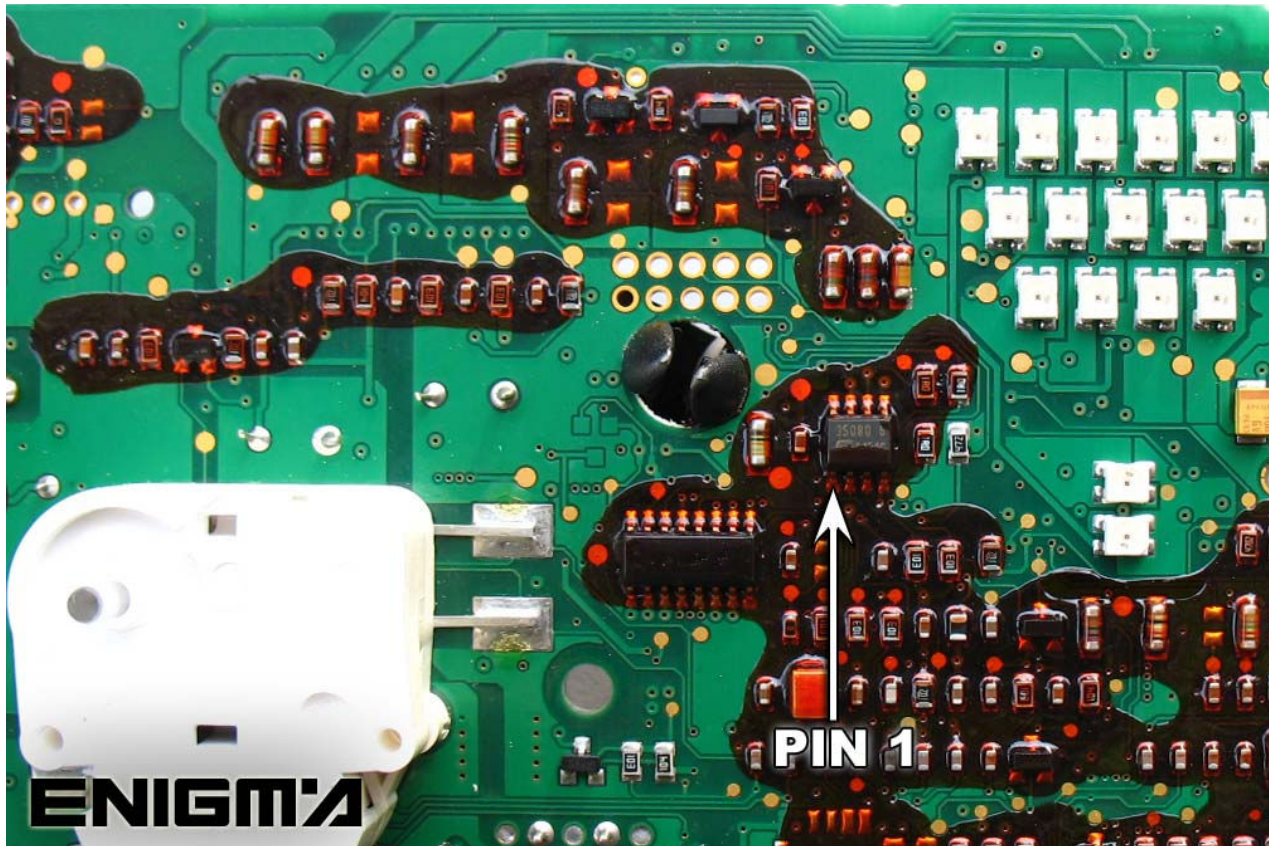


BMW 7 SERIES E65 DASH



TWO WAYS TO MODIFY THIS DASH:

1. USE CABLE C4, OPEN ALL DASH, PLEASE MAKE IT CAREFULLY, THEN LOCATE EPROM MEMORY, AND CLIP IT CHECKING PIN 1 AS SHOWS TO US BELOW PHOTOS:



2. Use C7 cable, WE ONLY NEED TO REMOVE BACK PLASTIC COVER OF DASH, LOCATE POINTS IN THE MAIN BOARD AND SOLDER CABLE LEADS AS SHOWS TO US BELOW PHOTO:

