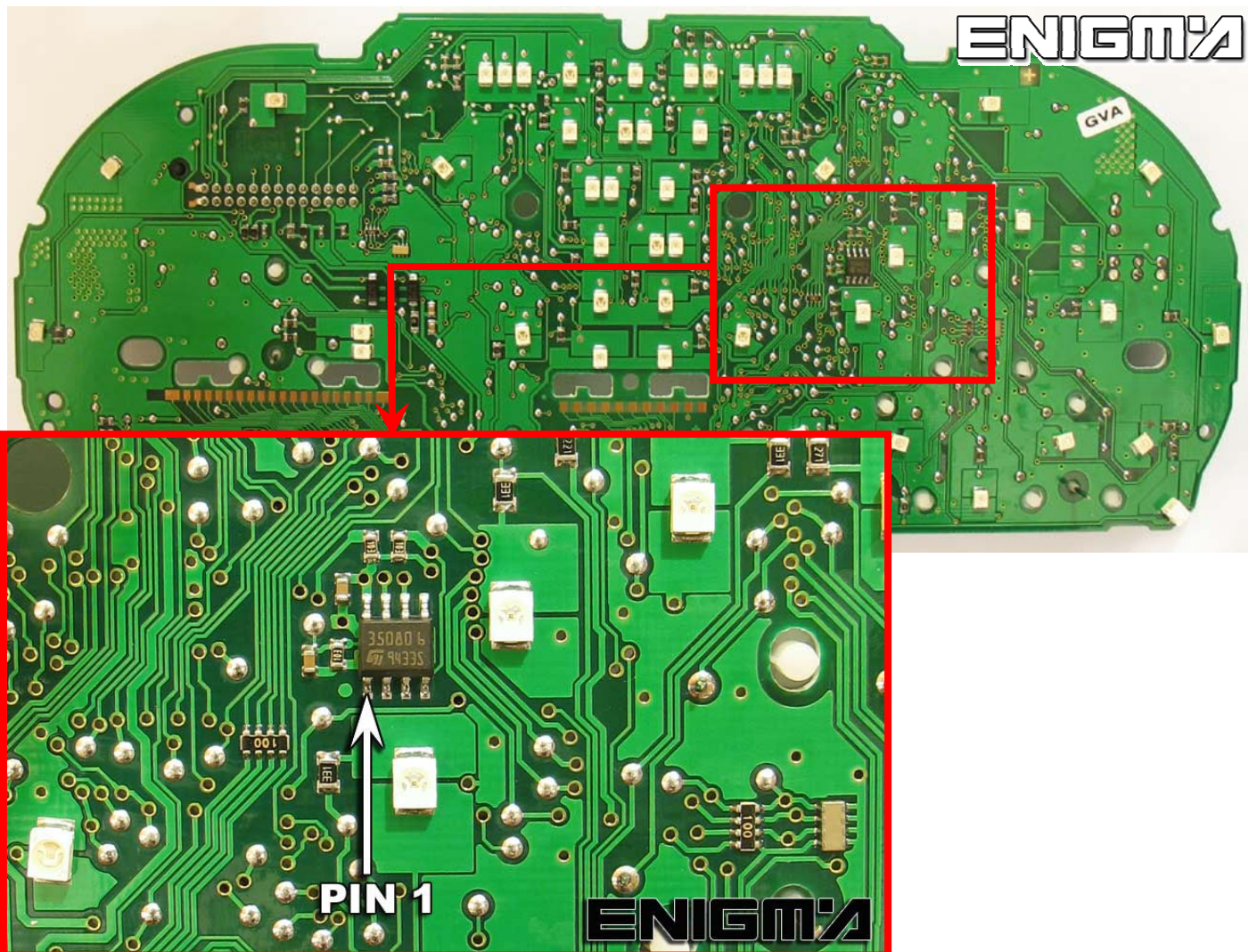


# BMW X3 DASH



USE CABLE C4, OPEN ALL DASH, PLEASE MAKE IT CAREFULLY, THEN LOCATE EPROM MEMORY M35080, WE DON'T NEED TO DESOLDER IT, AND CLIP IT CHECKING PIN 1 AS SHOWN OF PHOTO BELOW:



TO MAKE A GOOD JOB REMEMBER TO MODIFY LCM AND EWS