

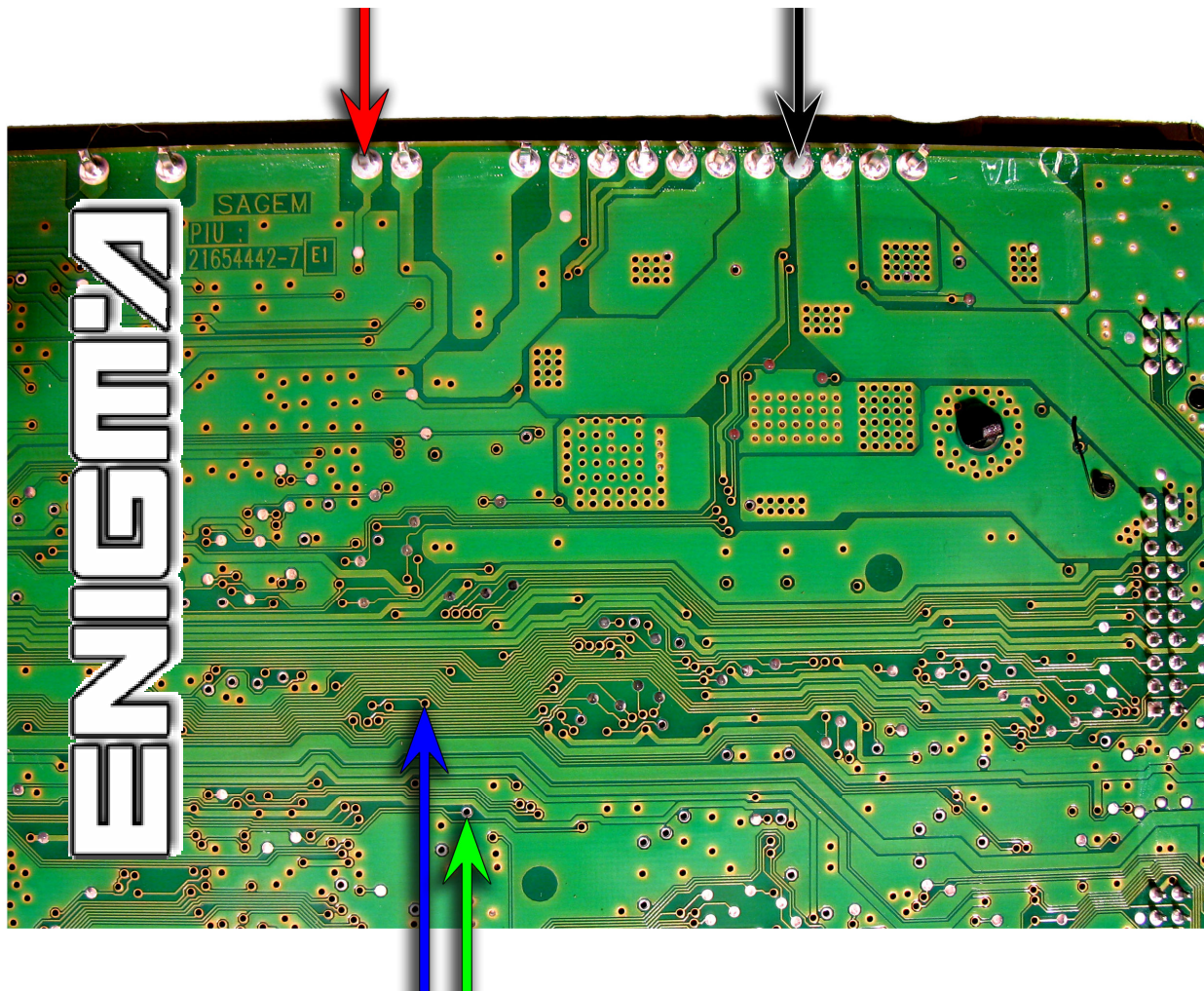
# CITROEN C5 BSI TO 2004



ENIGMA

LOCATION

USE CABLE C12 O HCS12,  
REMOVE BACK PLASTIC COVER FROM BSI, THEN CONNECT OR SOLDER CABLE LEADS  
ACCORDING TO COLOURS AS SHOWN OF BELOW PHOTO:



ENIGMA