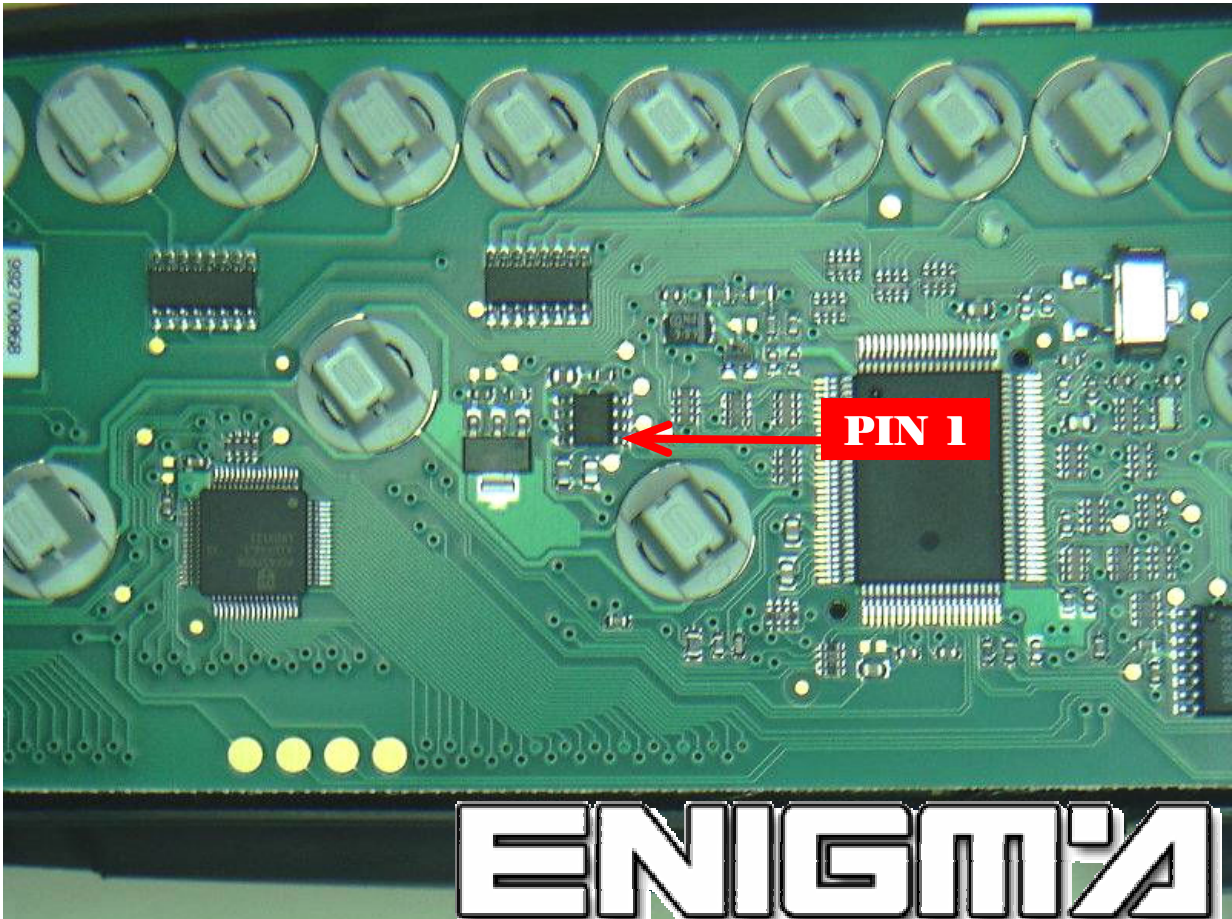


CITROEN PICASSO DASH FROM 2003



ENIGMA

USE CABLE C4, OPEN BACK PART OF DASH, CAREFULLY, DON'T TOUCH SCREENS AT ANY TIME, THEN LOCATE EPROM 93C66 MEMORY, AND CLIP IT CHECKING **PIN 1** AS SHOWN OF BELOW PHOTO:



ENIGMA