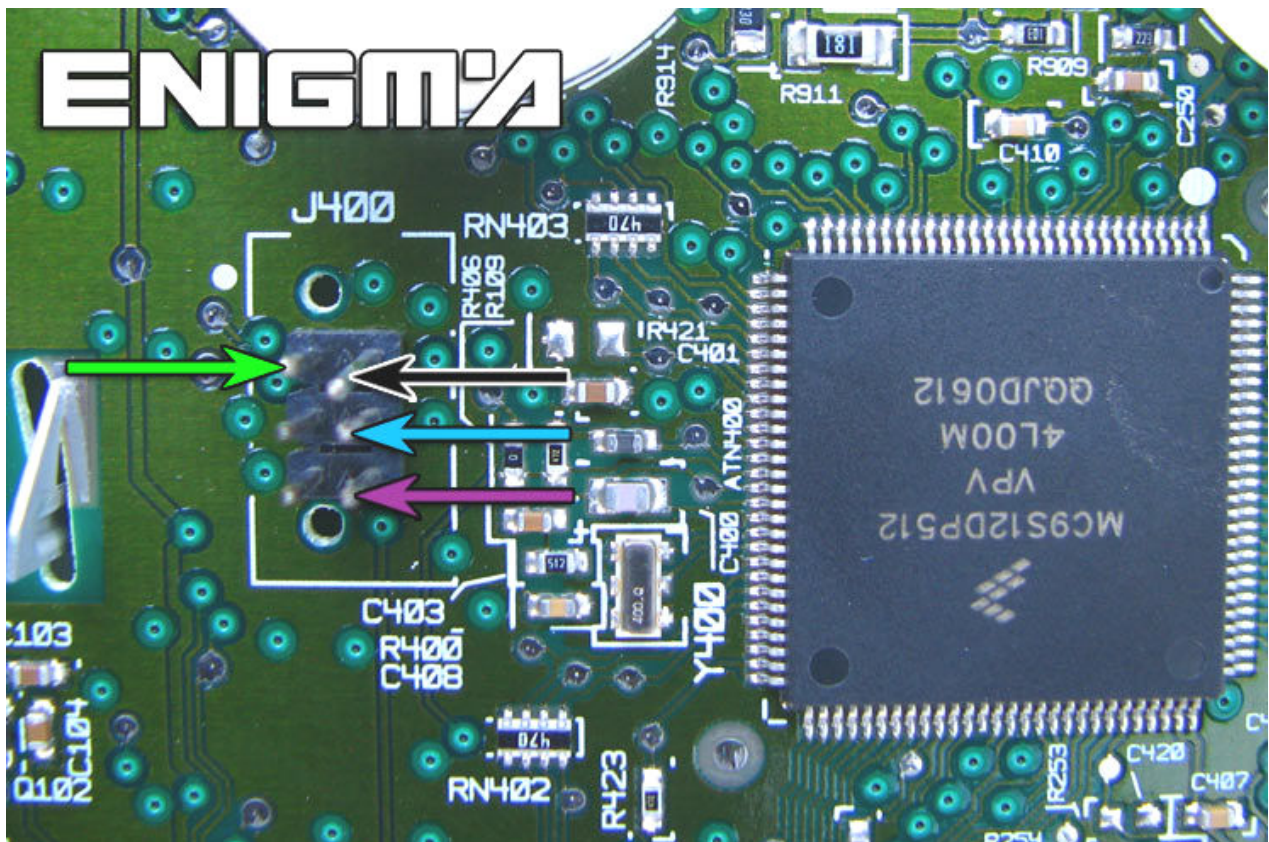


FORD GALAXY FROM 2006



USE CABLE C12 - HCS12, OPEN ALL DASH, PLEASE MAKE IT CAREFULLY, THEN SOLDER CABLE LEADS ACCORDING TO COLOURS AS SHOWN ON THE PHOTO BELOW:



ALSO WE CAN USE SPECIFIC CABLE C43, LIKE YOU CAN SEE ON NEXT PHOTO:

