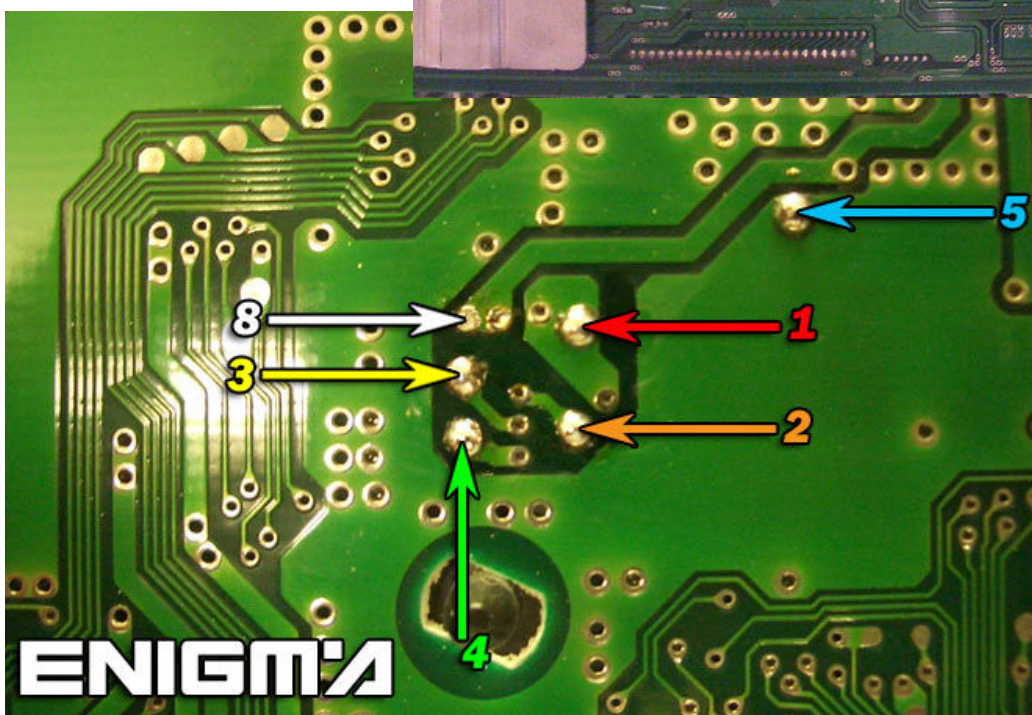
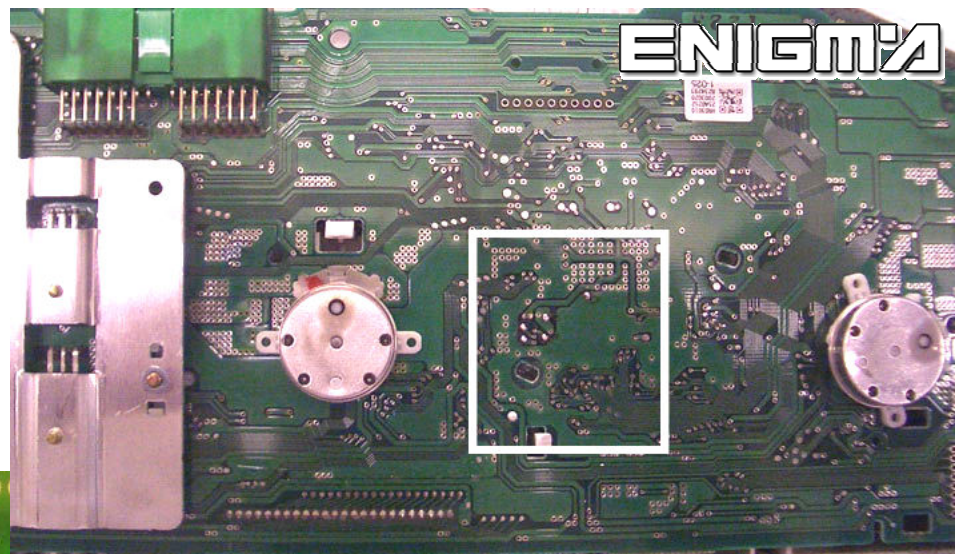


HONDA ACCORD FROM 2003



USE CABLE C7, OPEN BACK DASH COVER, THEN LOCATE POINTS ON THE MAIN BOARD LIKE IN PHOTO BELOW AND SOLDER CABLE LEADS AS IT SHOWS TO US:



WE CAN USE CABLE C4, OPEN ALL DASH CAREFULLY, THEN LOCATE EEPROM 93C66 OR L56 MEMORY, AND CLIP IT CHECKING PIN 1 AS SHOWN OF BELOW PHOTO:

