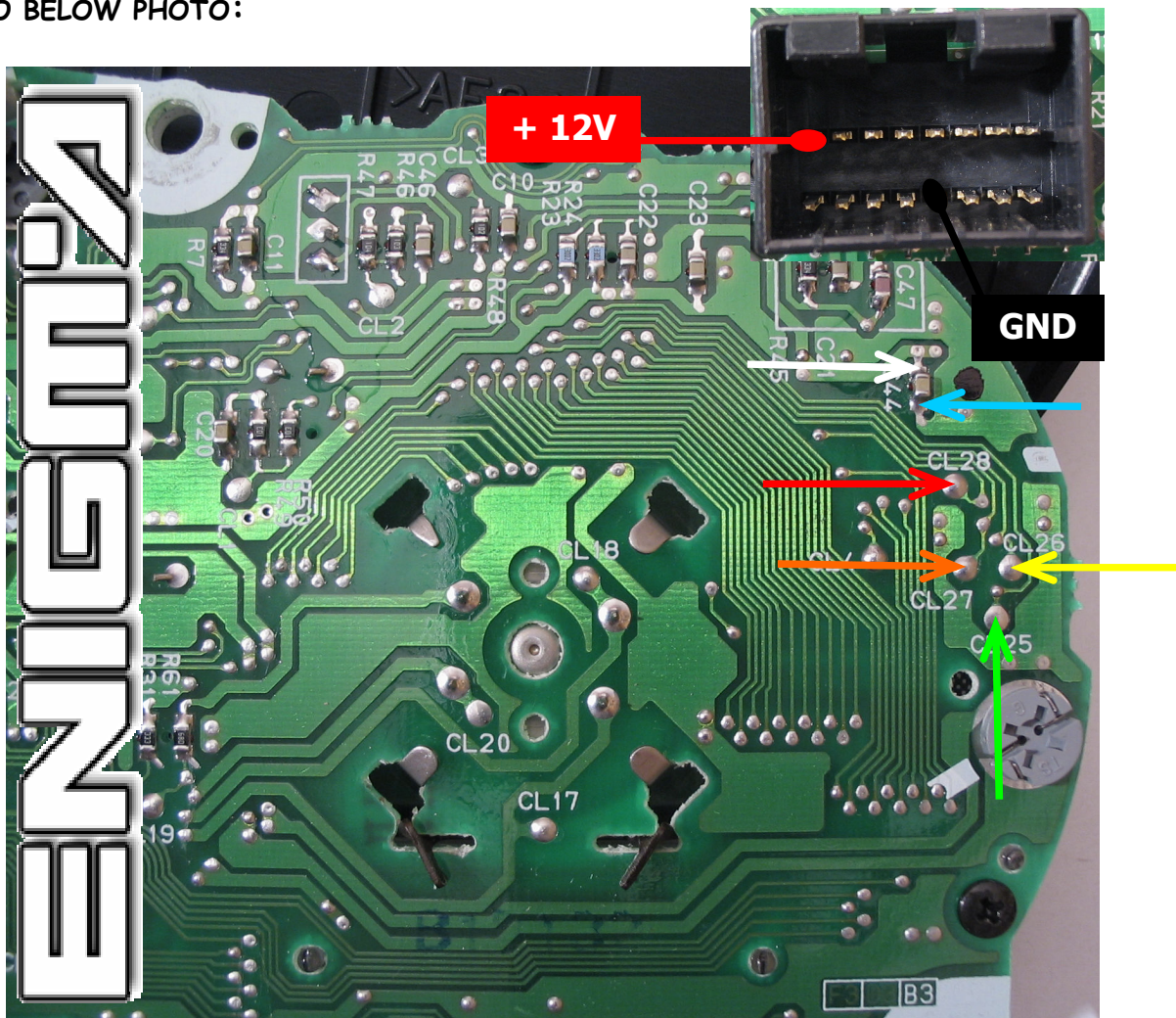


# KAWASAKI ZX6 2000-2003

## ENIGMA



USE CABLE C7, REMOVE BACK PLASTIC COVER FROM DASH, THEN LOCATE EEPROM POINTS, AND SOLDER CABLE LEADS CHECKING NUMBERS AND COLOURS AS SHOWN INTO BELOW PHOTO:



## ENIGMA