

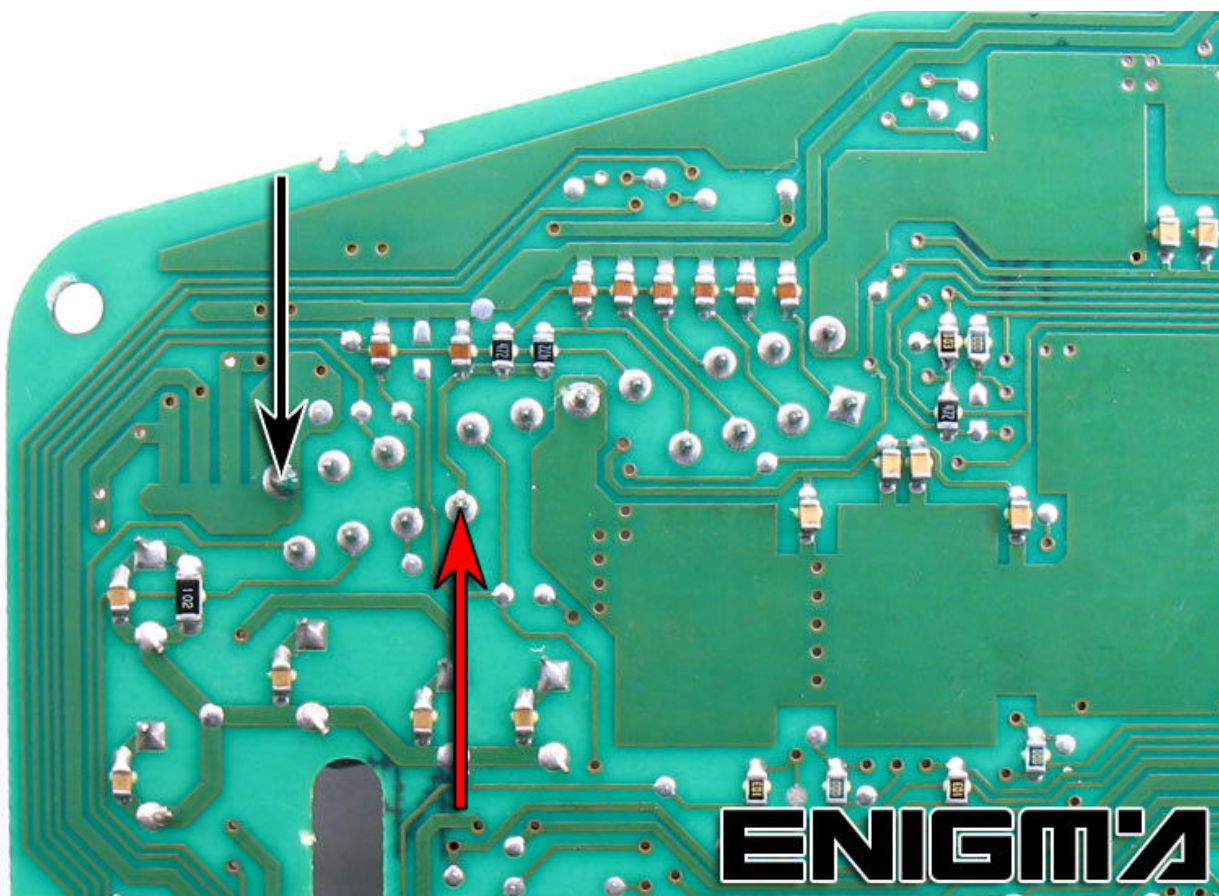
LANCIA LYBRA



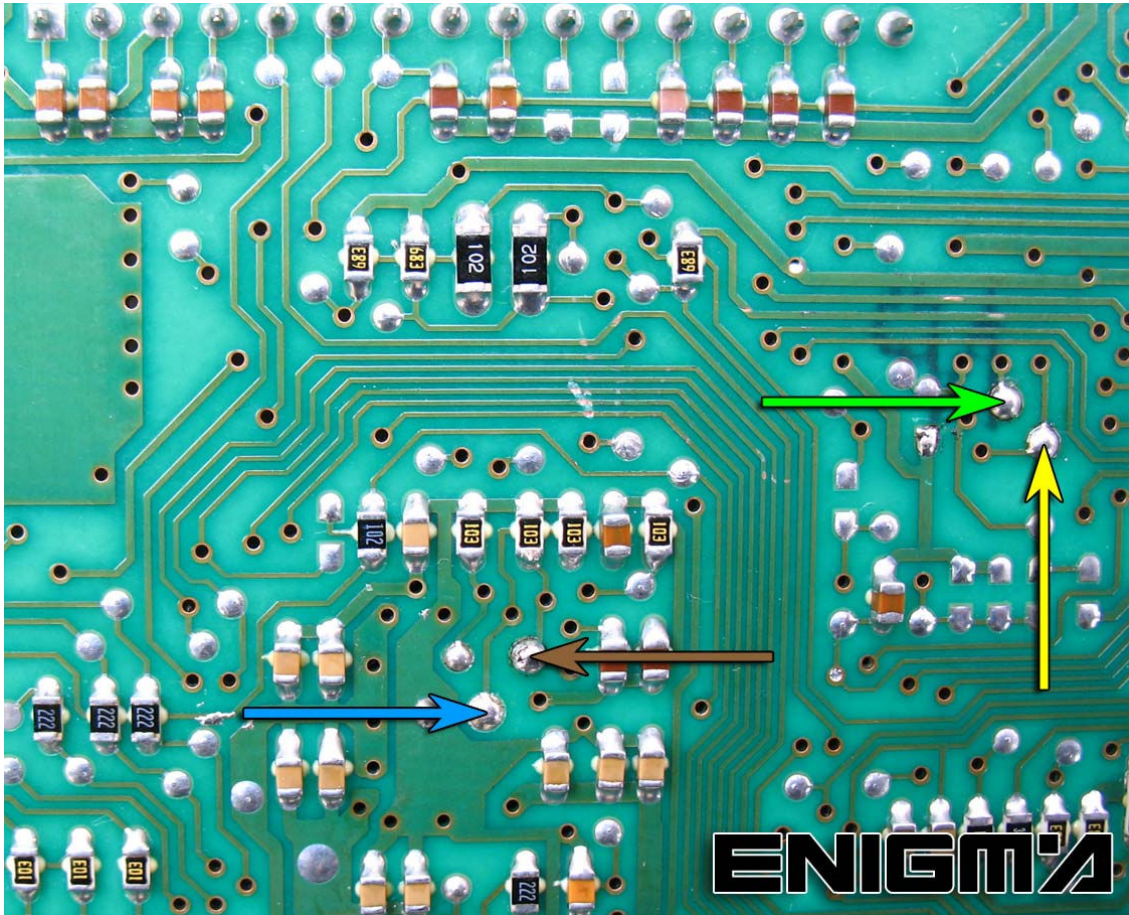
USE CABLE C11, REMOVE BACK PLASTIC COVER FROM DASH AND CHECKING DIFFERENT VERSIONS OF BOARD:

VERSION 1:

SOLDER POWER CABLES LIKE WE CAN SEE ON NEXT PHOTO:

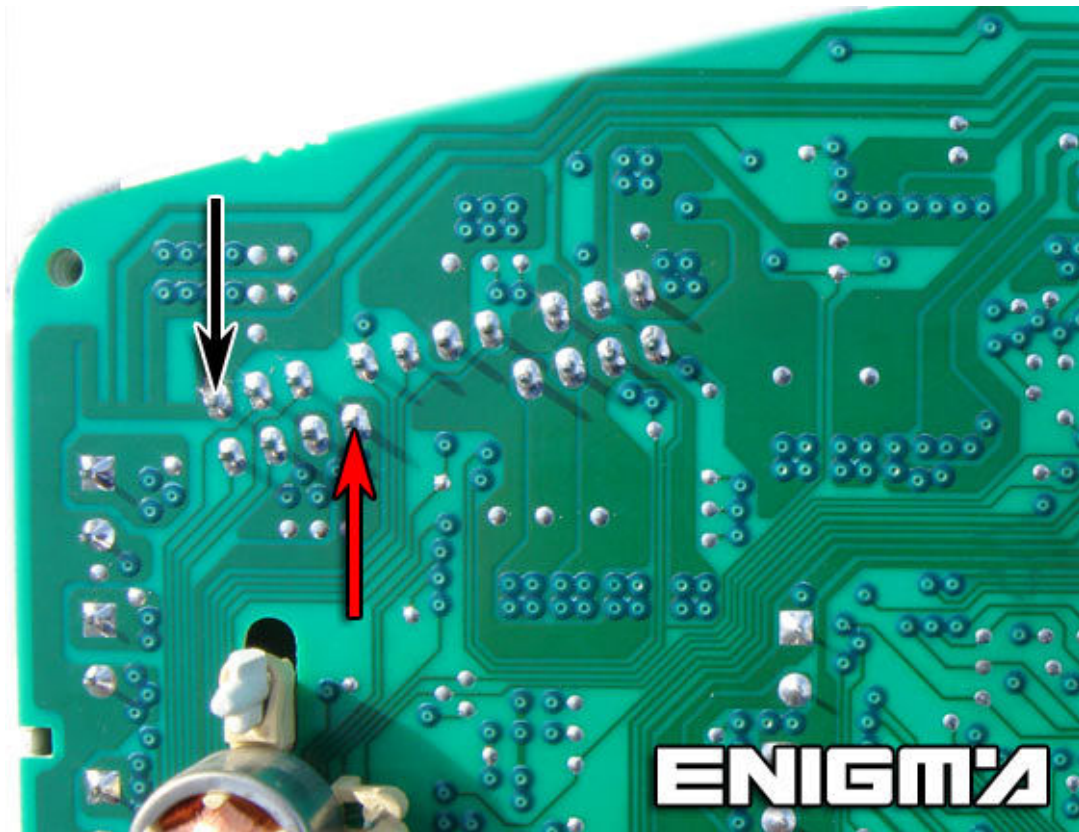


NOW WE MUST CONNECT OR SOLDER CABLE LEADS ACCORDING TO COLOURS AS SHOWN ON PHOTO BELOW:



VERSION 2:

SOLDER POWER CABLES LIKE WE CAN SEE ON NEXT PHOTO:



NOW WE MUST CONNECT OR SOLDER CABLE LEADS ACCORDING TO COLOURS AS SHOWN ON PHOTO BELOW:

