

MERCEDES BENZ B-W245 EZS

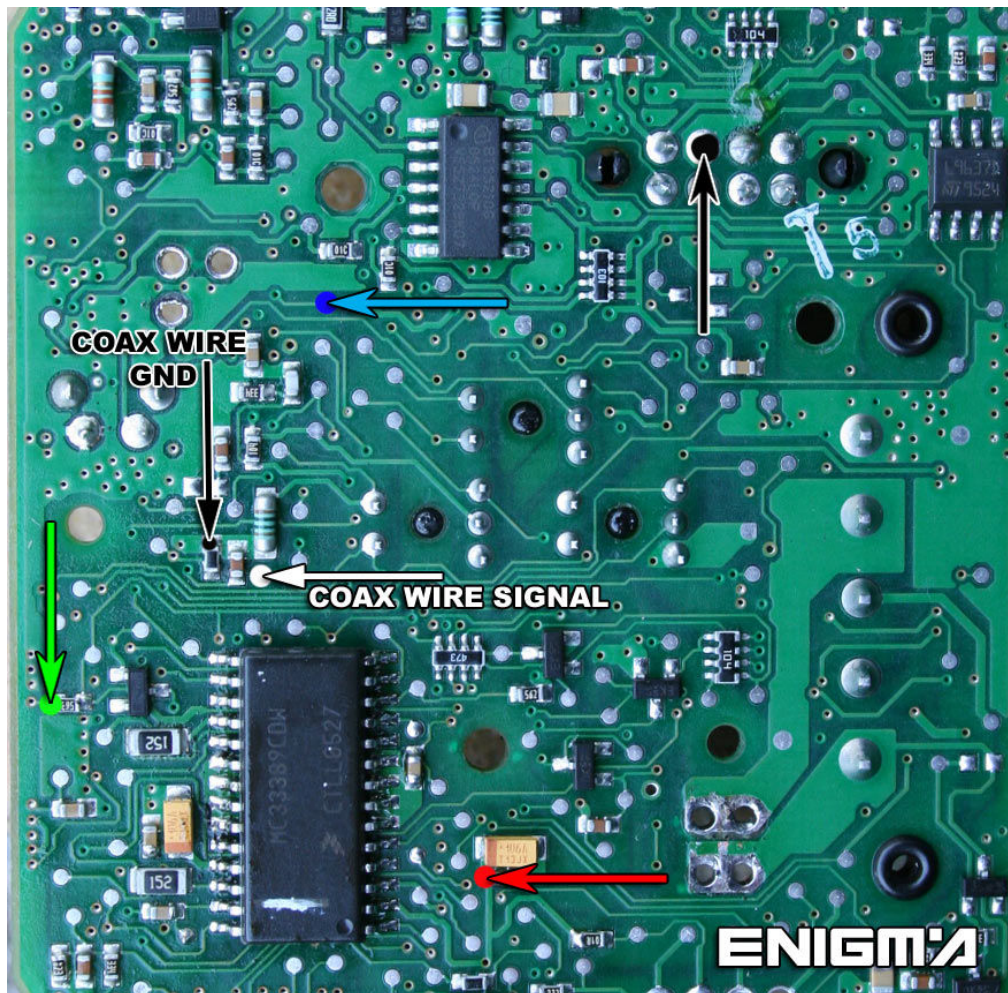
FIRST OF ALL READ KEY DATA BY OBD!!! IT IS NECESSARY

USE CABLE **C45 + A6 ADAPTER**. REMOVE MODULE FROM CAR CAREFULLY:



NOW REMOVE BACK PLASTIC COVER FROM **EZS**, AND LOCATE POINTS ON THE BOARD CHECKING PHOTOS BELOWS AND SOLDER CABLE LEADS AS IT SHOWS TO US:

VERSION 1:



VERSION 2:

