

# MERCEDES BENZ CLK-W209 ZGS

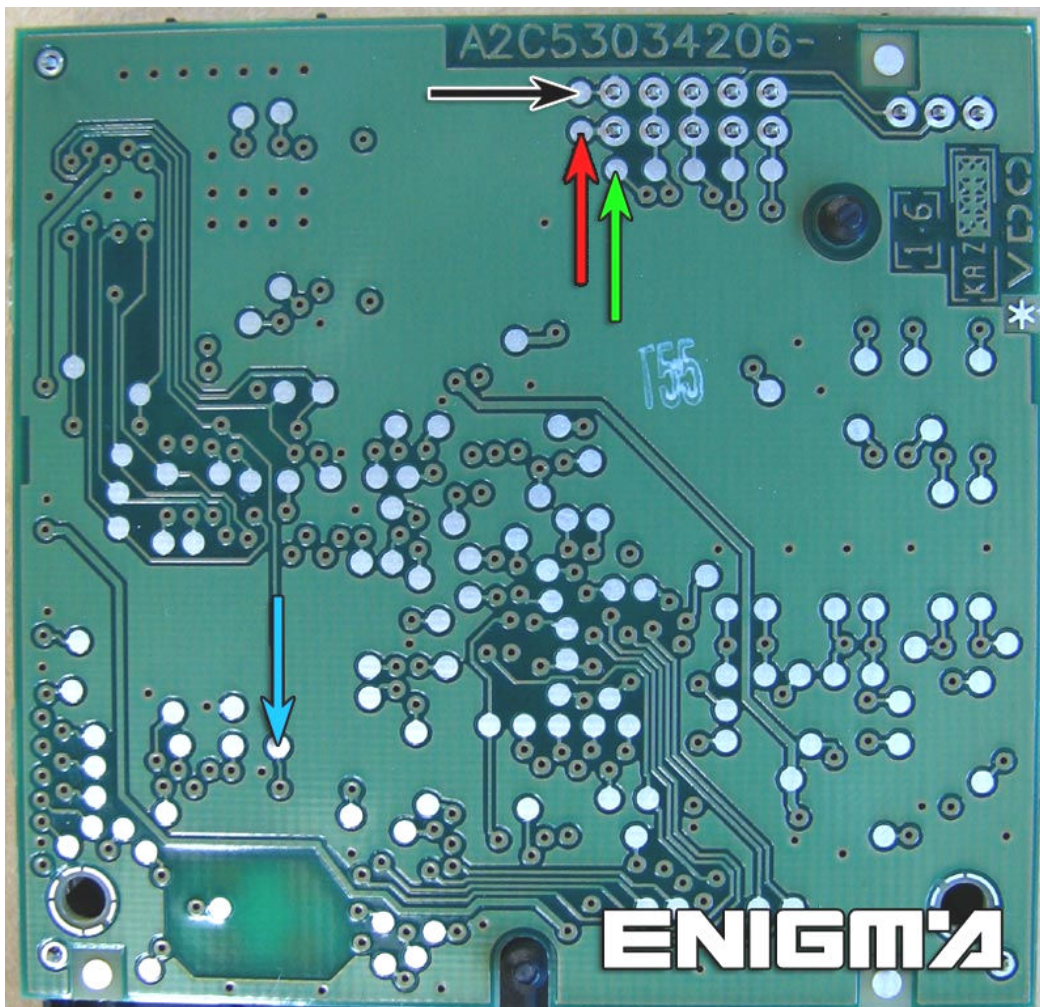
USE CABLE C12. REMOVE FROM CAR THIS MODULE CAREFULLY AND OPEN IT.



**LOCATION**

**ENIGMA**

NEXT SOLDER CABLE LEADS ACCORDING TO COLOURS AS SHOWN ON PHOTO BELOW:



**ENIGMA**