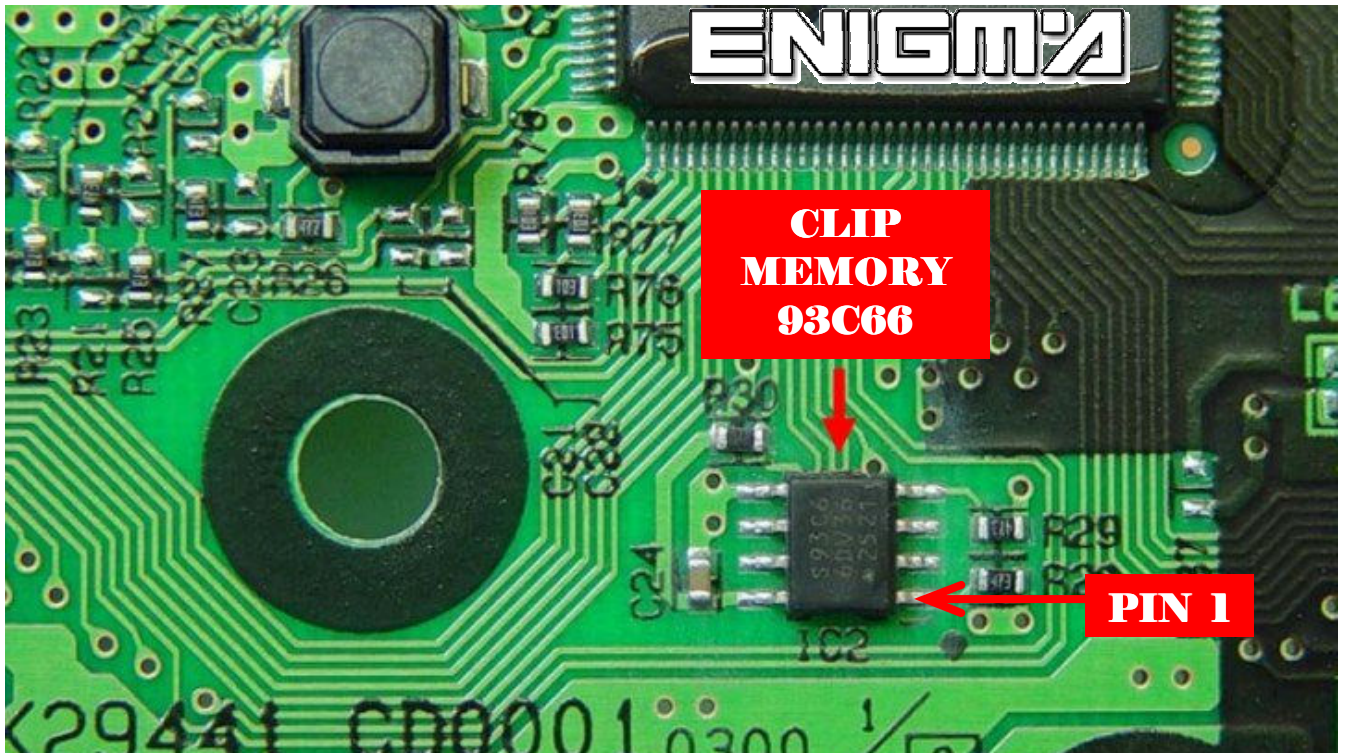


# NISSAN 350Z

USE CABLE C4, OPEN ALL DASH, BUT WE MUST TAKE MUCH CAREFULLY, WE MUST TAKE OFF NAILS, THEN LOCATE EPROM 93C66 OR S330 MEMORY, AND CLIP IT CHECKING PIN 1 AS SHOWN OF BELOW PHOTO:



ALTHOUGH WE CAN USE METHOD LIKE IN ALL NISSAN SOLDERING POINTS BY BACK, HERE YOU HAVE RIGHT CONNECTION FOR LEADS USING CABLE C7:

