

# PEUGEOT PARTNER DASH FROM 2002

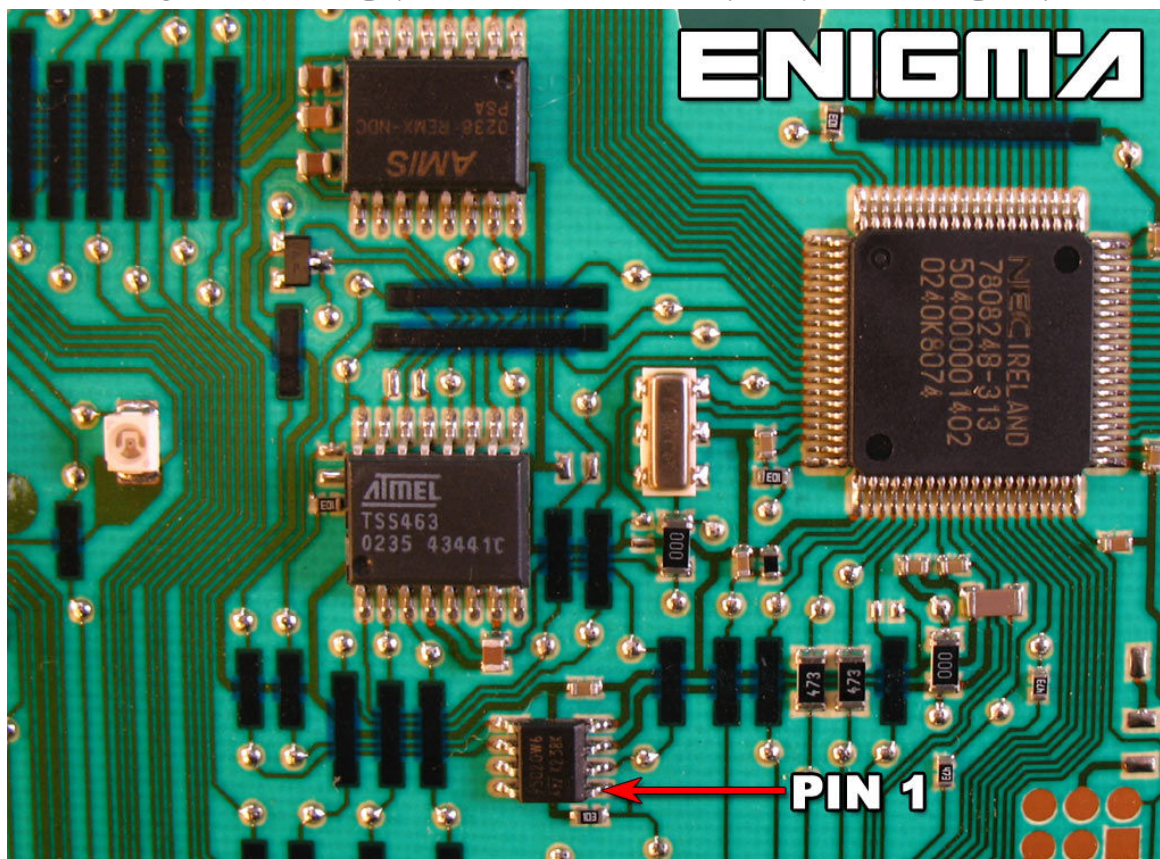


# ENIGMA



USE CABLE C4, OPEN ALL DASH, PLEASE MAKE IT CAREFULLY, ENGINES ARE VERY FRAGILE WHEN YOU TRY TO REMOVE NAILS. THEN LOCATE EPROM MEMORY 95020, USUALLY WE DON'T NEED TO DESOLDER IT.

AND CLIP IT CHECKING **PIN 1** AS SHOWN OF PHOTO BELOW:



# ENIGMA

**PIN 1**