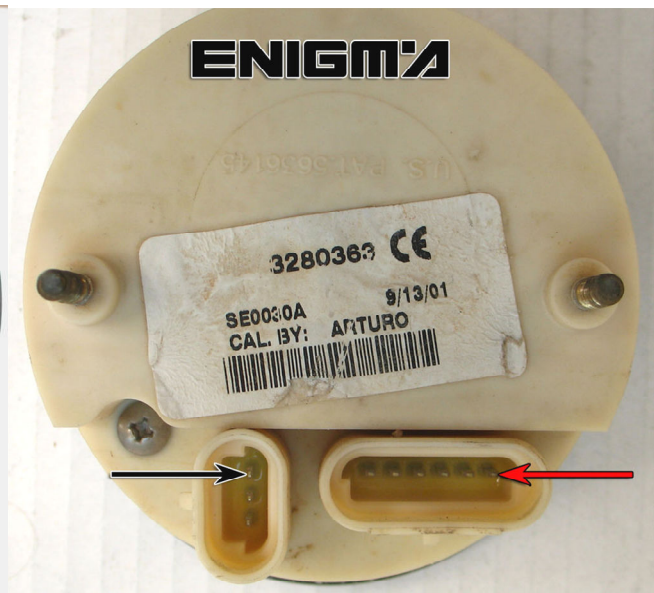
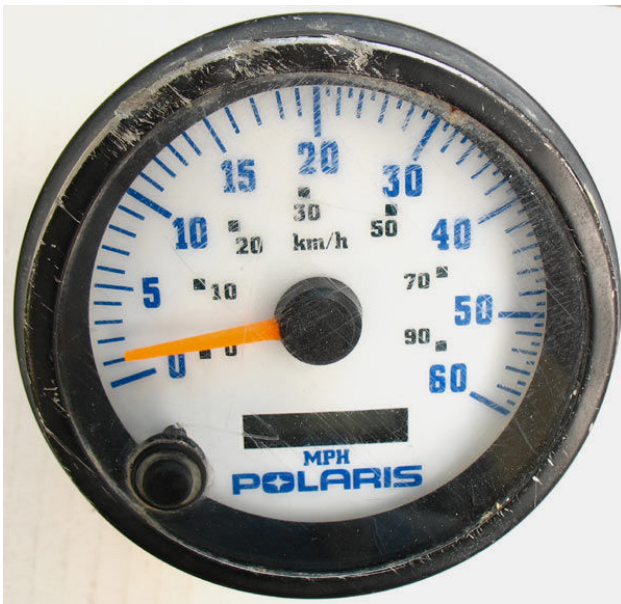


POLARIS SCRAMBLER 500



USE CABLE C4, TAKE OFF DASH FROM QUAD, OPEN ALL DASH, PLEASE MAKE IT CAREFULLY. WE MUST REMOVE 3 SCREWS UNDER STICKER. WHEN WE HAVE MAIN BOARD ON OUR HANDS LOCATE EPROM 93C46 MEMORY, AND CLIP IT CHECKING PIN 1 AS SHOWN OF PHOTO BELOW:

WE MUST MODIFY MILEAGE AND HOURS

