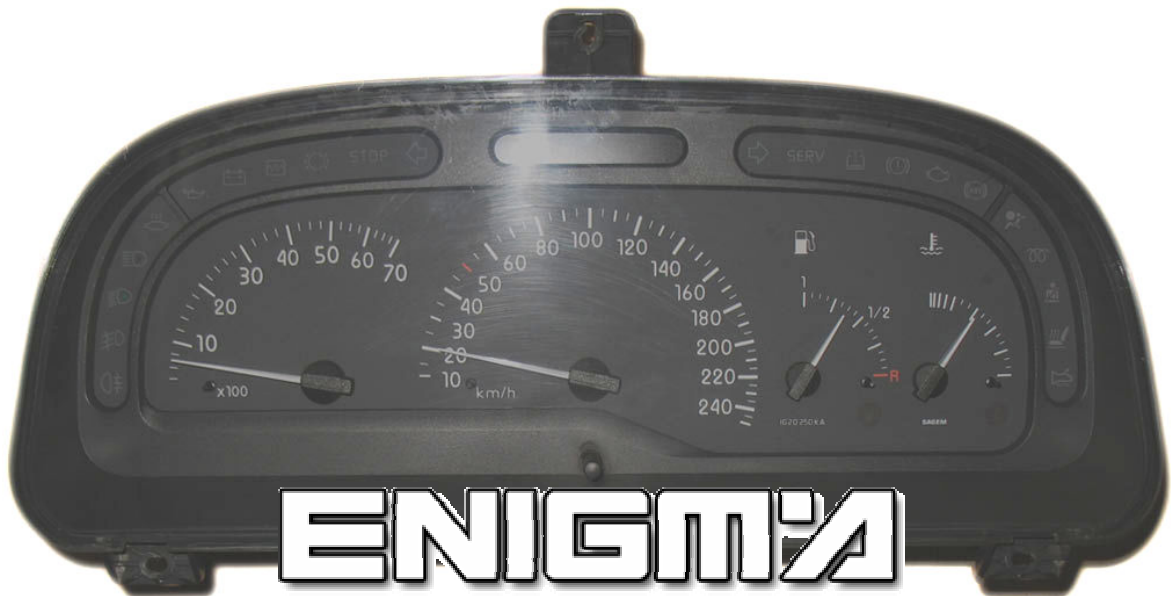
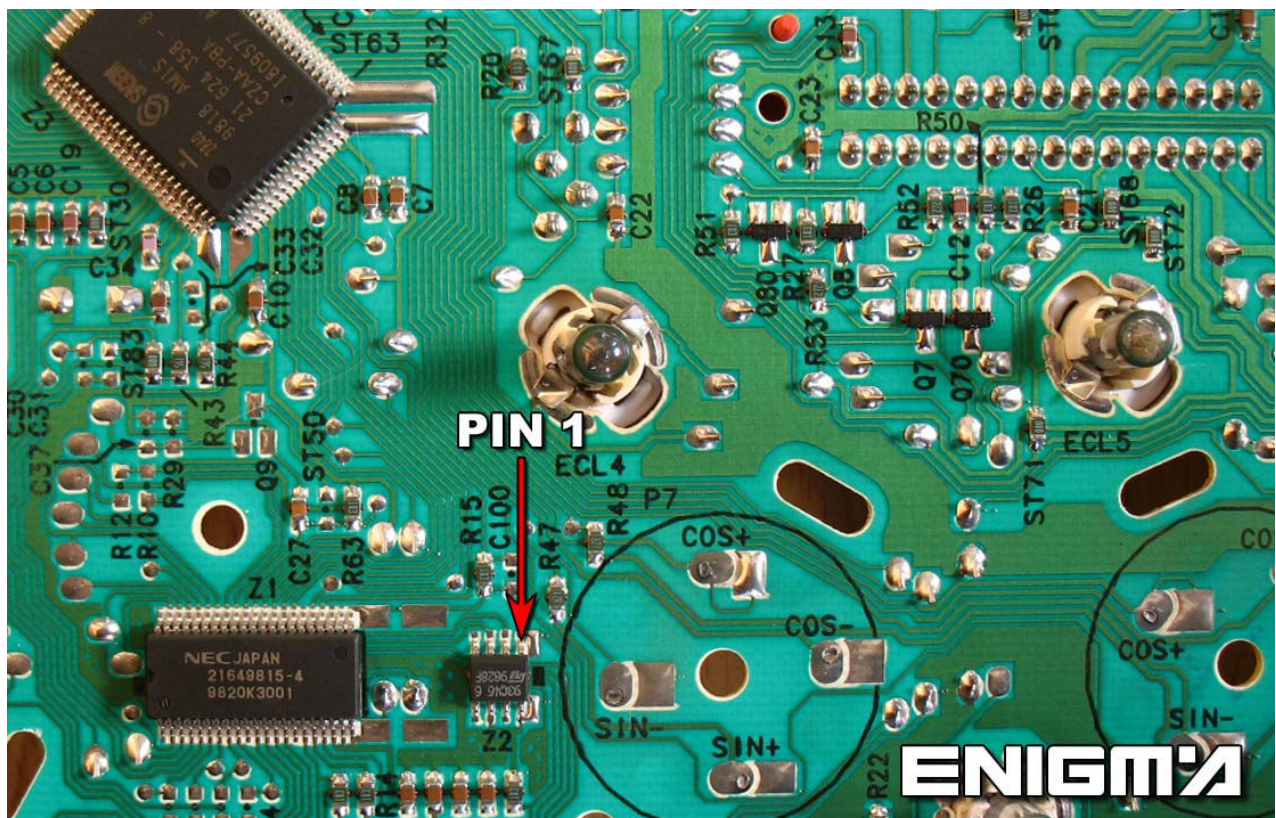


RENAULT LAGUNA SAGEM 1998-2001



USE CABLE C4, OPEN BACK PLASTIC COVER OF DASH. THEN CAREFULLY REMOVE ENGINES, THESE ARE SOME PLASTIC CLIPS THAN JUST NEED TO PRESS, YOU DON'T NEED TOUCH NAILS. THEN YOU NEED TO TAKE OFF SCREEN CONECTION, AND FINALLY BOARD IS FREE, LOCATE EPROM IN FRONT OF THIS BOARD AND CLIP IT CHECKING PIN 1 AS SHOWN OF BELOW PHOTO:



BE SPECIAL CAREFULLY WITH A GUM THAT IS BASE FROM RESET BUTTOM.
IT IS BETTER IN THIS CAR CLIP THE QUARTZ TOO