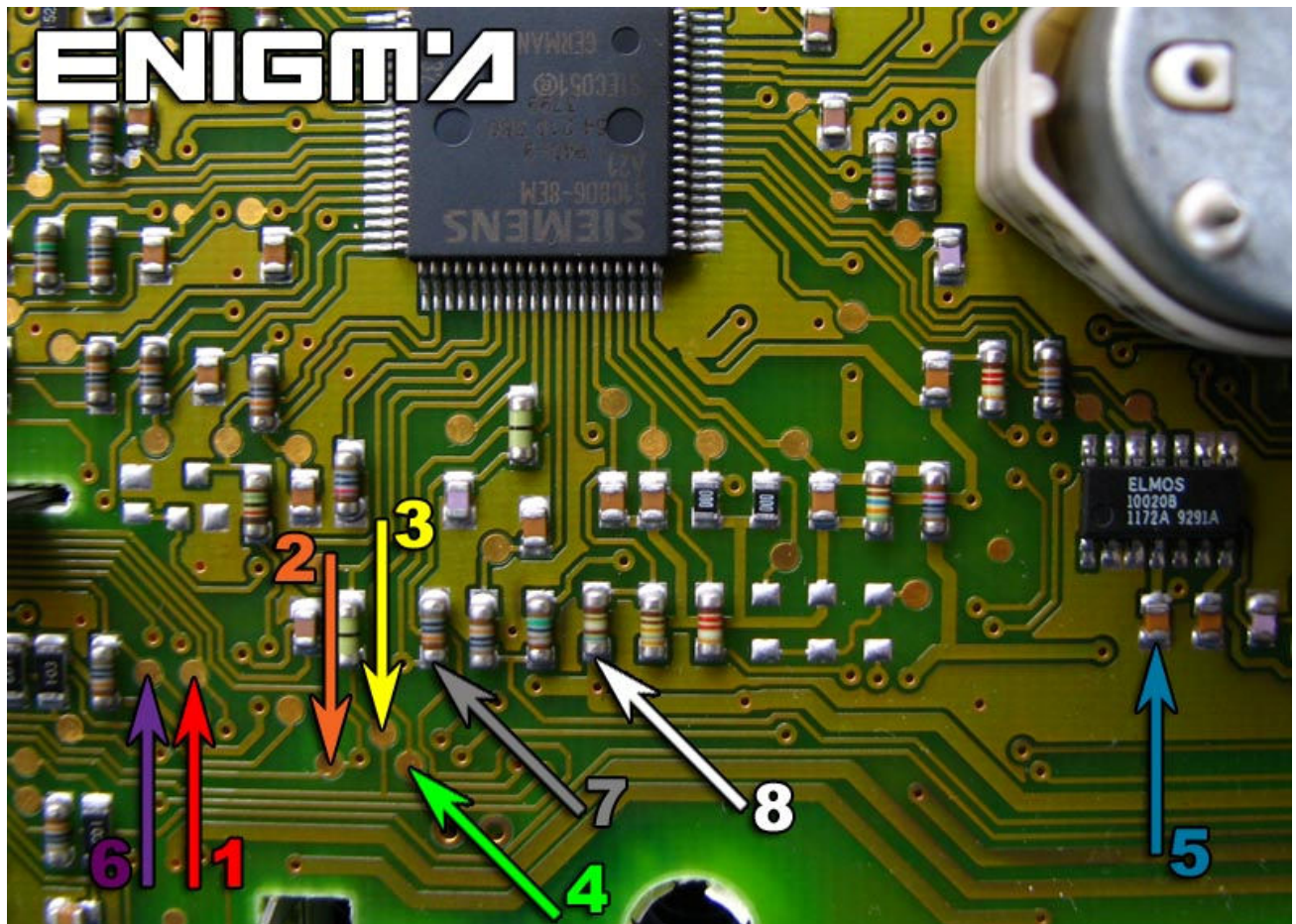


ROVER 75 DASH



USE C7 CABLE, OPEN BACK PLASTIC COVER, NOW LOCATE POINTS IN THE MAIN BOARD LIKE IN PHOTO BELOW AND SOLDER CABLE LEADS AS IT SHOWS TO US:
USUALLY OLD VALUE WILL NOT BE RECOGNIZED, ALTHOUGH NEW VALUE WILL SHOWN AFTER RECALIBRATION!!!



TO MAKE A GOOD JOB REMEMBER TO MODIFY LCM AND EWS